

MICRO SWITCH

A DIVISION OF MILWAUKEE-HONEYWELL REGULATOR COMPANY
 FREEPORT, ILLINOIS

FED. MFR. CODE 91929

SWITCH-BASIC

CATALOG LISTING

4HS15

(M) 4HS15
 ISSUE 2

4HS15

PAGE 1 OF 1

M

DRAWING NUMBER

10

ISSUE

10

REPLACES

RELEASE NO.

11 JAN. 56

CNT

CHECK

11 JAN. 56

CHECK

16 JAN. 56

CHECK

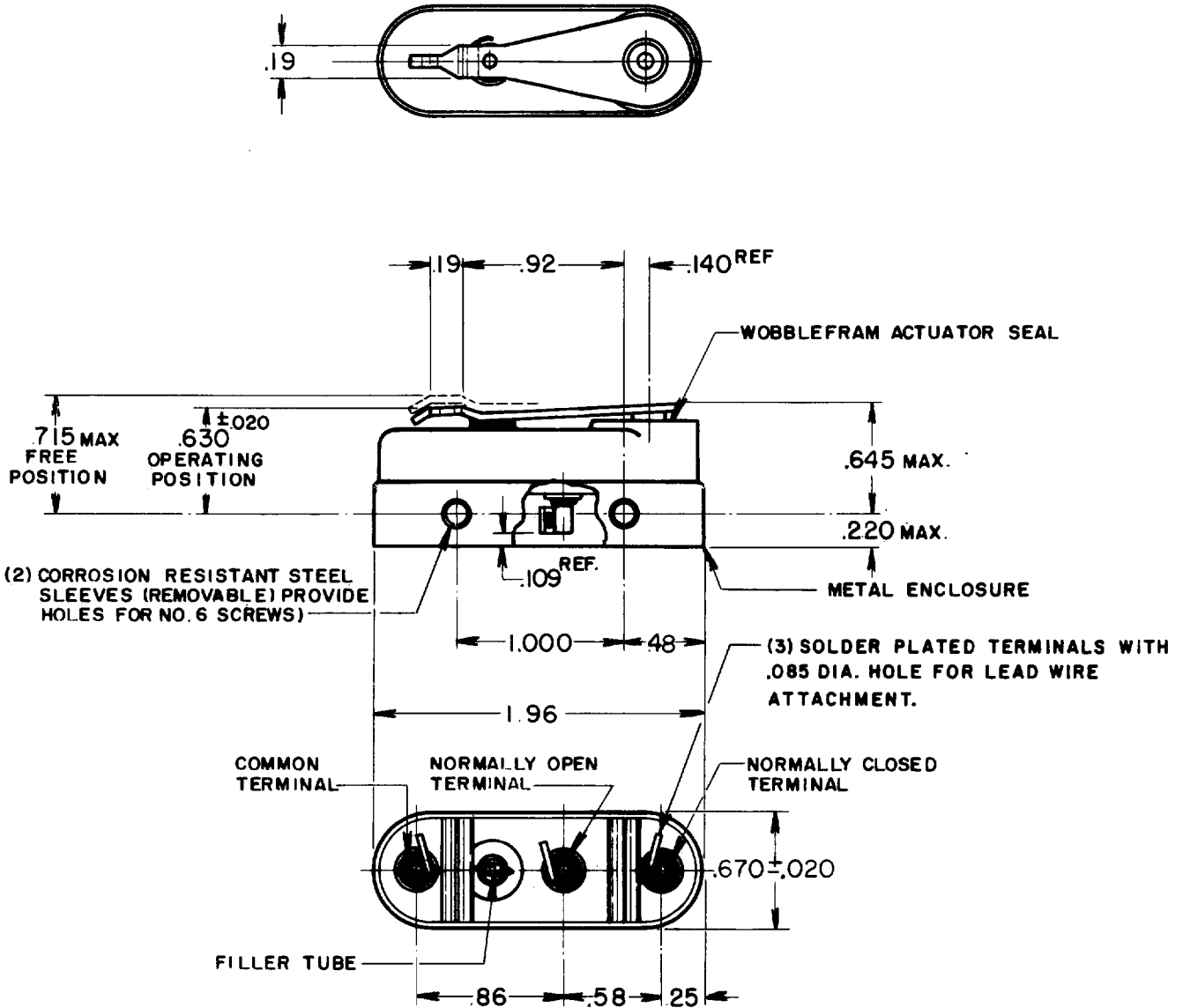
4, JAN. 56

REVISIONS

A	CO9600	R. G. C.	4 DEC. 55
B	CO10341	R. G. C.	29 MAR. 56
C	CO10872	K. A. F.	10 AUG. 56
D	CO15761	OMW	3 MAY 57
E	CO-55162B	K. E. W.	9 OCT. 84
F	CO61043	TSK	26 AUG. 88
G	CO72580	DAW	20 AUG. 92
H	CO-94122	TSM	12 MAR. 99

74-96
 FORMTEK

DRAWN



NOTE-

- 1-CUSTOMER TO ATTACH LEADS AND PROVIDE EMBEDMENT
- 2-FOR USE IN AMBIENT TEMPERATURE RANGE FROM MINUS 65° F TO PLUS 250° F

THIS DRAWING COVERS A PROPRIETARY ITEM, AND IS THE PROPERTY OF MICRO SWITCH, A DIVISION OF HONEYWELL. THIS DRAWING IS NOT TO BE COPIED OR USED WITHOUT THE APPROVAL OF MICRO SWITCH.

CHARACTERISTICS	ELECTRICAL DATA			SCALE FULL
OPERATING FORCE-----18 - 32 OZ.	CONTACT ARRANGEMENT		BREAK DISTANCE	DO NOT SCALE PRINT
RELEASE TRAVEL-----.015 MIN.	S. P. D. T.			UNLESS OTHERWISE SPECIFIED DIMENSIONS ARE IN INCHES TOLERANCES ARE: ONE PLACE (.0) ±.030 TWO PLACE (.00) ±.015 THREE PLACE (.000) ±.008 ANGLES ±
RELEASE FORCE-----4 OZ. MIN.	LINE VOLTAGE	INDUCTIVE LOAD	RESISTIVE LOAD	
PRETRAVEL-----.085 MAX.	28 VDC	8 AMP	25 AMP	
DIFFERENTIAL TRAVEL-----.020 MAX.	(SEA LEVEL - 100,000 FT)			
OVERTRAVEL-----.020 MIN.	125 VAC	1 AMP	.5 AMP	
	(SEA LEVEL - 70,000 FT)			WEIGHT 1.2 OZ MAX