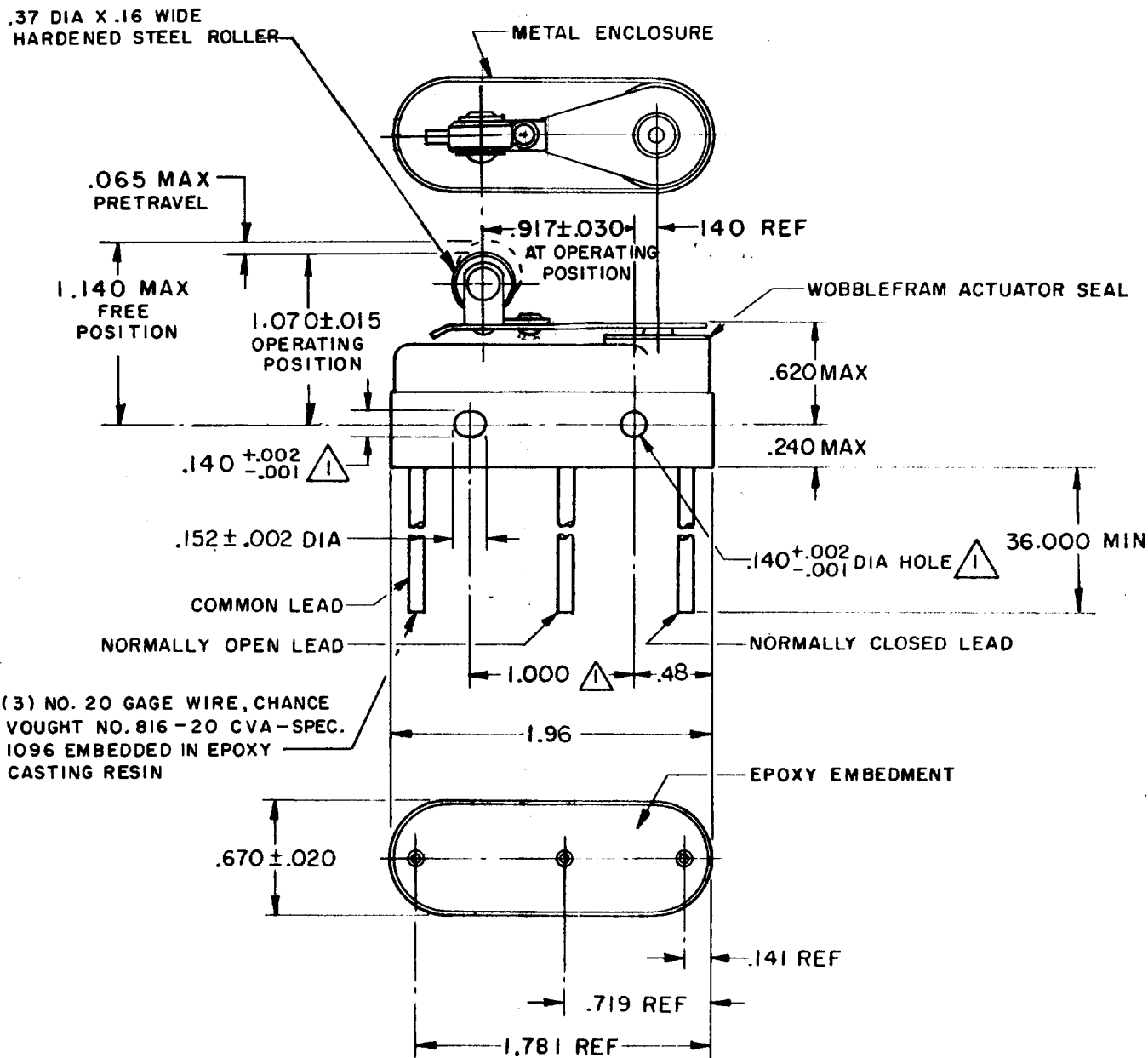


4HS26
 PAGE 1 OF 1
 M
 DRAWING NUMBER
 X
 ISSUE
 X
 11
 REVISIONS
 A CO17633
 M B F
 11 FEB 63
 B CO55162
 M A M
 10 DEC 85
 C CO61043
 T S K
 29 AUG 88
 D CO71281
 D A W
 22 OCT 91
 E CO-94122
 T S M
 12 MAR 99
 CHECK
 DAW 17, MAR '63
 CHECK
 DAW 11 FEB 63
 DRAWN
 M B F
 FO-50378
 FORMTEK



- NOTE -
- 1 MOUNTING HOLES WILL ACCEPT PINS OR SCREWS OF .139 MAX DIA ON 1.000 ± .002 CENTERS
 - 2 LEADS APPROPRIATELY MARKED FOR CIRCUIT IDENTIFICATION PER MIL-W-5088 AND CVA 127 B
 - 3 FOR USE IN AMBIENT TEMPERATURE RANGE FROM -65° TO +250° F
 - 4 WEIGHT OF SWITCH ONLY IS 1.7 OZ MAX WEIGHT OF CONDUCTOR GROUP ONLY IS 0.5 OZ MAX PER FOOT

THIS DRAWING COVERS A PROPRIETARY ITEM AND IS THE PROPERTY OF MICRO SWITCH, A DIVISION OF MINNEAPOLIS-HONEYWELL REGULATOR CO. THIS DRAWING IS NOT TO BE COPIED OR USED WITHOUT THE APPROVAL OF MICRO SWITCH.

CHARACTERISTICS	ELECTRICAL DATA			SCALE FULL
OPERATING FORCE ——— 10 - 22 OZ	CONTACT ARRANGEMENT S P D T			DO NOT SCALE PRINT
RELEASE FORCE ——— 4 OZ MIN	LINE VOLTAGE	INDUCTIVE LOAD	RESISTIVE LOAD	UNLESS OTHERWISE SPECIFIED DIMENSIONS ARE IN INCHES
DIFFERENTIAL TRAVEL ——— .020 MAX	28 VDC	8 AMP	10 AMP	TOLERANCES ARE:
OVERTRAVEL ——— .010 MIN	125 VAC	1 AMP	.5 AMP	ONE PLACE (.0) ±.030 TWO PLACE (.00) ±.015 THREE PLACE (.000) ±.005 ANGLES
				WEIGHT 4