

MICRO SWITCH
A DIVISION OF MINNEAPOLIS-HONEYWELL REGULATOR COMPANY
FREEPORT, ILLINOIS
FED. MFR. CODE 91929

SWITCH - BASIC

(M) 4HS4-918
ISSUE 7

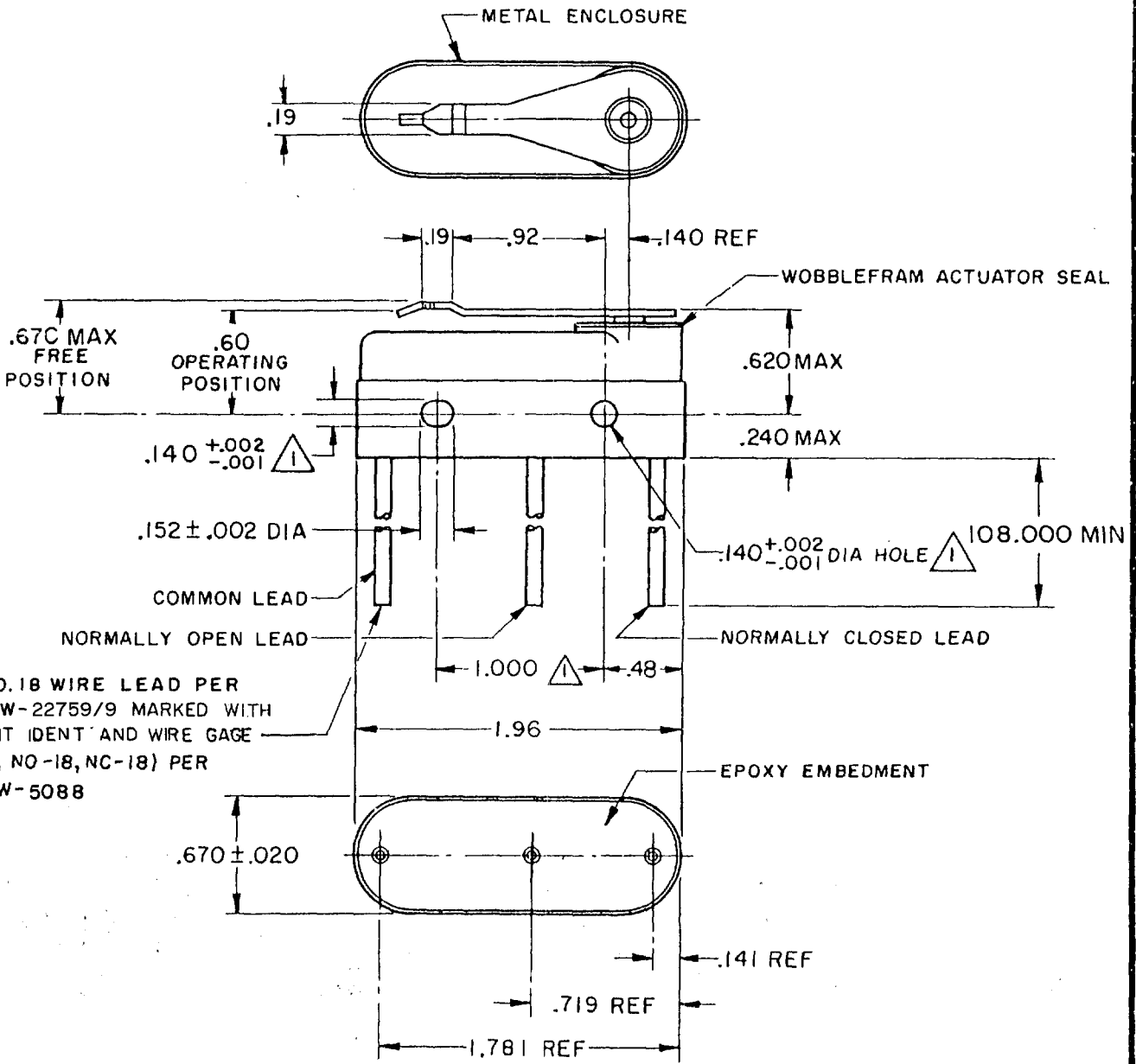
4HS4-918
PAGE 1 OF 1

M
DRAWING NUMBER

ISSUE
8
14
10
11

REVISIONS

A	CO15761	OMW	28 APR 61
B	CO51690-D	RJH	22 APR 83
C	CO55162-B	KEW	5 OCT 84
D	CO61043	TSK	29 AUG 88
E	CO72580	DAW	20 AUG 92
F	CO73625	JDB	9 JULY 93
G	CO-94122	TSM	12 MAR 99



(3) NO. 18 WIRE LEAD PER MIL-W-22759/9 MARKED WITH CIRCUIT IDENT AND WIRE GAGE (C-18, NO-18, NC-18) PER MIL-W-5088

- NOTE -
- 1 - MOUNTING HOLES WILL ACCEPT PINS OR SCREWS OF .139 MAX DIA ON 1.000 ± .002 CENTERS
 - 2 - FOR USE IN AMBIENT TEMPERATURE RANGE FROM MINUS 65°F TO PLUS 250°F
 - 3 - WEIGHT OF SWITCH ONLY IS 1.5 OZ MAX WEIGHT OF CONDUCTOR GROUP ONLY IS 0.5 OZ MAX PER FOOT

THIS DRAWING COVERS A PROPRIETARY ITEM AND IS THE PROPERTY OF MICRO SWITCH, A DIVISION OF MINNEAPOLIS-HONEYWELL REGULATOR CO. THIS DRAWING IS NOT TO BE COPIED OR USED WITHOUT THE APPROVAL OF MICRO SWITCH.

CHARACTERISTICS	ELECTRICAL DATA			SCALE FULL
OPERATING FORCE ----- 10-22 OZ	CONTACT ARRANGEMENT S P D T		BREAK DISTANCE	DO NOT SCALE PRINT
RELEASE FORCE ----- 4 OZ MIN	LINE VOLTAGE	INDUCTIVE LOAD	RESISTIVE LOAD	UNLESS OTHERWISE SPECIFIED
PRETRAVEL ----- .065 MAX	28 VDC 125 VAC	8 AMP 1 AMP	15 AMP .5 AMP	DIMENSIONS ARE IN INCHES
DIFFERENTIAL TRAVEL ----- .020 MAX				TOLERANCES ARE:
OVERTRAVEL ----- .010 MIN				ONE PLACE (.0) ±.030 TWO PLACE (.00) ±.015 THREE PLACE (.000) ±.005 ANGLES ±
				WEIGHT 3

FO-50378
FORMTEK
DRAWN

OMW 28 APR 61 CHECK DAW 6 MAY 61 CHECK DAW 6 MAY 61 CHECK DAW 6 MAY 61 CHECK DAW 6 MAY 61 CHECK DAW 6 MAY 61 CHECK