

MICRO SWITCH
a Honeywell Division

FED. MFG. CODE 91929

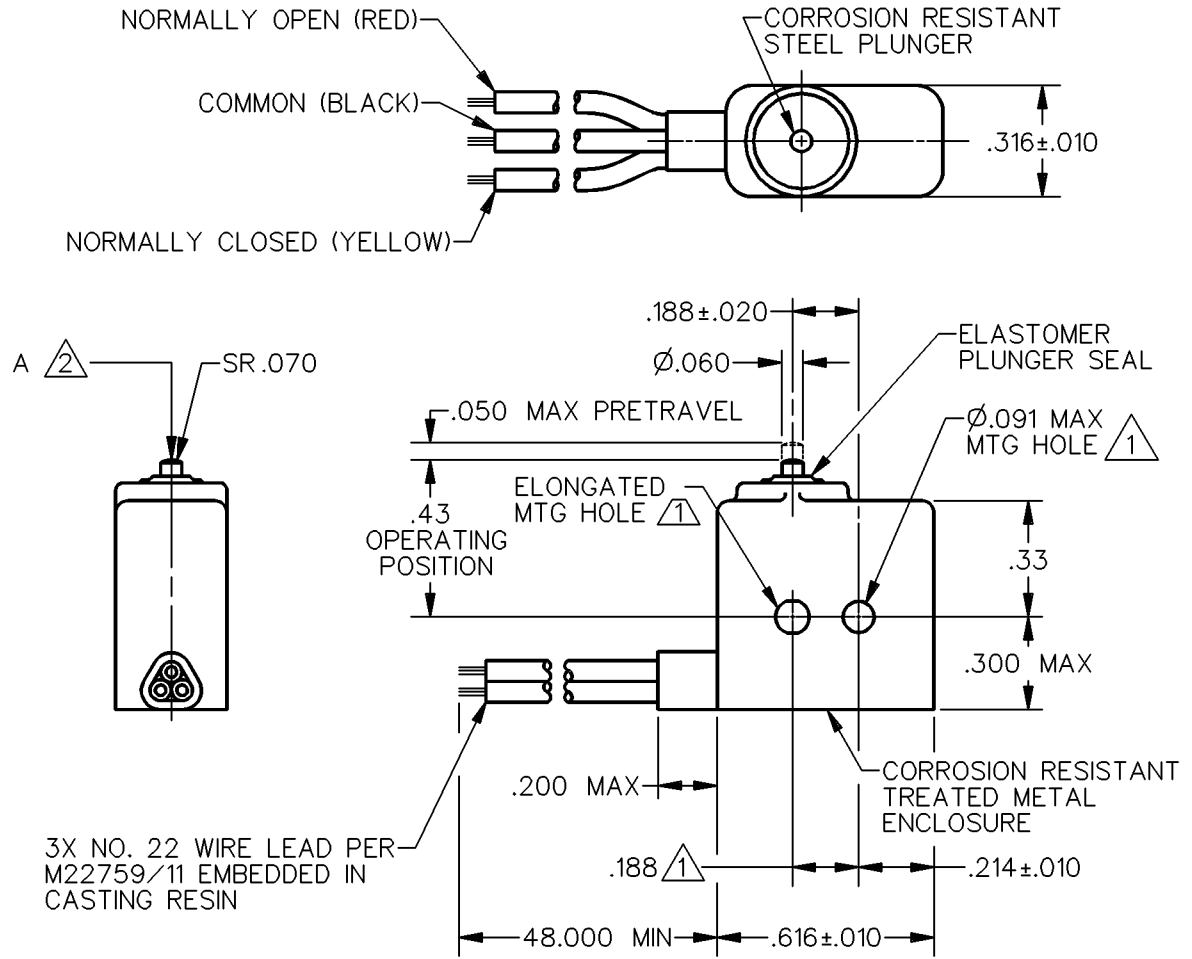
SWITCH-BASIC

CATALOG LISTING

6XE21-4

CATALOG LISTING
 6XE21-4
 PAGE 1 OF 1
 ISSUE 8
 REVISIONS
 A CO-1 50820 K D R 5 JUN 95
 B 0063672 KNR 20 APR 10
 CHECK
 20 APR 10
 CMH
 CHECK
 5 JUN 95
 DRAWN
 RASTER

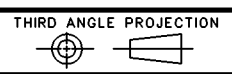
REPLACES
 SR-11284
 CHECK
 20 APR 10
 CMH
 CHECK
 5 JUN 95



- NOTES
- 1 MOUNTING HOLES WILL ACCEPT Ø.087 MAX PINS OR SCREWS ON .188±.002 CENTERS
 - 2 ACTUATION IN LINE WITH ARROW "A" IS RECOMMENDED
 - 3 WEIGHT OF SWITCH ONLY IS .16 OZ MAX, WEIGHT OF SWITCH WITH WIRE LEADS IS 1.12 OZ MAX

ANSI Y14.5M-1982 APPLIES

THIS DRAWING COVERS A PROPRIETARY ITEM AND IS THE PROPERTY OF MICRO SWITCH, A DIVISION OF HONEYWELL. THIS DRAWING IS NOT TO BE COPIED OR USED WITHOUT THE APPROVAL OF MICRO SWITCH.



CHARACTERISTICS	ELECTRICAL DATA	SCALE 2 TO 1	DO NOT SCALE PRINT
OPERATING FORCE — — — — 10 OZ MAX	CONTACT ARRANGEMENT S P D T	UNLESS OTHERWISE SPECIFIED TOLERANCES ARE ONE PLACE (.0) ±.030 TWO PLACE (.00) ±.015 THREE PLACE (.000) ±.005 ANGLES ± WEIGHT 3	
RELEASE FORCE — — — — 2 OZ MIN			
RELEASE TRAVEL — — — — .004 MIN			
DIFFERENTIAL TRAVEL — — — .005 MAX			
OVERTRAVEL — — — — .004 MIN			