

MICRO SWITCH

FREERPORT ILLINOIS, U.S.A
A DIVISION OF HONEYWELL
FED. MFG. CODE 91929

SWITCH - BASIC

CATALOG LISTING
BA-2RV2233T

ABS5680

BA-2RV2233T
PAGE 1 OF 1

M

DRAWING
NUMBER

8

ISSUE

REPLACES

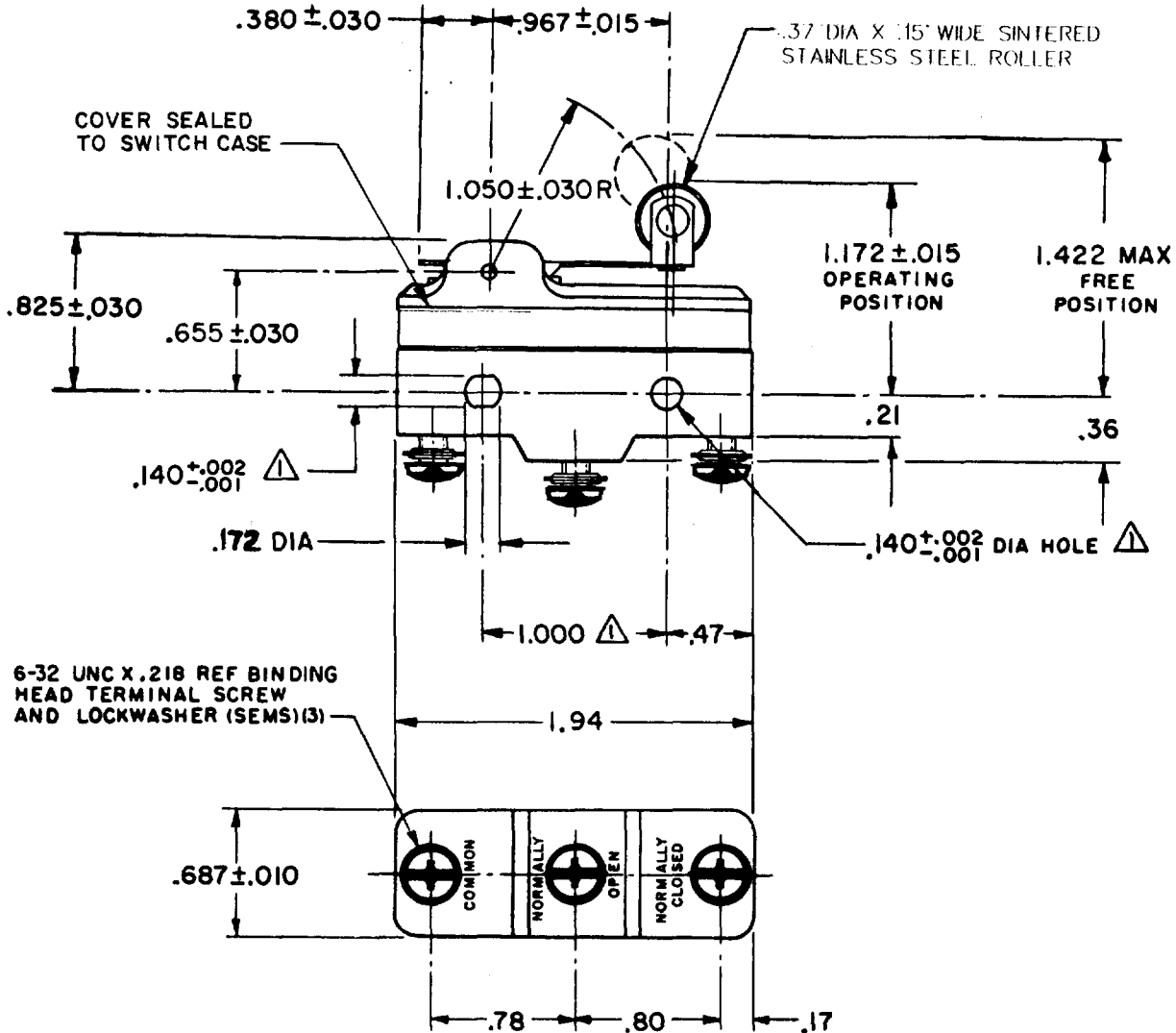
PR-5617

RELEASE NO.

CHECK

REVISIONS

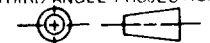
A	CO-89351-D	JWB	18 JUL 91
B	CO-70184-G	GJW	7 MAR 92
C	CO-77387	JJD	MAY 92
D	CO-75204B	DAW	1 FEB 94
E	CO-77596	SAB	9 JUN 94
F	C093346	DLT	26 AUG 98
G	0018388	TGP	17 FEB 06



NOTE -
▲ - MOUNTING HOLES WILL ACCEPT PINS OR SCREWS OF .139 MAX DIA ON 1.000 ±.002 CENTERS

THIS DRAWING COVERS A PROPRIETARY ITEM AND IS THE PROPERTY OF MICRO SWITCH, A DIVISION OF HONEYWELL. THIS DRAWING IS NOT TO BE COPIED OR USED WITHOUT THE APPROVAL OF MICRO SWITCH.

THIRD ANGLE PROJECTION



CHARACTERISTICS	
OPERATING FORCE	----- 6 OZ MAX
RELEASE FORCE	----- 1 1/2 OZ MIN
PRETRAVEL	----- .250 MAX
DIFFERENTIAL TRAVEL	----- .045 MAX
OVERTRAVEL	----- .030 MIN

ELECTRICAL DATA	
CONTACT ARRANGEMENT S P D T	
20A-125, 250 OR 480 VAC; 10A-125 VAC "L" 1HP-125 VAC; 2HP-250 VAC CODE L23 1/2A-125 VDC; 1/4A-250 VDC	
L288	CE
L308	20(3)A 250V ~ T85 5E4
L315	

SCALE FULL			
DO NOT SCALE PRINT			
TOLERANCES			
APPLY TO DESIGN UNITS. CONVERSIONS ARE ONLY FOR REFERENCE. UNLESS NOTED, TOLERANCES ARE ±			
DM.	TOL.	DM.	TOL.
mm	mm/in	in	mm/in
NO PLACES	X	1/04	
ONE PLACE	X,X	0.4/018	X X 0.8/03
TWO PLACES	X,XX	0.15/008	X XX 0.38/015
THREE PLACES	X,XXX		X XXX 0.13/005
ANGLES			
SI METRIC		US CUSTOMARY	
DESIGN UNITS <input type="checkbox"/>		<input checked="" type="checkbox"/>	
WEIGHT			

FORMTEK
FO-52848-A

DRAWN

J A L 13 FEB 76 CHECK CEB 17 FEB 76 CHECK RJ 17 FEB 06