

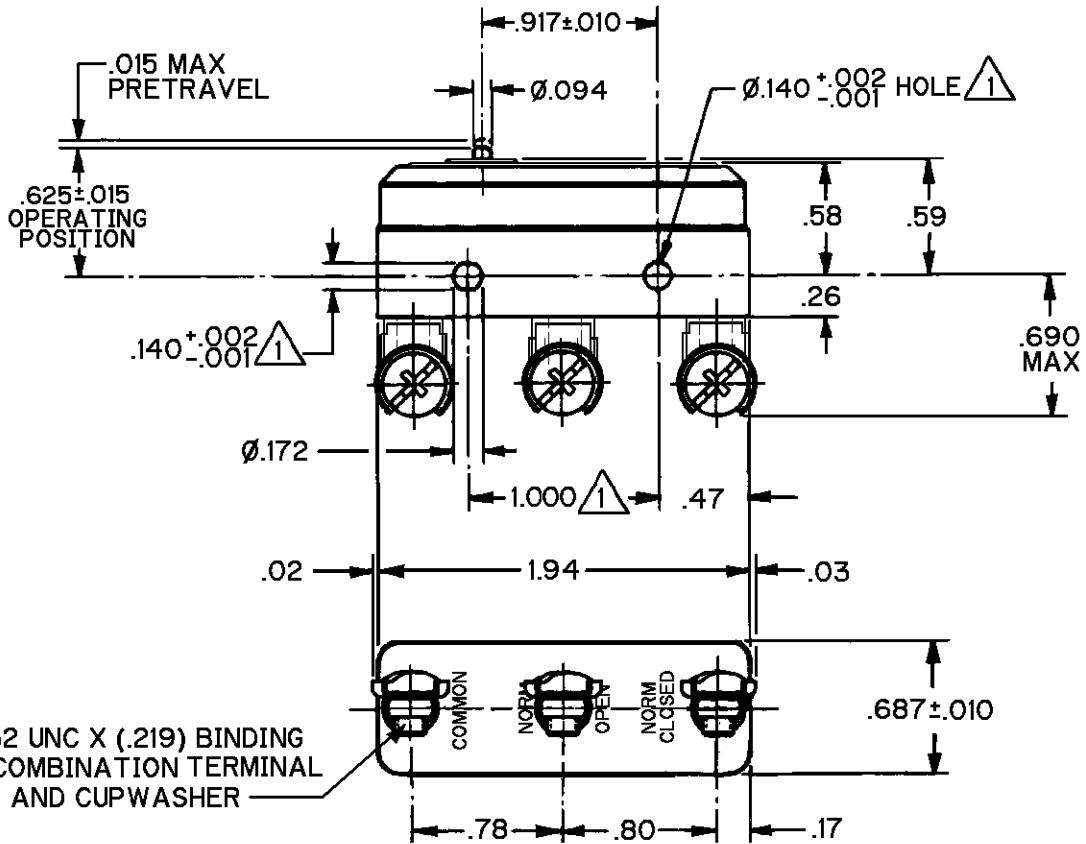
CATALOG LISTING
BZ-1R374-P4
 PAGE 1 OF 1
 ISSUE 5
 REVISIONS
 A 202882 CSL 17 APR 01
 B 204822 G J W JAN 02
 C 206291 MDM 23 AUG 02
 D 0011966 CVS 23 MAR 05
 RASTER
 DRAWN
 D L T 07 AUG 00
 CHECK
 S A V 07 AUG 00
 CHECK
 A K 23 MAR 05
 CHECK
 C H E C K
 201017
 RELEASE NO.
 201017
 REPLACES
 X111311-BZ

MICRO SWITCH
a Honeywell Division

FED. MFG. CODE 91929

SWITCH-BASIC

CATALOG LISTING
BZ-1R374-P4



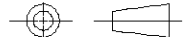
3X 8-32 UNC X (.219) BINDING HEAD COMBINATION TERMINAL SCREW AND CUPWASHER

NOTE
 MOUNTING HOLES WILL ACCEPT PINS OR SCREWS OF Ø.139 MAX ON 1.000 ± .002 CENTERS

ANSI Y14.5M-1982 APPLIES

THIS DRAWING COVERS A PROPRIETARY ITEM AND IS THE PROPERTY OF MICRO SWITCH, A DIVISION OF HONEYWELL. THIS DRAWING IS NOT TO BE COPIED OR USED WITHOUT THE APPROVAL OF MICRO SWITCH.

THIRD ANGLE PROJECTION



CHARACTERISTICS

OPERATING FORCE ----- 8 - 10 OZ
 RELEASE FORCE ----- 4 - 5 OZ
 DIFFERENTIAL TRAVEL --- .0005-.0015
 OVERTRAVEL ----- .015 MIN

ELECTRICAL DATA

CONTACT ARRANGEMENT
SPDT
 L103
 15A 125, 250 OR 480 VAC
 1/8HP 125 VAC, 1/4HP 250 VAC



16A 250V ~ T85 5E4

SCALE FULL

DO NOT SCALE PRINT

UNLESS OTHERWISE SPECIFIED TOLERANCES ARE
 ONE PLACE (.0) ±.030
 TWO PLACE (.00) ±.015
 THREE PLACE (.000) ±.005
 ANGLES ±

WEIGHT **.060 LB**