

MICRO SWITCH

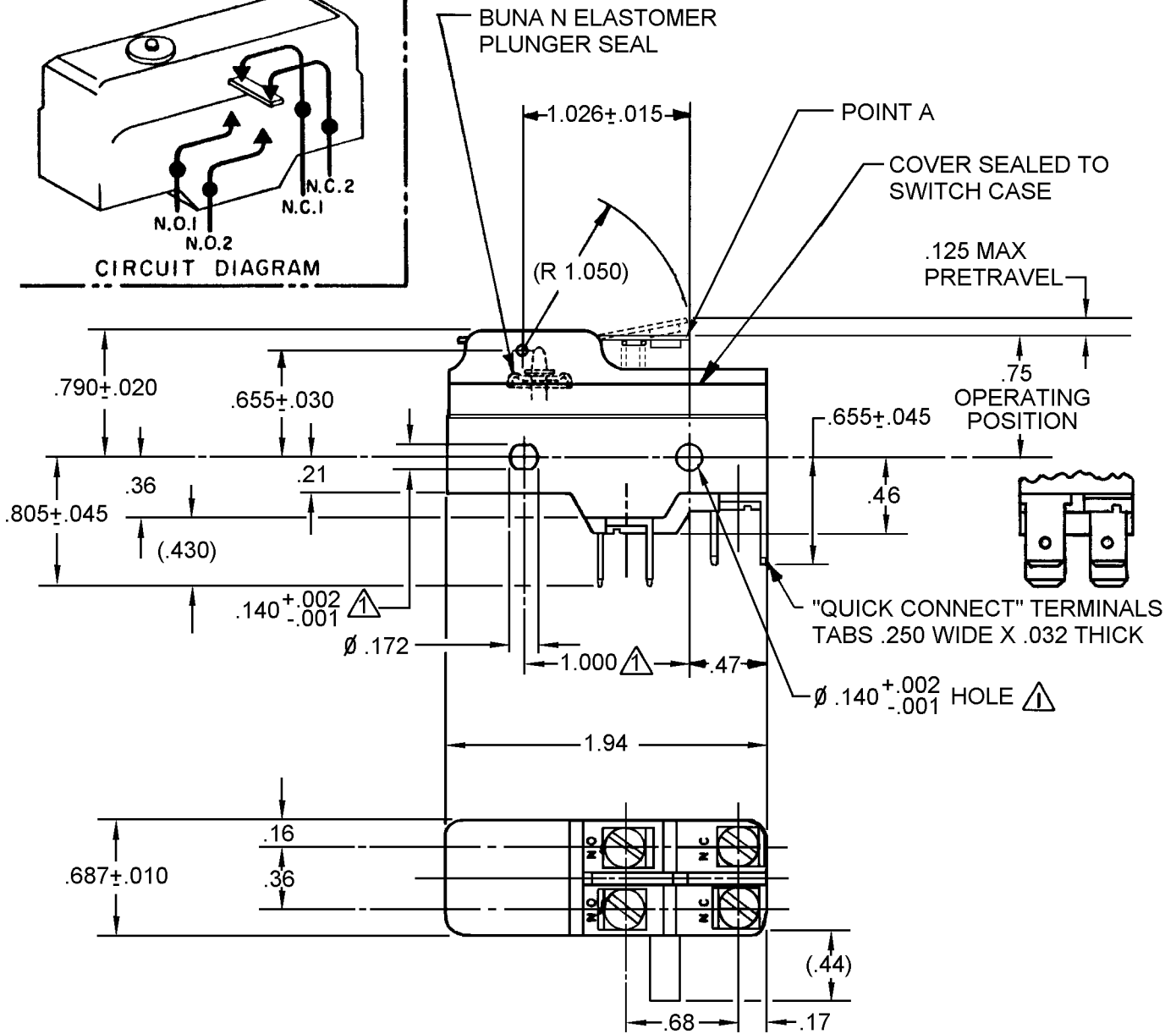
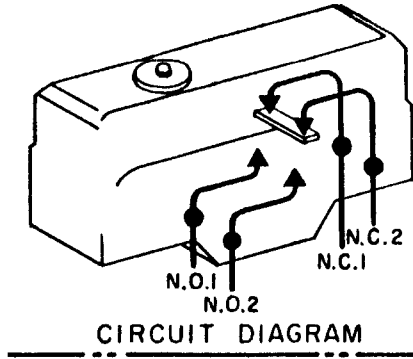
a Honeywell Division

FED. MF6. CODE 91929

SWITCH - BASIC

CATALOG LISTING

BZ-2AW8557-D6



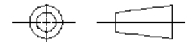
NOTES

- ① MOUNTING HOLES WILL ACCEPT PINS OR SCREWS OF $\phi .139$ MAX ON $1.000 \pm .002$ CENTERS
- 2 - SUITABLE ONLY FOR APPLICATIONS IMPARTING A RAPID STROKE TO THE SWITCH PLUNGER
- 3 - SEALED CONSTRUCTION PROVIDES SPLASH RESISTANCE
- ④ CHARACTERISTICS TAKEN AT POINT A

ANSI Y14.5M-1982 APPLIES

THIS DRAWING COVERS A PROPRIETARY ITEM AND IS THE PROPERTY OF MICRO SWITCH, A DIVISION OF HONEYWELL. THIS DRAWING IS NOT TO BE COPIED OR USED WITHOUT THE APPROVAL OF MICRO SWITCH.

THIRD ANGLE PROJECTION



CHARACTERISTICS	④
OPERATING FORCE	8 1/2 OZ MAX
RELEASE FORCE	1 1/2 OZ MIN
DIFFERENTIAL TRAVEL	.008 - .030
OVERTRAVEL	.094 MIN

ELECTRICAL DATA
CONTACT ARRANGEMENT
SEE CIRCUIT DIAGRAM

L73 15A 125, 250 OR 480 VAC
 1A 125 VDC, 0.5A 250 VDC
 1/4HP 125 VAC, 1/2HP 250 VAC



SCALE	FULL	DO NOT SCALE PRINT
UNLESS OTHERWISE SPECIFIED TOLERANCES ARE		
ONE PLACE	(.0)	$\pm .030$
TWO PLACE	(.00)	$\pm .015$
THREE PLACE	(.000)	$\pm .005$
ANGLES		\pm
WEIGHT		

CATALOG LISTING BZ-2AW8557-D6
 PAGE 1 OF 1
 ISSUE 3
 REVISIONS
 A 203596
 CSL 27 JUL 01
 B 206178
 CSL 7 AUG 02
 CHECK
 19 JUN 01
 SAV
 CHECK
 19 JUN 01
 RASTER DRAWN
 CSL 19 JUN 01
 REPLACES X113237-BZ
 RELEASE NO. 203327