

MICRO SWITCH

FREERPORT ILLINOIS, U.S.A
A DIVISION OF HONEYWELL
FED. MFG. CODE 91929

SWITCH - BASIC

CATALOG LISTING

BZ-2RW80225-A2

BZ-2RW80225-A2

PAGE 1 OF 1

DRAWING NUMBER

ISSUE

4

REPLACES X66885 - BZ

RELEASE NO. PR-6620

CHECK

REVISIONS

A	CO-73287-B	D H D	19 MAY 93
B	CO-77589	MAM	29 MAR 94
C	CO93346	DLT	2 SEP 98

CHECK

3 AUG 77

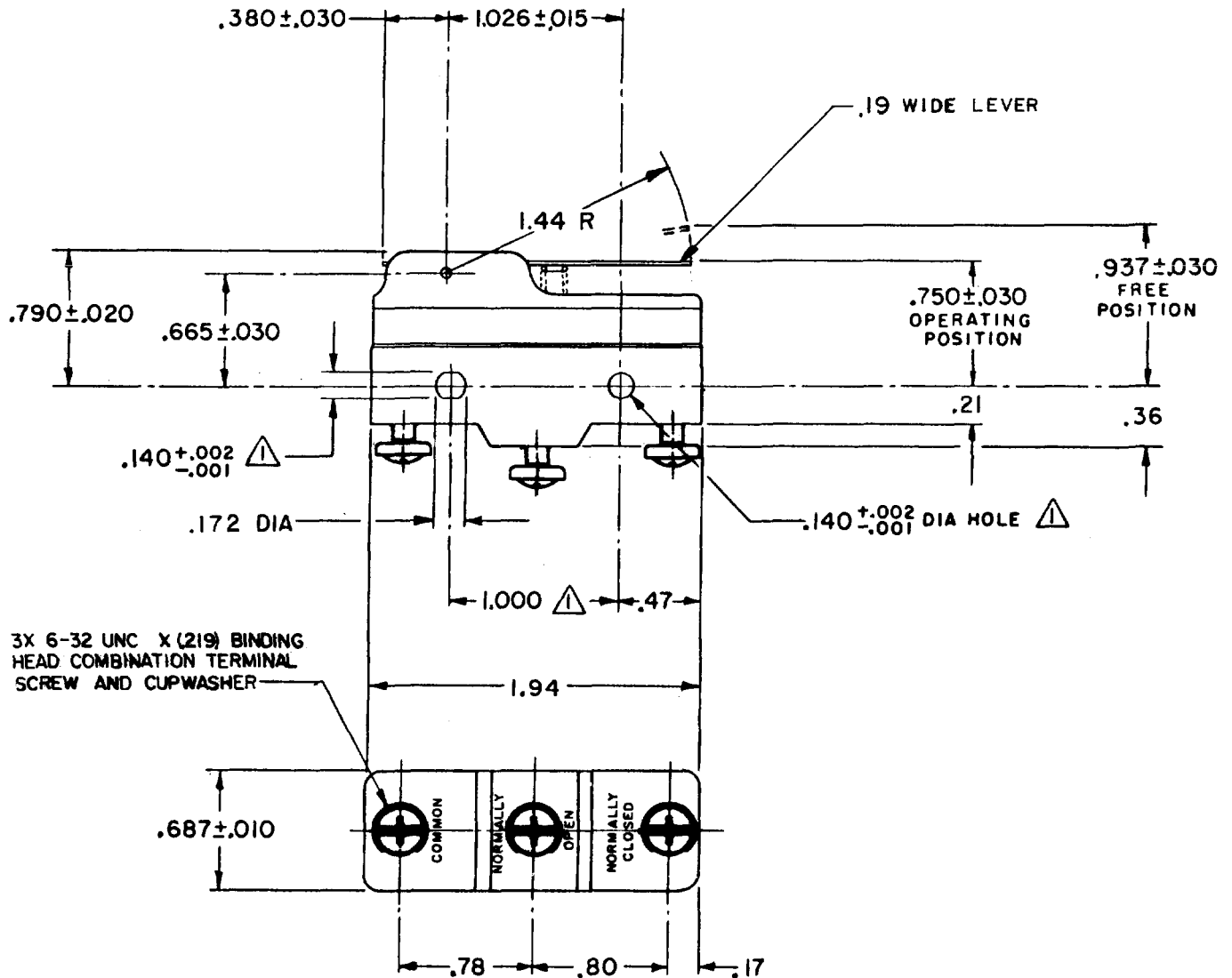
CHECK

3 AUG 77

DRAWN

FORMTEK

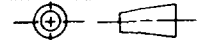
FO-52848-A



NOTE
MOUNTING HOLES WILL ACCEPT PINS OR SCREWS OF .139 MAX DIA ON 1.000±.002 CENTERS

THIS DRAWING COVERS A PROPRIETARY ITEM AND IS THE PROPERTY OF MICRO SWITCH, A DIVISION OF HONEYWELL. THIS DRAWING IS NOT TO BE COPIED OR USED WITHOUT THE APPROVAL OF MICRO SWITCH.

THIRD ANGLE PROJECTION



CHARACTERISTICS

OPERATING FORCE --- 4 1/2 OZ MAX
RELEASE FORCE ----- 3/4 OZ MIN
DIFFERENTIAL TRAVEL --- .004-.030
OVERTRAVEL ----- .141 MIN

ELECTRICAL DATA

CONTACT ARRANGEMENT
S P D T
UL LISTED - FILE E12252
15A-125, 250 OR 480 VAC, 2A-600 VAC
1/8HP-125 VAC; 1/4HP-250 VAC
CODE L74 1/2A-125 VDC; 1/4A-250 VDC
L288 **CE** **D** **SI**
L299
L306 16A 250V ~ T85 5E4

SCALE FULL

DO NOT SCALE PRINT

TOLERANCES				
APPLY TO DESIGN UNITS. CONVERSIONS ARE ONLY FOR REFERENCE. UNLESS NOTED, TOLERANCES ARE ±				
	DIM.	TOL.	DIM.	TOL.
	mm	mm/in	in	mm/in
NO PLACES	X	1/04	X	0.8/03
ONE PLACE	X,X	0.4/016	X,X	0.38/015
TWO PLACES	X,X,X	0.15/006	X,X,X	0.13/005
THREE PLACES				
ANGLES				

DESIGN UNITS SI METRIC US CUSTOMARY

WEIGHT .073 LB