

MICRO SWITCH

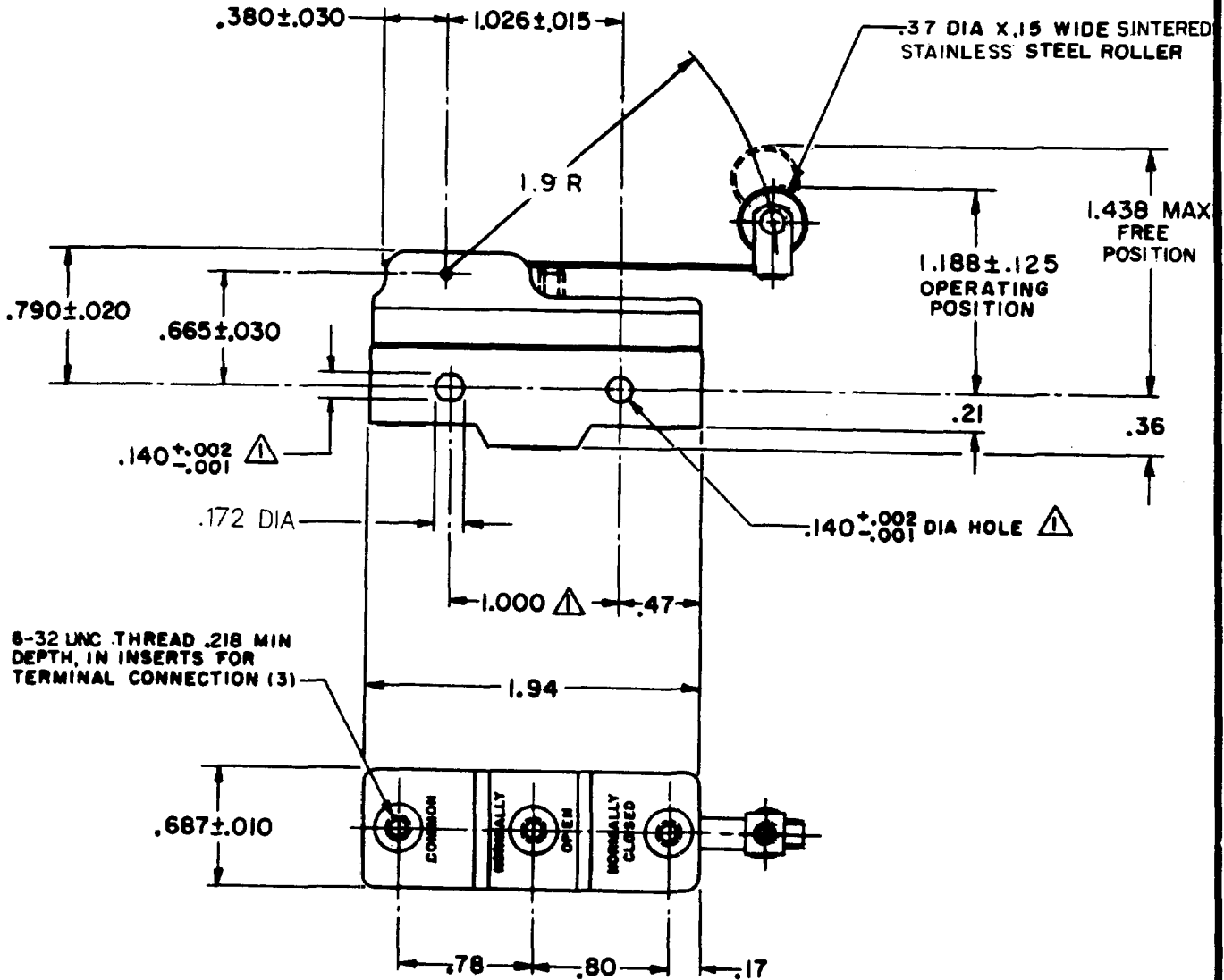
FREEMONT, ILLINOIS, U.S.A.
A DIVISION OF HONEYWELL
FED. MFG. CODE 91929

SWITCH - BASIC

CATALOG LISTING

BZ-2RW82120-A21

MI BZ-2RW82120-A21
 PAGE 1 OF 1
 DRAWING NUMBER
 ISSUE 6
 RELEASE NO. PR-1067
 CHECK
 REVISIONS
 A CO 27539
 S R H
 28 MAY 70
 B CO 73287-J
 J A L
 22 NOV 93
 C CO 75204-B
 W J C
 1 FEB 94
 D CO 77589
 T S M
 29 MAR 94
 E CO 93346
 D L T
 17 SEP 98
 CHECK
 G C H
 4 FEB 70
 4 FEB 70
 L S D
 3 FEB 70
 M B S
 3 FEB 70
 DRAWN
 3-30378-1A
 FORMTEK



NOTES
 ▲ MOUNTING HOLES WILL ACCEPT PINS OR SCREWS OF .139 MAX DIA ON 1.000±.002 CENTERS
 2 - 6-32 UNC X .219 REF BINDING HEAD COMBINATION TERMINAL SCREW (3), FURNISHED UNASSEMBLED

THIS DRAWING COVERS A PROPRIETARY ITEM AND IS THE PROPERTY OF MICRO SWITCH, A DIVISION OF HONEYWELL. THIS DRAWING IS NOT TO BE COPIED OR USED WITHOUT THE APPROVAL OF MICRO SWITCH.

CHARACTERISTICS	ELECTRICAL DATA	SCALE FULL
OPERATING FORCE — — 3 1/2 OZ MAX	CONTACT ARRANGEMENT S P D T	DO NOT SCALE PRINT
DIFFERENTIAL TRAVEL — — .040 MAX	L96 15A 125, 250 OR 480 VAC 1/2A 125 VDC, 1/4A 250 VDC 1/8HP 125 VAC, 1/4HP 250 VAC	UNLESS OTHERWISE NOTED DIMENSIONS ARE IN INCHES
OVERTRAVEL — — .156 MIN	L288 L299 L306 CE ⓓ Ⓢ 16A 250V ~ T85 5E4	TOLERANCES ARE: ONE PLACE (.0) ±.030 TWO PLACE (.00) ±.015 THREE PLACE (.000) ±.005 ANGLES 1/2°
		WEIGHT .076 LB