

MICRO SWITCH

A DIVISION OF MINNEAPOLIS-HONEYWELL REGULATOR COMPANY

FED. MFR. CODE 91929

SWITCH - BASIC

CATALOG LISTING

BZ-2RW8238-A2

M BZ-2RW8238-A2

PAGE 1 OF 1

DRAWING NUMBER

6

ISSUE

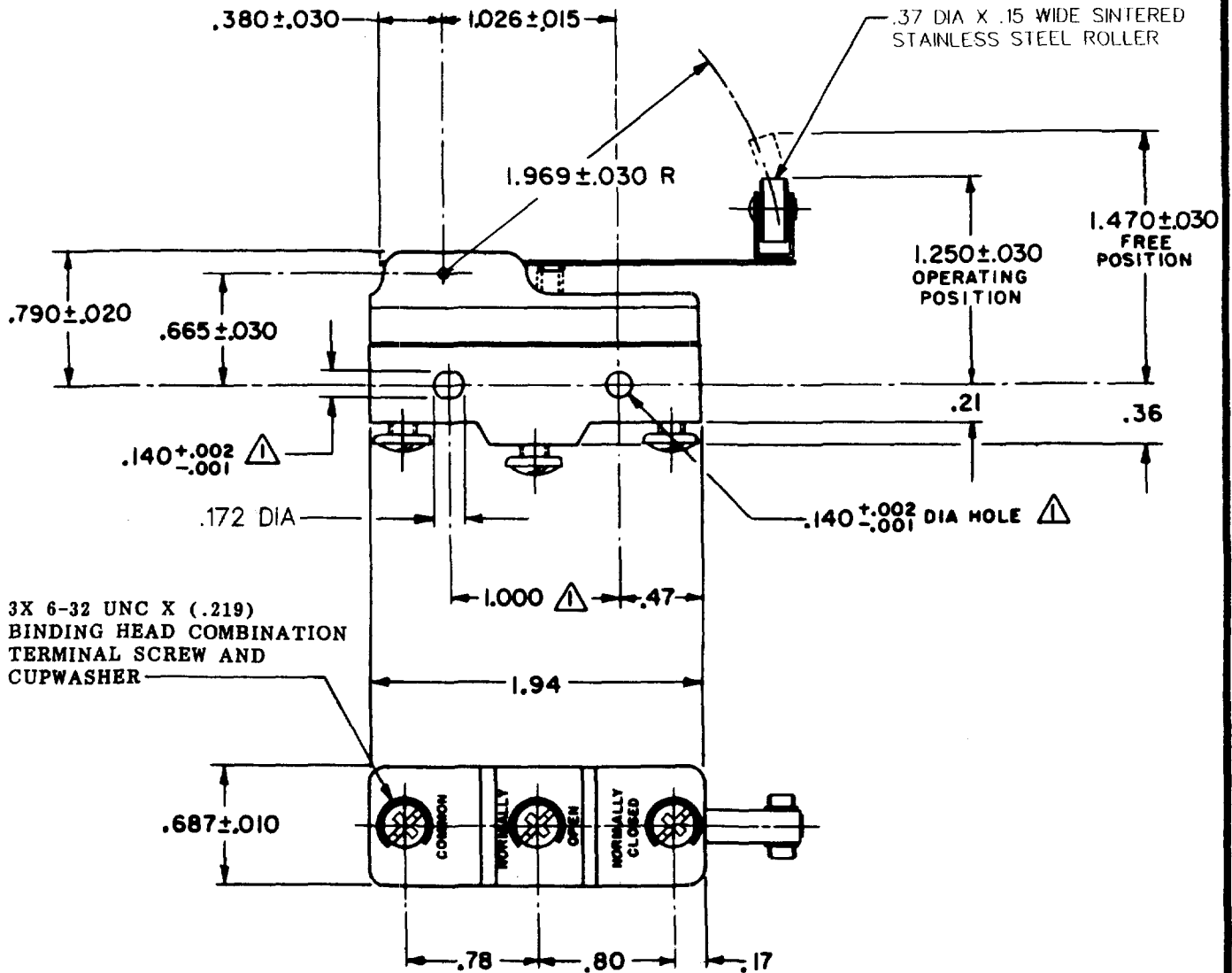
REPLACES

RELEASE NO.

CHECK

REVISIONS

A	CO	16736
B	CO	73287-J
C	CO	75204B
D	CO	77589
E	CO	093346



NOTE
 ▲ MOUNTING HOLES WILL ACCEPT PINS OR SCREWS OF .139 MAX DIA ON 1.000 ± .002 CENTERS

THIS DRAWING COVERS A PROPRIETARY ITEM AND IS THE PROPERTY OF MICRO SWITCH, A DIVISION OF MINNEAPOLIS-HONEYWELL REGULATOR CO. THIS DRAWING IS NOT TO BE COPIED OR USED WITHOUT THE APPROVAL OF MICRO SWITCH.

CHARACTERISTICS	ELECTRICAL DATA		SCALE FULL
OPERATING FORCE ----- 3 1/2 OZ MAX	CONTACT ARRANGEMENT S P D T	BREAK DISTANCE .020 MIN	DO NOT SCALE PRINT
RELEASE FORCE ----- 3/4 OZ MIN	UNDERWRITERS' LAB. INC. LISTED RATING -L96- 15 A-125, 250, OR 480 VAC 1/2 A-125 VDC; 1/4 A-250 VDC 1/8 HP-125 VAC; 1/4 HP-250 VAC		UNLESS OTHERWISE SPECIFIED DIMENSIONS ARE IN INCHES TOLERANCES ARE: ONE PLACE (.0) ±.030 TWO PLACE (.00) ±.015 THREE PLACE (.000) ±.005 ANGLES ±
DIFFERENTIAL TRAVEL ----- .004 - .040	-L288-	CE D	WEIGHT .076 LB
OVERTRAVEL ----- .156 MIN	-L299-	16A 250V ~ T85 5E4	
	-L306-		

FORMTEK

DRAWN

CHECK

CHECK

CHECK

CHECK

CHECK

FO-30378

CHECK

CHECK

CHECK

CHECK

CHECK

CHECK