

MICRO SWITCH

FREEPORT ILLINOIS, U.S.A
A DIVISION OF HONEYWELL

FED. MFG. CODE 91929

SWITCH - BASIC

CATALOG LISTING
BZ-3YT552

ARG5500

M BZ-3YT552

DRAWING NUMBER

ISSUE

CMH

REVISIONS

A PR-901

R E R

B OCT 69

C067209

J A P

3 MAY 90

CO-69351-D

JWB

18 JUL 91

D CO-77590

SAD

10 JUN 94

E CO-79125

SAD

2 DEC 94

F 0059111

LK

26NOV09

DRAWN

R E R

3 OCT 69

FO-50378-1A

REPLACES

RELEASE NO. PR-901

26NOV09

CHECK

9

OCT 69

OCT 69

OCT 69

OCT 69

OCT 69

OCT 69

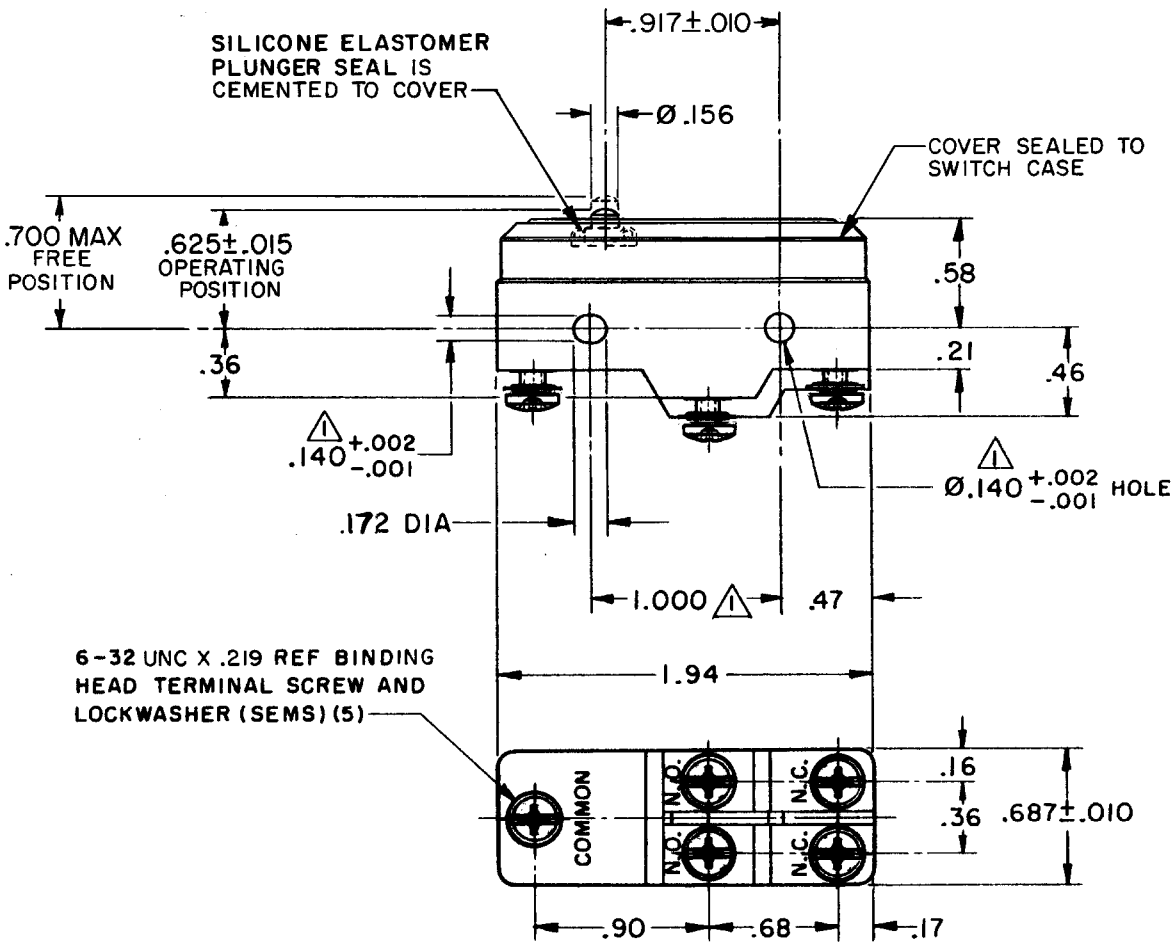
OCT 69

OCT 69

OCT 69

OCT 69

OCT 69



- NOTE -**
- 1 - MOUNTING HOLES WILL ACCEPT PINS OR SCREWS OF Ø.139 MAX ON 1.000 ± .002 CENTERS
 - 2 - SEALED SWITCH CONSTRUCTION PROVIDES SPLASH RESISTANCE
 - 3 - SWITCH WILL PERFORM SATISFACTORILY IN TEMPERATURES TO MINUS 40°F

THIS DRAWING COVERS A PROPRIETARY ITEM AND IS THE PROPERTY OF MICRO SWITCH, A DIVISION OF HONEYWELL. THIS DRAWING IS NOT TO BE COPIED OR USED WITHOUT THE APPROVAL OF MICRO SWITCH.

CHARACTERISTICS	
OPERATING FORCE	16- 26 OZ
RELEASE FORCE	4 OZ MIN
DIFFERENTIAL TRAVEL	.001-.004
OVERTRAVEL	-.005 MIN

ELECTRICAL DATA	
CONTACT ARRANGEMENT SINGLE POLE DOUBLE THROW SPLIT CONTACT	
L4	
5A 250 VAC	

SCALE FULL	
DO NOT SCALE PRINT	
UNLESS OTHERWISE NOTED	
DIMENSIONS ARE IN INCHES	
TOLERANCES ARE:	
ONE PLACE	(.0) ±.030
TWO PLACE	(.00) ±.015
THREE PLACE	(.000) ±.005
ANGLES	±
WEIGHT	