

# MICRO SWITCH

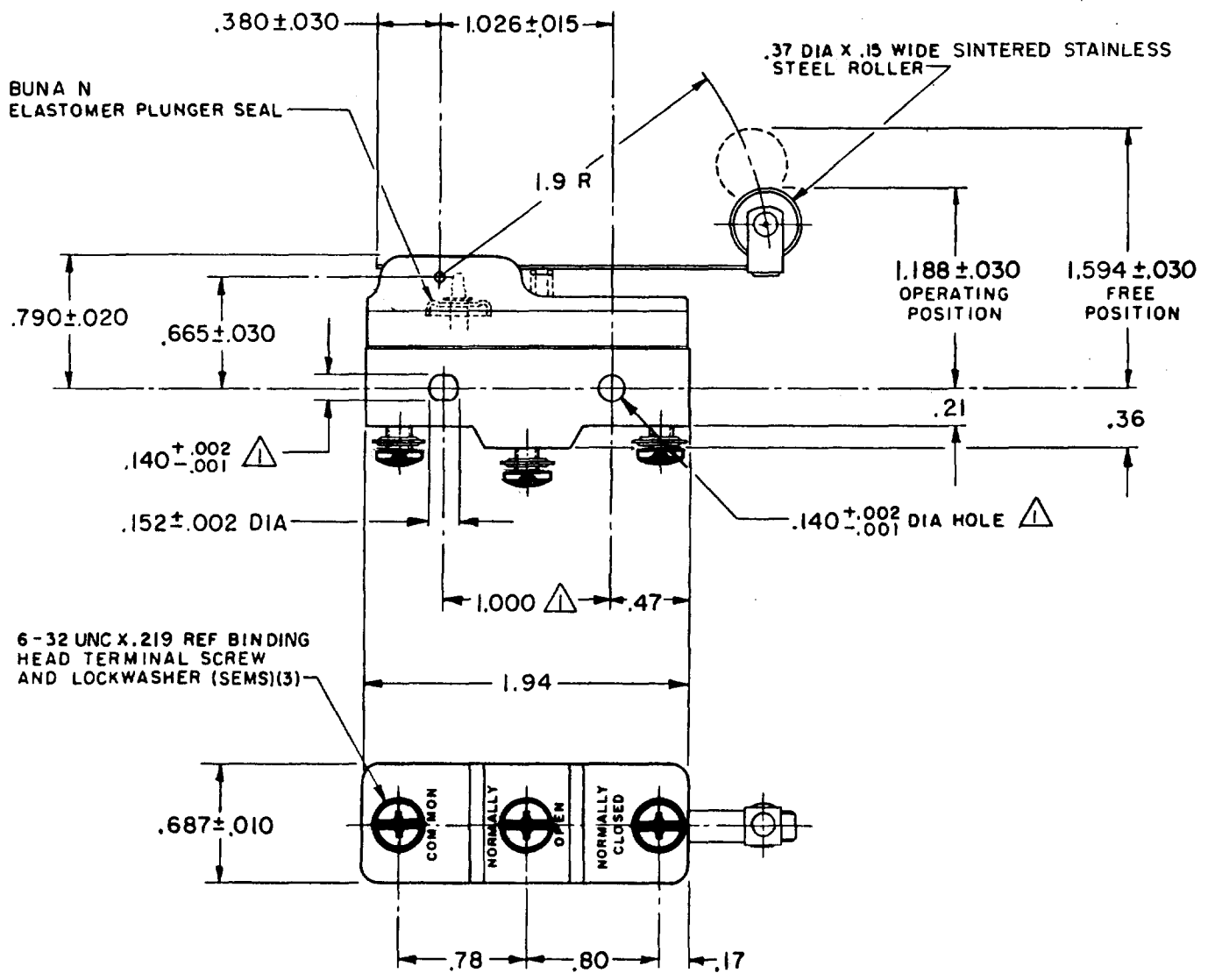
FREERPORT ILLINOIS, U.S.A  
A DIVISION OF HONEYWELL  
FED. MFG. CODE 91929

## SWITCH-BASIC

CATALOG LISTING  
**BZ-7RW82127T-S**

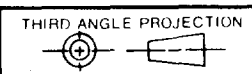
**M** BZ-7RW82127T-S  
PAGE 1 OF 1  
DRAWING NUMBER  
8  
ISSUE

REPLACES X66935-BZ  
RELEASE NO. PR-6729  
CHECK  
REVISIONS  
A CO 39660  
9LH  
15 FEB 78  
B CO 45576  
S J B  
5 MAR 79  
C CO 48454  
J A P  
14 OCT 80  
D CO 67209  
J A P  
2 MAY 90  
E CO 59351-D  
JWB  
18 JUL 91  
F CO 75204-B  
WJC  
1 FEB 94  
G CO 93346  
DLT  
23 SEP 98  
9 DEC 77  
9 DEC 77  
CHECK  
FORMTEK  
FO-52848-A  
DRAWN  
W L W 6 DEC 77  
9 DEC 77



**NOTE**  
▲ MOUNTING HOLES WILL ACCEPT PINS OR SCREWS OF .139 MAX DIA ON 1.000±.002 CENTERS

THIS DRAWING COVERS A PROPRIETARY ITEM AND IS THE PROPERTY OF MICRO SWITCH, A DIVISION OF HONEYWELL. THIS DRAWING IS NOT TO BE COPIED OR USED WITHOUT THE APPROVAL OF MICRO SWITCH.



CHARACTERISTICS	ELECTRICAL DATA	SCALE FULL
OPERATING FORCE----- 5 OZ MAX	CONTACT ARRANGEMENT S P D T	DO NOT SCALE PRINT
RELEASE FORCE----- 3/4 OZ MIN	L 197	TOLERANCES
DIFFERENTIAL TRAVEL----- .150 MAX	15A 125, 250, 277 VAC	APPLY TO DESIGN UNITS. CONVERSIONS ARE ONLY FOR REFERENCE. UNLESS NOTED, TOLERANCES ARE ±
OVERTRAVEL----- .156 MIN	1/8 HP 125 VAC; 1/4 HP 250 VAC	
	1/2A 125 VDC; 1/4A 250 VDC	
	L288	DIM. TOL. DIM. TOL.
	L299	mm mm/in in mm/in
	L306	NO PLACES X X 1/04 X X 0.07/03
		ONE PLACE X,X 0.4/016 X X 0.38/015
		TWO PLACES X,XX 0.15/006 X XX 0.13/005
		THREE PLACES X,XXX
		ANGLES
	CE D FU SP	DESIGN UNITS <input type="checkbox"/> METRIC <input checked="" type="checkbox"/> US CUSTOMARY
	16A 250V ~ T85 5E4	WEIGHT .079 LB