

MICRO SWITCH

FREEPORT ILLINOIS, U S A
A DIVISION OF HONEYWELL
FED. MFG. CODE 91929

SWITCH - BASIC

CATALOG LISTING

BZ-R2136-P1

BZ-R2136-P1
PAGE 1 OF 1

M

DRAWING
NUMBER

X 2

X 4

ISSUE

REPLACES X86657-BZ

RELEASE NO. PR-15775

CHECK

REVISIONS

A	CO-73287-C	JUN 94
B	CO-77591	JUN 94
C	CO-94212-C	SEP 99

CHECK

JUL 87

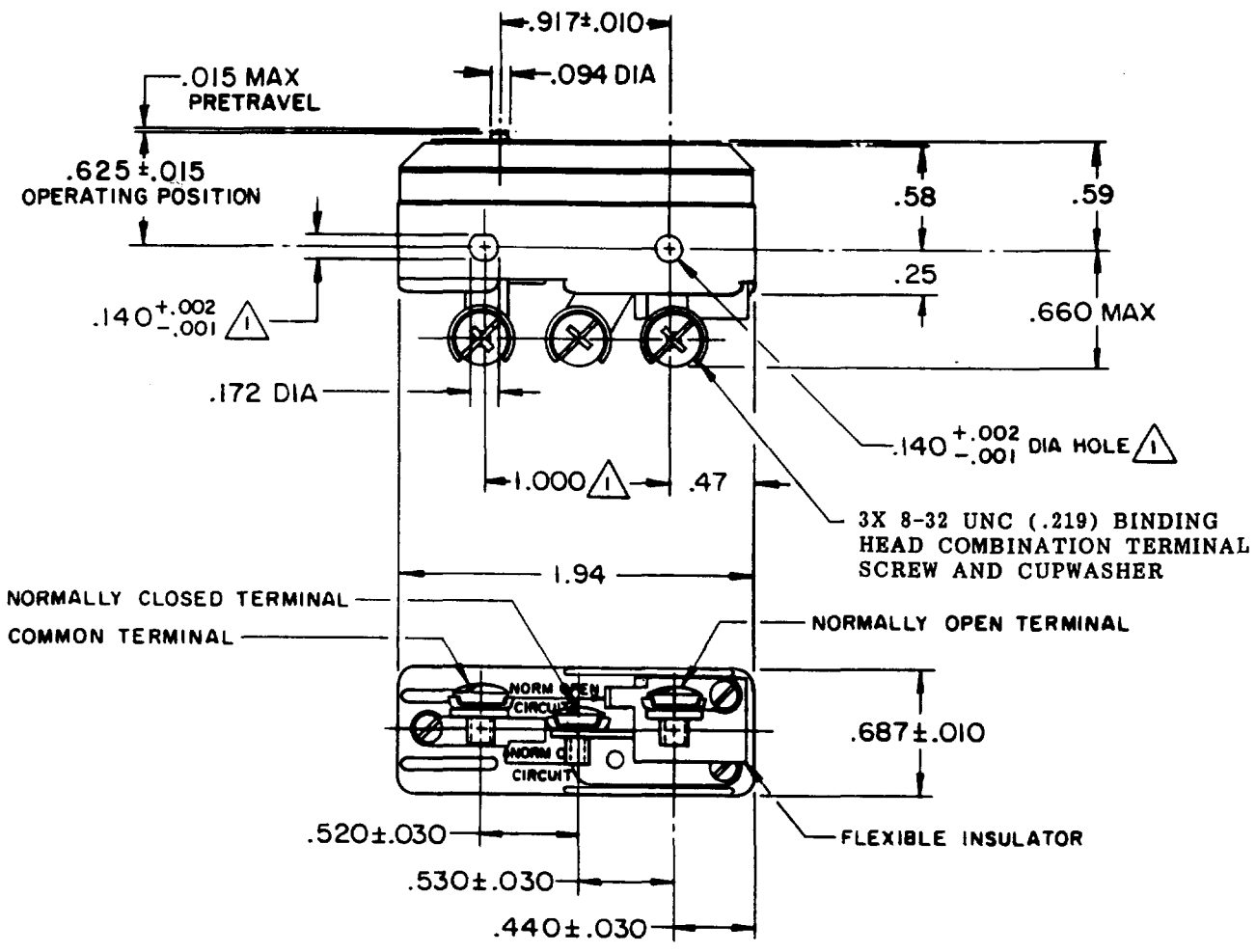
JUL 87

MAM 21 JUL 87

CHECK MAM 21 JUL 87

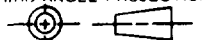
JUL 87

JUL 87



THIS DRAWING COVERS A PROPRIETARY ITEM AND IS THE PROPERTY OF MICRO SWITCH, A DIVISION OF HONEYWELL. THIS DRAWING IS NOT TO BE COPIED OR USED WITHOUT THE APPROVAL OF MICRO SWITCH.

THIRD ANGLE PROJECTION



CHARACTERISTICS

OPERATING FORCE	----- 4 OZ MAX
RELEASE FORCE	----- 2 1/2 OZ MIN
DIFFERENTIAL TRAVEL	---.0002 - .0005
OVERTRAVEL	----- .005 MIN

ELECTRICAL DATA

CONTACT ARRANGEMENT	S P D T
	L95
10A 125, 250 OR 480 VAC	
1/8 HP 125 VAC, 1/4 HP 250 VAC	

SCALE FULL

DO NOT SCALE PRINT				
TOLERANCES				
APPLY TO DESIGN UNITS. CONVERSIONS ARE ONLY FOR REFERENCE. UNLESS NOTED, TOLERANCES ARE \pm				
NO PLACES	DIM. mm	TOL. mm/in	DIM. in	TOL. mm/in
ONE PLACE	X	1/64	X	0.07/03
TWO PLACES	X,X	0.01/018	X,X	0.002/018
THREE PLACES	X,X,X	0.001/006	X,X,X	0.001/006
ANGLES				
DESIGN UNITS	SI METRIC		US CUSTOMARY	
WEIGHT	.065 LB			

FORMTEK
FO-52848-A
DRAWN

K A G 17 JUL 87

