

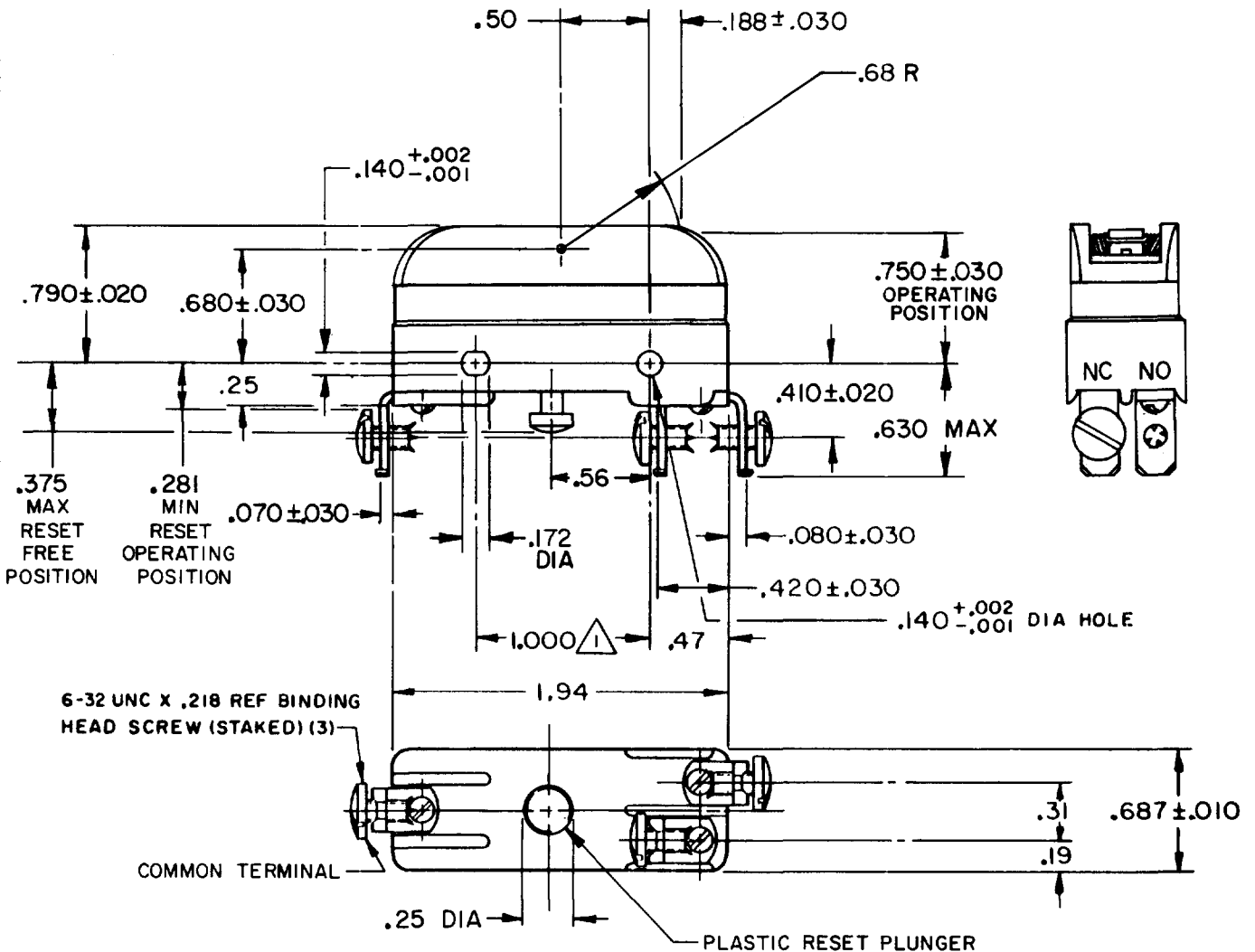
MICRO SWITCH

FREEDPORT ILLINOIS U.S.A.
A DIVISION OF HONEYWELL
FED. MFG. CODE 91929

SWITCH - BASIC

CATALOG LISTING

BZ-RMX6-B7

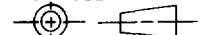


NOTE

1 - MOUNTING HOLES WILL ACCEPT PINS OR SCREWS OF .139 MAX DIA ON 1.000 ± .002 CENTERS

THIS DRAWING COVERS A PROPRIETARY ITEM AND IS THE PROPERTY OF MICRO SWITCH, A DIVISION OF HONEYWELL. THIS DRAWING IS NOT TO BE COPIED OR USED WITHOUT THE APPROVAL OF MICRO SWITCH.

THIRD ANGLE PROJECTION



CHARACTERISTICS

OVERTRAVEL ----- .125 MIN

RESET CHARACTERISTICS

(WITH LEVER HELD DOWNWARDS)

OVERTRAVEL ----- .015 MIN
OPERATING FORCE ----- 2-10 OZ

ELECTRICAL DATA

CONTACT ARRANGEMENT
SINGLE POLE DOUBLE THROW
MAINTAINED CONTACT

UL LISTED - FILE E12252
CODE L67 15A-125, 250 OR 480 VAC
1/4HP-125 VAC; 1/2HP-250 VAC
1/2A-125 VDC; 1/4A-250 VDC



SCALE FULL

DO NOT SCALE PRINT

TOLERANCES
APPLY TO DESIGN UNITS. CONVERSIONS ARE ONLY FOR REFERENCE. UNLESS NOTED, TOLERANCES ARE ±

DIM.	TOL.	DIM.	TOL.
mm	mm/in	in	mm/in
NO PLACES	X	.04	
ONE PLACE	X,X	0.4/.016	X,X 0.8/.03
TWO PLACES	X,XX	0.15/.006	X,XX 0.38/.015
THREE PLACES	X,XXX		X,XXX 0.13/.005

DESIGN UNITS SI METRIC US CUSTOMARY

WEIGHT

CATALOG LISTING
BZ-RMX6-B7
PAGE 1 OF 1
REPLACES PR-5561
DRAWING NUMBER **M**
ISSUE **6**
CHECK
REVISIONS
A OBS CO45523 SMA 30 JAN 79
B RE INET PR 9282 FAG 20 AUG 80
C CO54104 TSK 10 NOV 83
D CO77590
DLT 9 JUN 94
E 207437
CSL 14 FEB 03
CHECK 4 FEB 76
CHECK 4 FEB 76
CHECK 4 FEB 76
DRAWN J A L 129 JAN 76
FO-52848-A