

# MICRO SWITCH

FREEMONT ILLINOIS, U.S.A.  
A DIVISION OF HONEYWELL  
FED. MFG. CODE 91929

# SWITCH - BASIC

CATALOG LISTING

**BZ-RW8435122-A2**

**S**

**BZ-RW8435122-A2**

**M**

DRAWING NUMBER

**X 9**

**X X**

ISSUE

**X X**

REPLACES

RELEASE NO. PR-2988

CHECK

72

CHECK

72

CHECK

72

CHECK

72

CHECK

72

CHECK

72

CHECK

72

CHECK

72

CHECK

72

CHECK

72

CHECK

72

CHECK

72

CHECK

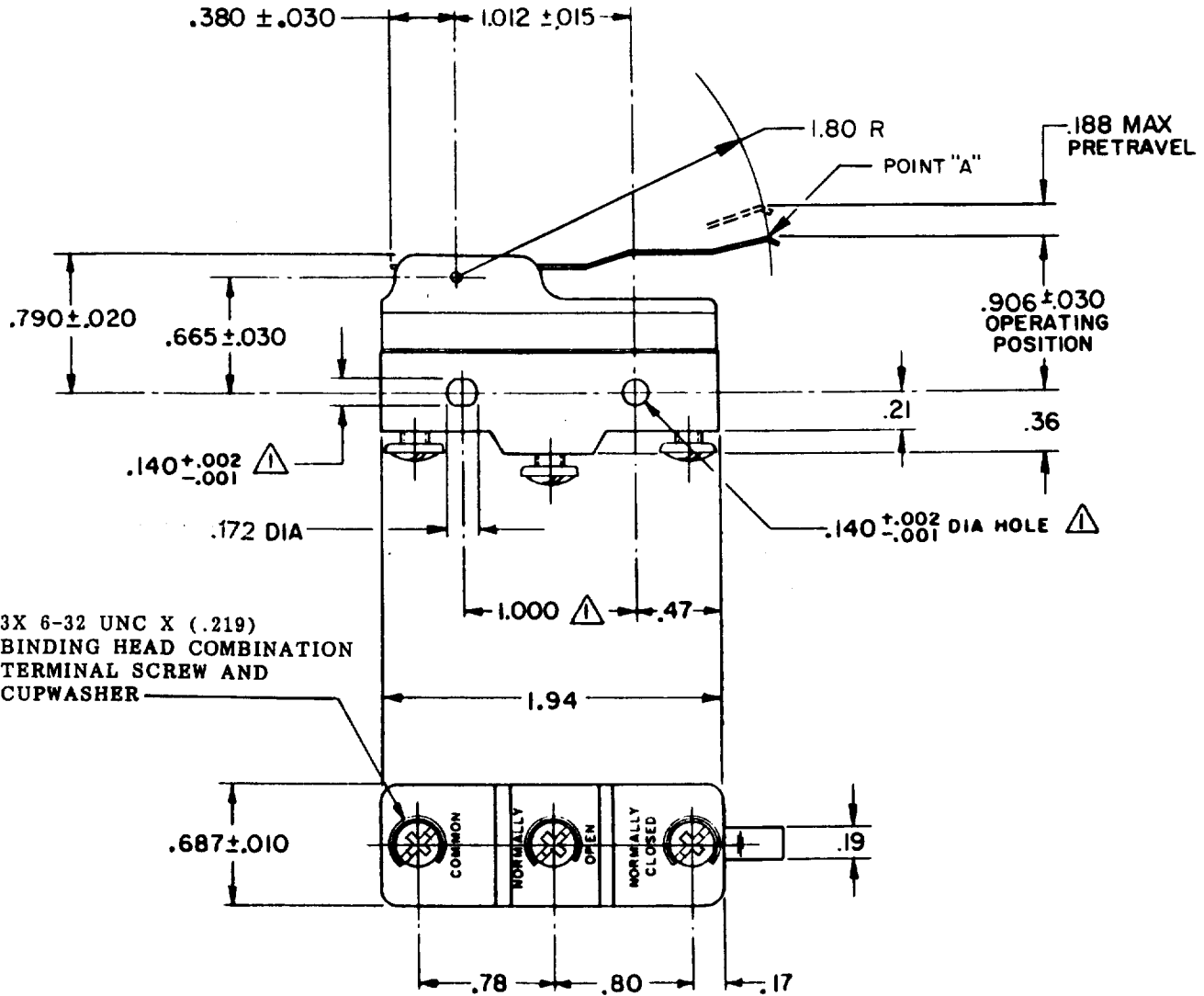
72

CHECK

72

CHECK

72

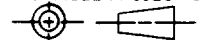


**NOTE -**

- △ - MOUNTING HOLES WILL ACCEPT PINS OR SCREWS OF .139 MAX DIA ON 1.000 ± .002 CENTERS
- ② - FORCES MEASURED WITH LEVER IN VERTICAL POSITION AND WITH CONTACT END DOWN

THIS DRAWING COVERS A PROPRIETARY ITEM AND IS THE PROPERTY OF MICRO SWITCH, A DIVISION OF HONEYWELL. THIS DRAWING IS NOT TO BE COPIED OR USED WITHOUT THE APPROVAL OF MICRO SWITCH.

THIRD ANGLE PROJECTION



**CHARACTERISTICS AT POINT "A"**

OPERATING FORCE -- 5 1/2 GRAM MAX  
②

DIFFERENTIAL TRAVEL ----- .002 - .010

OVERTRAVEL ----- .156 MIN

**ELECTRICAL DATA**

CONTACT ARRANGEMENT  
**S P D T**

UL LISTED - FILE E12252  
CODE L189 10A-125, 250, 277 VAC  
1/8HP-125VAC; 1/4HP-250 VAC



SCALE **FULL**

DO NOT SCALE PRINT

**TOLERANCES**  
APPLY TO DESIGN UNITS. CONVERSIONS ARE ONLY FOR REFERENCE. UNLESS NOTED, TOLERANCES ARE ±

	DIM. mm	TOL. mm/in	DIM. in	TOL. mm/in
NO PLACES	X	1/.04		
ONE PLACE	X,X	0.47/.018	X,X	0.87/.03
TWO PLACES	X,X,X	0.167/.006	X,X,X	0.387/.015
THREE PLACES	X,X,X,X		X,X,X,X	0.137/.005

DESIGN UNITS  SI METRIC  US CUSTOMARY

WEIGHT **.073 LB**

FO-52848-A

DRAWN

S R H 22 NOV 72