

# MICRO SWITCH

FREERPORT ILLINOIS, U.S.A  
A DIVISION OF HONEYWELL INC.  
FED. MFG. CODE 91929

# SWITCH - BASIC

CATALOG LISTING

BZ-RW8435149-D6

M BZ-RW8435149-D6

REPLACES PR-16797

DRAWING NUMBER

ISSUE

4

REVISIONS

A	C068276	JAP	DEC 90
B	C080938	DLT	JUN 95
C	C082886	JALA	APR 96

CHECK

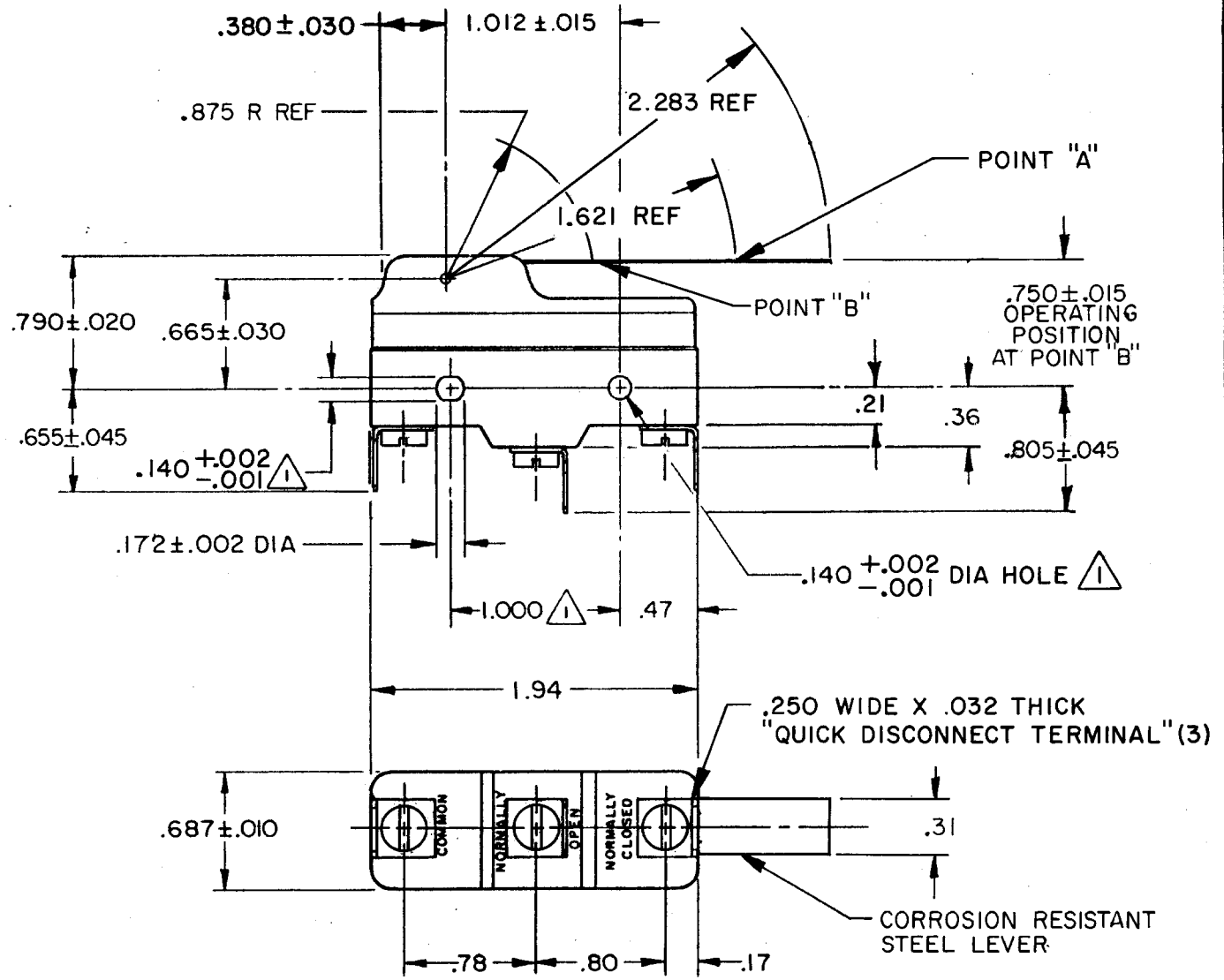
CHECK

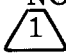
12 OCT 88

DcS

88

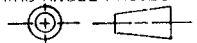
J A P10 OCT




**NOTE**  
 MOUNTING HOLES WILL ACCEPT PINS OR SCREWS OF  
 .139 MAX DIA ON 1.000 ± .002 CENTERS

THIS DRAWING COVERS A PROPRIETARY ITEM AND IS THE PROPERTY OF MICRO SWITCH, A DIVISION OF HONEYWELL. THIS DRAWING IS NOT TO BE COPIED OR USED WITHOUT THE APPROVAL OF MICRO SWITCH.

THIRD ANGLE PROJECTION



CHARACTERISTICS	POINT "A"
OPERATING FORCE	--- 6 GRAMS MAX
DIFFERENTIAL FORCE	--- 1/2 GRAMS MAX
DIFFERENTIAL TRAVEL	--- .006 MAX
OVERTRAVEL	--- .141 MIN

ELECTRICAL DATA
CONTACT ARRANGEMENT S P D T
L169
10A 125, 250, 277 VAC 1/8 HP 125 VAC, 1/4 HP 250 VAC


SCALE	FULL	DO NOT SCALE PRINT
UNLESS OTHERWISE SPECIFIED TOLERANCES ARE		
ONE PLACE	(.0)	± .030
TWO PLACE	(.00)	± .015
THREE PLACE	(.000)	± .005
ANGLES		±
WEIGHT	.073 LB	

FO-52848-B