

REPLACES X113039-BZ

CATALOG LISTING  
**BZ-RX122-A29**  
PAGE 1 OF 1

**M**  
ISSUE 4

CHECK

REVISIONS

A	203508	CSL	12 JUL 01
B	203541	TSM	20 JUL 01
C	207078	JAH	18 DEC 02

CHECK

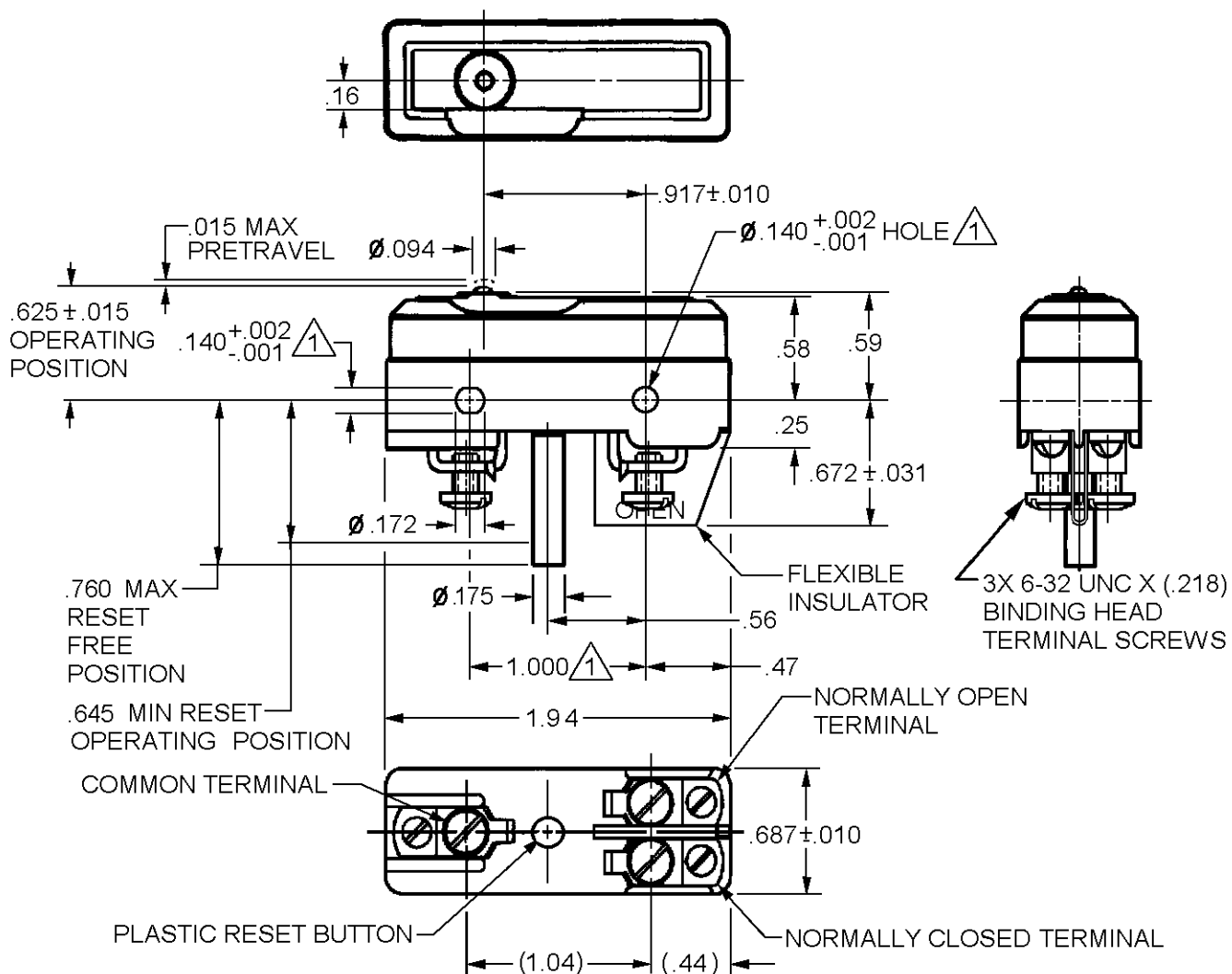
10 JAN 01

SAV

CHECK

10 JAN 01

DCS  
DRAWN

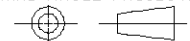


NOTE  
 $\triangle$  MOUNTING HOLES WILL ACCEPT PINS OR SCREWS OF  $\phi .139$  MAX ON  $1.000 \pm .002$  CENTERS

ANSI Y14.5M-1982 APPLIES

THIS DRAWING COVERS A PROPRIETARY ITEM AND IS THE PROPERTY OF MICRO SWITCH, A DIVISION OF HONEYWELL. THIS DRAWING IS NOT TO BE COPIED OR USED WITHOUT THE APPROVAL OF MICRO SWITCH.

THIRD ANGLE PROJECTION



CHARACTERISTICS	ELECTRICAL DATA	SCALE FULL	DO NOT SCALE PRINT
OPERATING FORCE ----- 7 - 10 OZ	CONTACT ARRANGEMENT S P D T MAINTAINED CONTACT	<p><b>UNLESS OTHERWISE SPECIFIED TOLERANCES ARE</b></p> <p>ONE PLACE (.0) ± .030</p> <p>TWO PLACE (.00) ± .015</p> <p>THREE PLACE (.000) ± .005</p> <p>ANGLES ±</p> <p>WEIGHT</p>	
OVERTRAVEL ----- .005 MIN	L144 15A 125, 250 OR 480 VAC		
RESET CHARACTERISTICS	1/4HP 125 VAC, 1/2HP 250 VAC		
OPERATING FORCE ----- 5 - 10 OZ	1/2A 125 VDC, 1/4A 250 VDC		
OVERTRAVEL ----- .015 MIN	2A 600 VAC		

