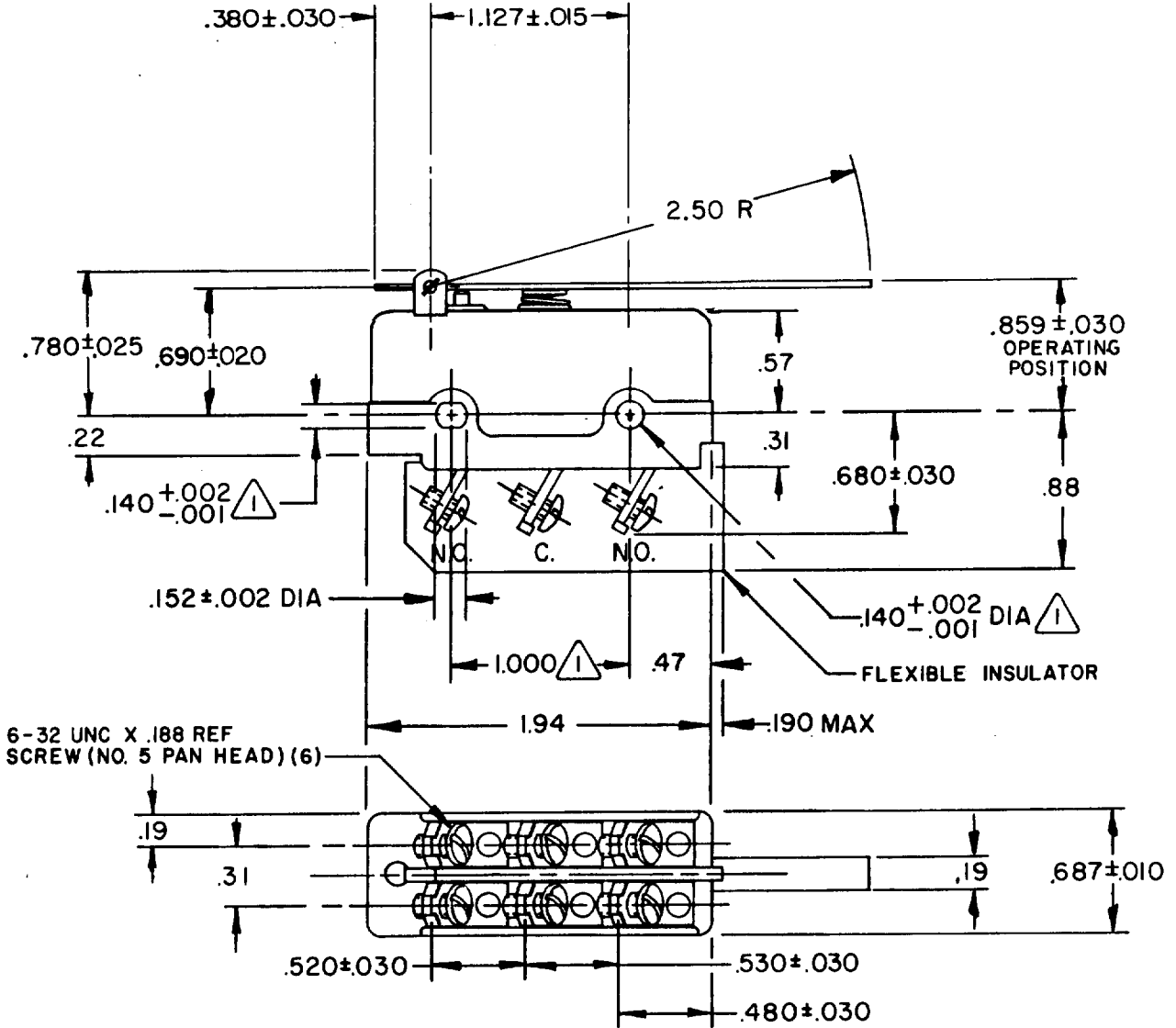


MICRO SWITCH
 FREEPORT ILLINOIS, U.S.A
 A DIVISION OF HONEYWELL
 FED. MFG. CODE 91929

SWITCH - BASIC

CATALOG LISTING
DT-2RV-B6

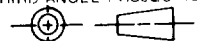
DT-2RV-B6
 M
 DRAWING NUMBER
 4
 ISSUE
 REVISIONS
 A RE-INST PR-6602 KSW 2 AUG 77
 DRAWN
 KSW 2 AUG 77
 CHECK
 CEB 3 AUG 77
 CHECK
 FO-52848-A



NOTE
 MOUNTING HOLES WILL ACCEPT PINS OR SCREWS OF .139 MAX DIA ON 1.000 ± .002 CENTERS

THIS DRAWING COVERS A PROPRIETARY ITEM AND IS THE PROPERTY OF MICRO SWITCH, A DIVISION OF HONEYWELL. THIS DRAWING IS NOT TO BE COPIED OR USED WITHOUT THE APPROVAL OF MICRO SWITCH.

THIRD ANGLE PROJECTION



CHARACTERISTICS

OPERATING FORCE ----- 3 1/2-6 OZ
 RELEASE FORCE ----- 1 OZ MIN
 PRETRAVEL ----- 1.000 MAX
 DIFFERENTIAL TRAVEL ----- .490-.755
 OVERTRAVEL ----- .062 MIN

ELECTRICAL DATA

CONTACT ARRANGEMENT
 D P D T

UL LISTED - FILE E12252
 10A-125 OR 250 VAC
 CODE L59 0.3A-125 VDC; 0.15A-250 VDC



SCALE FULL

DO NOT SCALE PRINT

TOLERANCES
 APPLY TO DESIGN UNITS. CONVERSIONS ARE ONLY FOR REFERENCE. UNLESS NOTED, TOLERANCES ARE ±

| DIM. | TOL. | DIM. | TOL. |
|--------------|-------|-----------|-----------------|
| mm | mm/in | in | mm/in |
| NO PLACES | X | 1/64 | |
| ONE PLACE | X,X | 0.4/0.16 | X X 0.8/0.3 |
| TWO PLACES | X,XX | 0.13/0.05 | X XX 0.36/0.15 |
| THREE PLACES | X,XXX | | X XXX 0.13/0.05 |
| ANGLES | | | |

DESIGN UNITS SI METRIC US CUSTOMARY

WEIGHT .080 LB