

**MICRO SWITCH**  
 A DIVISION OF MINNEAPOLIS-HONEYWELL REGULATOR COMPANY  
 FREEPORT, MINNESOTA  
 FED. MFR. CODE 91929

**ACTUATOR - SWITCH**

CATALOG LISTING  
**MCH2711A1**

(M) MCH2711A1  
 ISSUE 3

CATALOG LISTING

**MCH2711A1**

PAGE 1 OF 1

REPLACES

RELEASE NO.

**M**

ISSUE  
 12

CHECK

**REVISIONS**

A	CO	14888	
	KLB		14 NOV 60
B	CO	0015540	
	RER		28 JAN 61
C	CO	077988	
	DLT		17 JUN 64
D	CO	179303	
	SAD		6 MAR 65
E	CO	082567	
	GJW		8 MAR 66
F		203421	
	CSL		26 JUN 01
G		203596	
	CSL		31 JUL 01
H		0005508	
	PEH/AP		18 MAY 04
J		0005642	
	TCC/AP		26 MAY 04

CHECK

CHECK

CHECK

CHECK

CHECK

CHECK

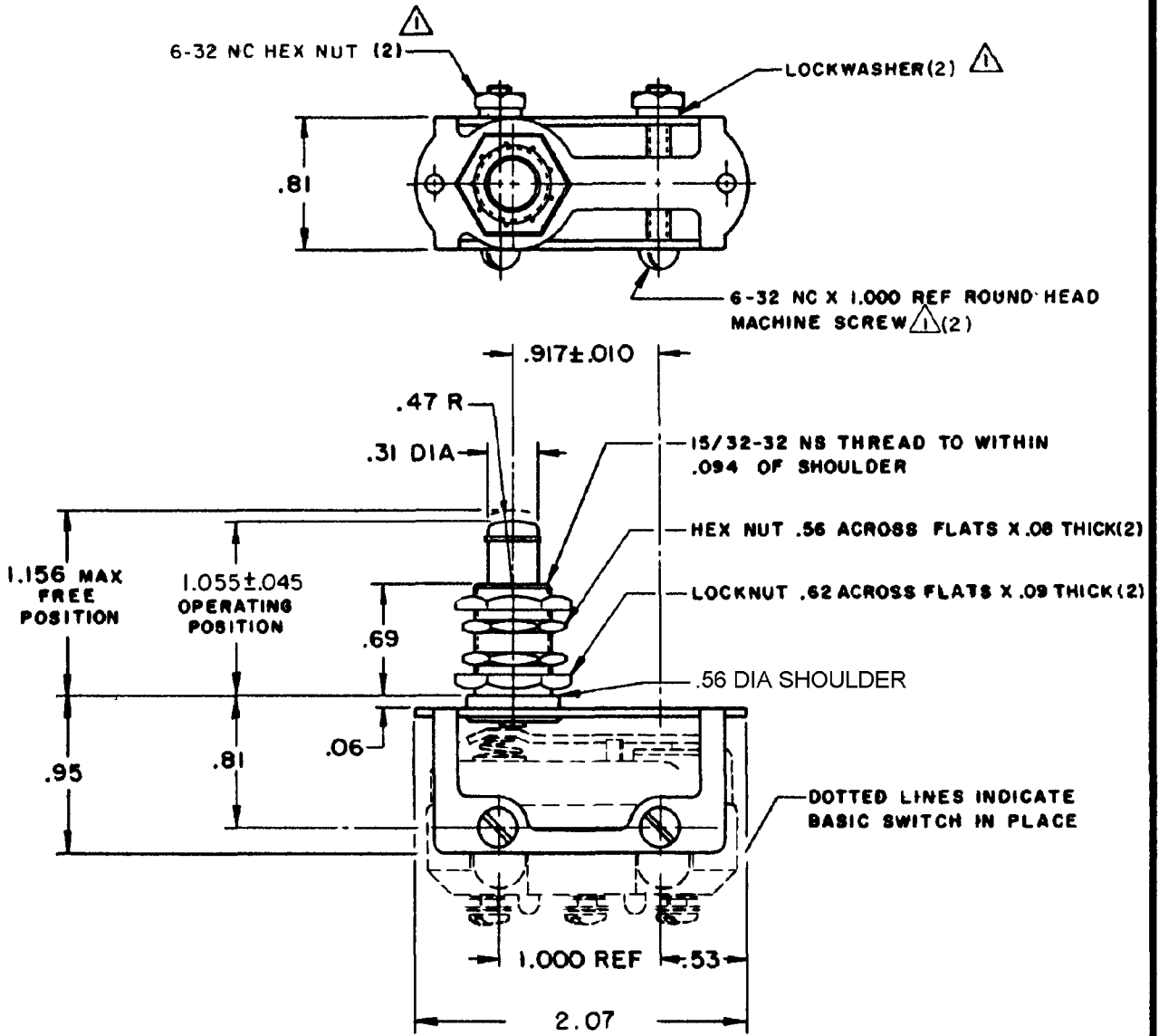
CHECK

CHECK

CHECK

CHECK

CHECK



**NOTE -**

- 1 - FURNISHED UNASSEMBLED
- 2 - ACTUATOR WILL PERFORM SATISFACTORILY IN TEMPERATURES TO MINUS 65 ° F
- 3 - WITH BZ - R31 SWITCHES IN PLACE

THIS DRAWING COVERS A PROPRIETARY ITEM AND IS THE PROPERTY OF MICRO SWITCH, A DIVISION OF MINNEAPOLIS-HONEYWELL REGULATOR CO. THIS DRAWING IS NOT TO BE COPIED OR USED WITHOUT THE APPROVAL OF MICRO SWITCH.

CHARACTERISTICS <span style="float: right;">3</span>	ELECTRICAL DATA		SCALE FULL
FULL OVERTRAVEL FORCE - - - - - 6 LB MAX	CONTACT ARRANGEMENT	BREAK DISTANCE	DO NOT SCALE PRINT
OVERTRAVEL - - - - - .188 MIN			UNLESS OTHERWISE SPECIFIED DIMENSIONS ARE IN INCHES <b>TOLERANCES ARE:</b>
			ONE PLACE (.0) ± .030 TWO PLACE (.00) ± .018 THREE PLACE (.000) ± .008 ANGLE ±
			WEIGHT

RASTER

FO-80378

DRAWN

K L B 14 NOV 60