

MICRO SWITCH

FREERPORT ILLINOIS, U.S.A
A DIVISION OF HONEYWELL
FED. MFG. CODE 91929

SWITCH-BASIC

CATALOG LISTING
MT-4RL14-D11

M MT-4RL14-D11

DRAWING NUMBER

3

ISSUE

REPLACES X 77836-MT

RELEASE NO. PR-12995

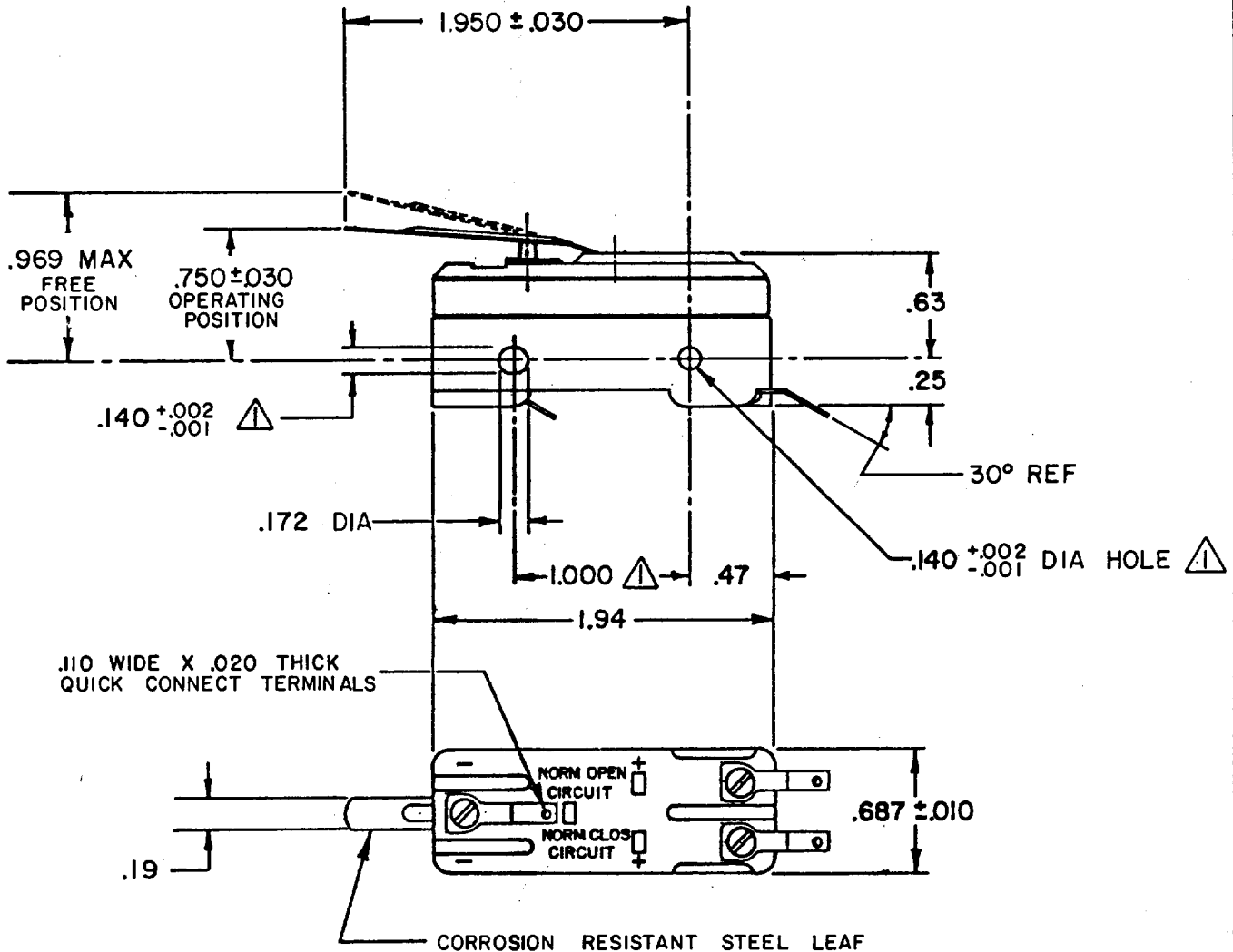
CHECK

CHECK

8 MAY 84

84 CHECK KAG

M A M 7 MAY 84 CHECK KAG

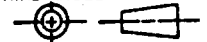


NOTES

- 1 MOUNTING HOLES WILL ACCEPT PINS OR SCREWS OF .139 MAX DIA. ON 1.000 ± .002 CENTERS
- 2 - FOR BEST RESULTS EITHER POLARIZE THE SWITCH WITH THE COMMON TERMINAL WIRED IN NEGATIVE POLARITY OR MOUNT THE SWITCH WITH BRASS SCREWS AND SPACE AT LEAST .250 AWAY FROM MAGNETIC MATERIALS

THIS DRAWING COVERS A PROPRIETARY ITEM AND IS THE PROPERTY OF MICRO SWITCH, A DIVISION OF HONEYWELL. THIS DRAWING IS NOT TO BE COPIED OR USED WITHOUT THE APPROVAL OF MICRO SWITCH.

THIRD ANGLE PROJECTION



CHARACTERISTICS

OPERATING FORCE ---- 12 OZ. MAX

RELEASE FORCE ----- 1 OZ. MIN

DO NOT OVERTRAVEL MORE THAN .060

ELECTRICAL DATA

CONTACT ARRANGEMENT
S P D T

NON-POLARIZED	VOLTS D-C 125 250	MOTOR 1/4 HP +	RESISTIVE 10 AMPS 1.5 TO 3.0 *
POLARIZED OR NON-MAGNETICALLY MOUNTED	VOLTS D-C 125 250	MOTOR 1/2 HP +	RESISTIVE 10 AMPS 1.5 TO 3.0 *

*NOT SUITABLE FOR USE AT LESS THAN 1.5 AMPS + WILL NOT BREAK LOCKED ROTOR CURRENT

L168 (NON-POLARIZED)

10A 125 VAC-DC 1/4 HP 125 VAC-DC

SCALE FULL

DO NOT SCALE PRINT

TOLERANCES
APPLY TO DESIGN UNITS. CONVERSIONS ARE ONLY FOR REFERENCE. UNLESS NOTED, TOLERANCES ARE 2

	DIM. mm	TOL. mm/in	DIM. in	TOL. mm/in
NO PLACES	X	17.04	X, X	0.27, 0.08
ONE PLACE	X, X	0.47, 0.15	X, X	0.307, 0.15
TWO PLACES	X, X, X	0.127, 0.05	X, X, X	0.127, 0.05
THREE PLACES	X, X, X, X		X, X, X, X	
ANGLES				

DESIGN UNITS METRIC US CUSTOMARY

WEIGHT .060 LB.

FO-52848-A

DRAWN