

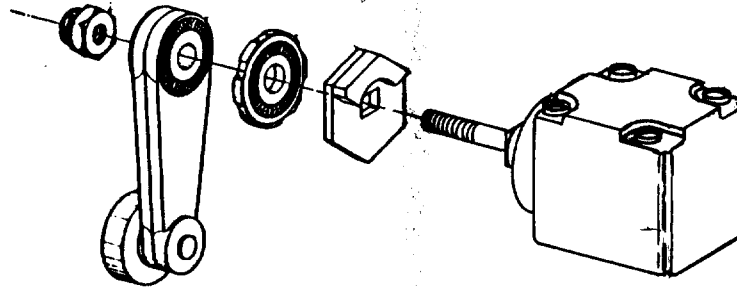
MICRO SWITCH

FREEPORT, ILLINOIS, U S A
A DIVISION OF HONEYWELL
FED. MFG. CODE 91929

PACKET

CATALOG LISTING
9PA14

THIS DRAWING COVERS A PROPRIETARY ITEM AND IS THE PROPERTY OF MICRO SWITCH, A DIVISION OF HONEYWELL. THIS DRAWING IS NOT TO BE COPIED OR USED WITHOUT THE APPROVAL OF MICRO SWITCH.



ADJUSTABLE TO OPERATE CLOCKWISE, COUNTER-CLOCKWISE, OR IN BOTH DIRECTIONS.

AS FACTORY ASSEMBLED THE SWITCH MAY BE ACTUATED BY EITHER CLOCKWISE OR COUNTER-CLOCKWISE MOVEMENT OF THE ROLLER ARM.

TO CONVERT THE SWITCH FOR ACTUATION EITHER CLOCKWISE OR COUNTER-CLOCKWISE DIRECTION ONLY: SLIDE THE CAM TOWARD THE REAR OF THE HEAD SUFFICIENTLY TO DISENGAGE FROM THE FLATS ON THE SHAFT. ROTATE THE CAM 90° IN THE OPPOSITE DIRECTION OF THE ACTUATION DESIRED AND RE-ENGAGE THE CAM WITH THE FLATS ON THE SHAFT.

NOTE: WHEN SWITCH IS ADJUSTED FOR OPERATION IN ONE DIRECTION ONLY, THE ARM MAY BE MOVED TO THE FULL OVERTRAVEL POSITION IN THE OPPOSITE DIRECTION WITHOUT DAMAGING THE MECHANISM OR OPERATING THE SWITCH.

M		9PA14		REPLACES	
DRAWING NUMBER		SR-3843		RELEASE NO.	
2		CHECK		CHECK	
ISSUE		CHECK		CHECK	
REVISIONS		CHECK		CHECK	
A 8		CHECK		CHECK	
52194-D		CHECK		CHECK	
K A G		CHECK		CHECK	
13 SEPT 83		CHECK		CHECK	
FO-82850		CHECK		CHECK	
DRAWN		CHECK		CHECK	
K A G		CHECK		CHECK	
13 SEPT 83		CHECK		CHECK	