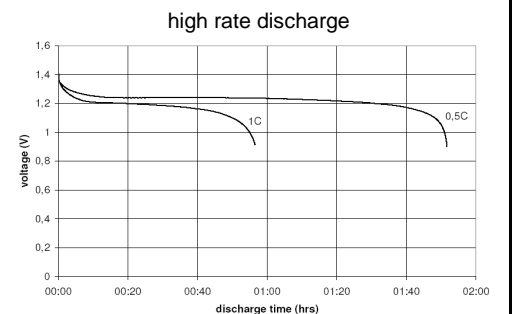
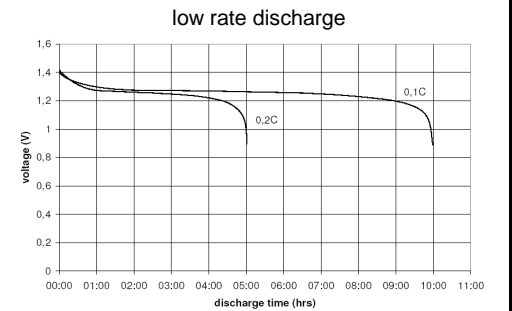
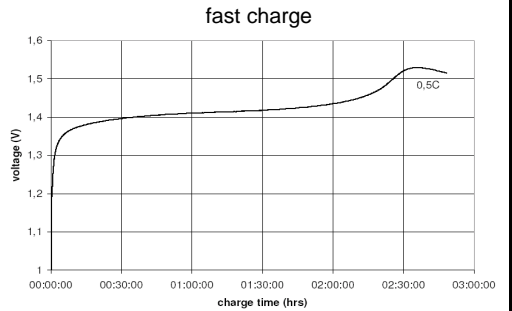
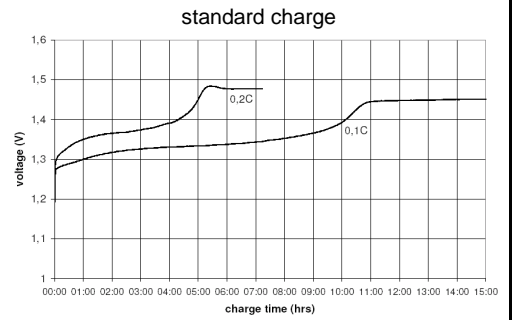


		Conditions	
<b>cell type:</b>		NiMH	
<b>cell size:</b>		AA	
<b>nominal voltage:</b>	1.2	V	at standard charge (0.1C / 20°C)
<b>max. charge voltage:</b>	1.5	V	
<b>capacity</b>			
nominal:	2100	mAh	discharge at 0.2C
minimum:	1900	mAh	discharge at 0.2C
	1750	mAh	discharge at 1C
			1.0V end discharge voltage
			ta: 20°C
<b>max. continuous discharge current:</b>	4000	mA	ta: 0...45°C
<b>charge</b>			
standard charge:	210	mA	14...16hrs
quick charge:	600	mA	4hrs
fast charge:	2100	mA	1.1hrs
recommended charge termination control parameters:	0...5	mV	- delta V
	0.8...1	°C	temperature rise per minute
	45...50	°C	TCO (temperature cut off)
trickle charge current:	10...40	mA	(recommended)
continuous overcharge: (less than 1 year)	≤ 200	mA	no conspicuous deformation no leakage
<b>internal resistance:</b> (impedance)	≤ 35	mΩ	at 1KHz battery fully charged
<b>life expectancy:</b>	≥ 500	cycles	acc. IEC standard
<b>self discharge</b>			
charge retention: (at ≤ 20°C ambient)	≥ 85	%	after 6 months storage
	≥ 80	%	after 12 months storage
<b>initial capacity:</b>	≥ 1400	mAh	within 30 days after delivery discharge at 0.2C
<b>ambient temperature range:</b>	0...45	°C	standard charge
	10...40	°C	fast charge
	- 20...55	°C	discharge
	- 20...50	°C	storage (≤3months)
	- 20...40	°C	storage (≤6months)
	- 20...30	°C	storage (≤24months)

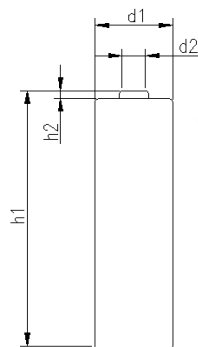
### Diagrams



QCT1: 20/1800/35  
QCT2: 30/1700/40

### mechanical specifications

cell dimensions (incl. label)			
diameter d1:		14.5	- 1.0 mm
diameter d2:	approx.	7.0	mm
height h1:		49.5	- 1.5 mm
height h2:	min.	0.5	- 0.5 mm
weight:		28	± 2 g



tags  
material: nickel  
length: 20mm  
width: 5mm  
thickness: 0.12mm



### ANSMANN Specifications for model:

data sheet no. / part no.

version no.

author / date

### AA - 2100mAh low self discharge flat head with tags (z-form)

5035371-01

0

TG / 20.09.2013