

ICC20 27D-FI-CRT

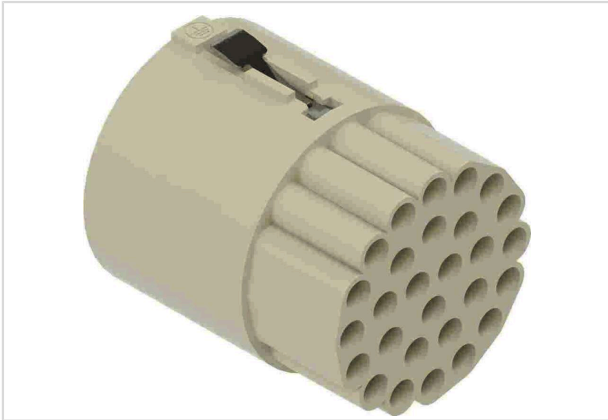


Image is for illustration purposes only. Please refer to product description.

Part number	19 59 020 2802
Specification	ICC20 27D-FI-CRT
HARTING eCatalogue	https://b2b.harting.com/19590202802

Identification

Category	Connectors
Series	HARTING ICC
Element	Inserts

Version

Termination method	Crimp termination
Gender	Female
Size	20
Number of contacts	28
Number of signal contacts	27
Number of special contacts	1
Specification of special contacts	PE contact
Details	Please order crimp contacts separately.

Technical characteristics

Conductor cross-section	0.14 ... 2.5 mm ²
Rated current	10 A
Rated voltage	300 V
Rated impulse voltage	4 kV
Pollution degree	3
Insulation resistance	>10 ¹⁰ Ω
Limiting temperature	-40 ... +125 °C



Pushing Performance
Since 1945

Technical characteristics

Mating cycles	≥500
---------------	------

Material properties

Material (insert)	Polycarbonate (PC)
Colour (insert)	RAL 7032 (pebble grey)
Material flammability class acc. to UL 94	V-0
RoHS	compliant
ELV status	compliant
China RoHS	e
REACH Annex XVII substances	Not contained
REACH ANNEX XIV substances	Not contained
REACH SVHC substances	Not contained
California Proposition 65 substances	Not contained

Specifications and approvals

Specifications	IEC 61984 IEC 60664-1
Approvals	CE

Commercial data

Packaging size	1
Net weight	0.019 kg
European customs tariff number	85389099
GTIN	5713140400542
eCl@ss	27440223 Contact insert for circular connectors