

**Description: 1608 2.4G&5GHz Diplexer**

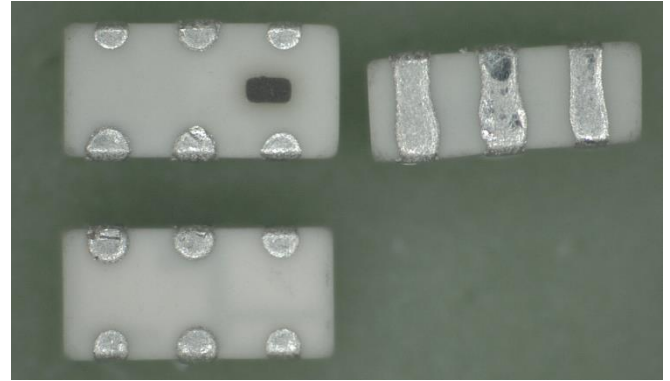
**PART NUMBER: DPX1608LKG9R2460A**

**Features:**

- Compact Size
- RoHS compliant

**Applications:**

- WiFi 6E



**ELECTRICAL SPECIFICATIONS**

**Low band**

Item	Frequency (MHz)	Min.	Typ.	Max.
Insertion Loss (dB)	2400~2500	-	1.08	1.30
Return Loss (dB)	2400~2500	10	28.3	-
Attenuation (dB)	700~1300	20	22.5	-
	4700~4900	30	42.4	-
	7100~7400	30	34.5	-

**High band**

Item	Frequency (MHz)	Min.	Typ.	Max.
Insertion Loss (dB)	5100~7300	-	1.06	1.30
Return Loss (dB)	5100~7300	10	11.2	-
Attenuation (dB)	1600~2000	26	29.2	-
	2300~3000	25	29.4	-
	10200~14500	25	31.2	-
	15400~21700	15	21.2	-

In the effort to improve our products, we reserve the right to make changes judged to be necessary.

CONFIDENTIAL AND PROPRIETARY INFORMATION

This document contains confidential and proprietary information of Pulse Electronics, Inc. (Pulse) and is protected by copyright, trade secret and other state and federal laws. Its receipt or possession does not convey any rights to reproduce, disclose its contents, or to manufacture, use or sell anything it may describe. Reproduction, disclosure or use without specific written authorization of Pulse is strictly forbidden.

For more information:



Pulse Worldwide Headquarters  
15255 Innovation Drive #100  
San Diego, CA 92128  
USA  
Tel:1-858-674-8100

Pulse/Larsen Antennas  
18110 SE 34<sup>th</sup> St Bldg 2 Suite 250  
Vancouver, WA 98683  
USA  
Tel: 1-360-944-7551

Europe Headquarters  
Pulse GmbH & Do, KG  
Zeppelinstrasse 15  
Herrenberg, Germany  
Tel: 49 7032 7806 0

Pulse (Suzhou) Wireless Products Co, Inc.  
99 Huo Ju Road(#29 Bldg,4<sup>th</sup> Phase  
Suzhou New District  
Jiangsu Province, Suzhou 215009 PR China  
Tel: 86 512 6807 9998

**Description:** 1608 2.4G&5GHz Diplexer

**PART NUMBER:** DPX1608LKG9R2460A

**ELECTRICAL SPECIFICATIONS**

**Common**

Item	Frequency (MHz)	Min.	Typ.	Max.
Return Loss (dB)	2400~2500	10	23.8	-
	5100~7300	10	11.2	-

Operating Temperature Range : -40~85°C

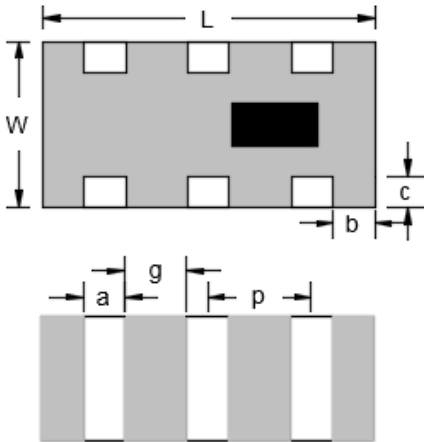
Power Capacity : 3W max.

Description: 1608 2.4G&5GHz Diplexer

PART NUMBER: DPX1608LKG9R2460A

MECHANICAL DIMENSION

Outline



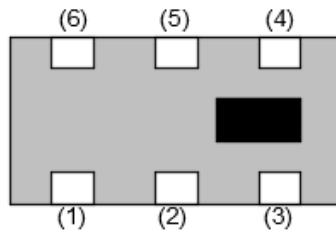
Dimension



L	W	T	a
1.60±0.10	0.80±0.10	0.70 max.	0.20±0.10
b	c	g	p
0.20±0.15	0.15±0.10	0.30±0.10	0.50±0.05

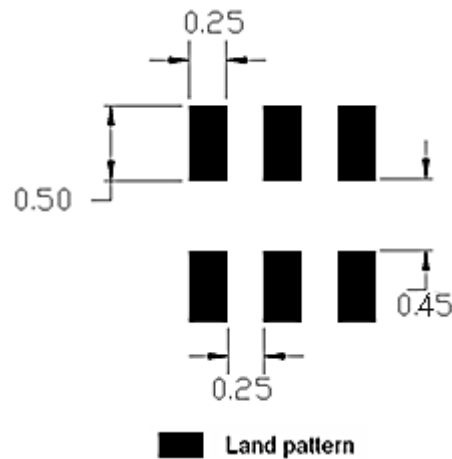
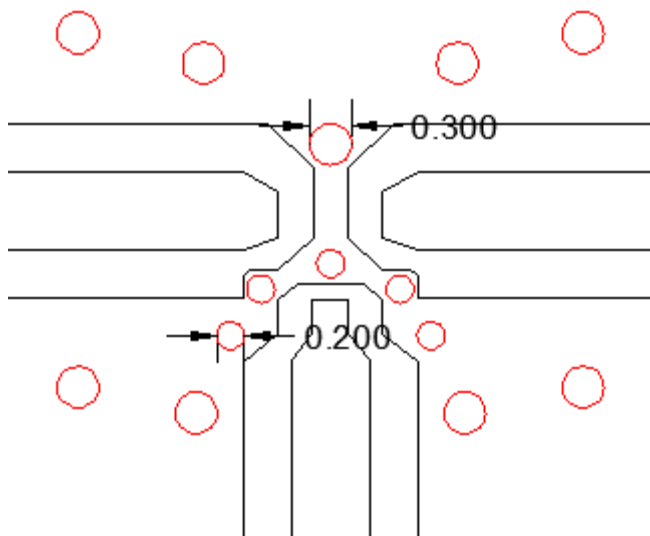
NOTE : Dimensions in mm.

Termination



Terminal name	Function
P1	GND
P2	Common
P3	GND
P4	High band
P5	GND
P6	Low band

Reference design of EVB



Unit : mm

\*Line width should be designed to match 50Ω characteristic impedance, depending on PCB material and thickness.

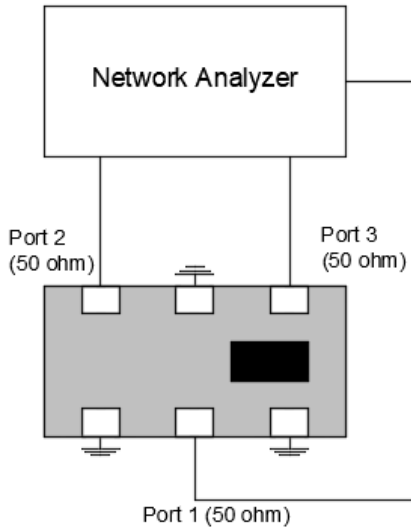
In the effort to improve our products, we reserve the right to make changes judged to be necessary.  
CONFIDENTIAL AND PROPRIETARY INFORMATION

This document contains confidential and proprietary information of Pulse Electronics, Inc. (Pulse) and is protected by copyright, trade secret and other state and federal laws. Its receipt or possession does not convey any rights to reproduce, disclose its contents, or to manufacture, use or sell anything it may describe. Reproduction, disclosure or use without specific written authorization of Pulse is strictly forbidden.

Description: 1608 2.4G&5GHz Diplexer

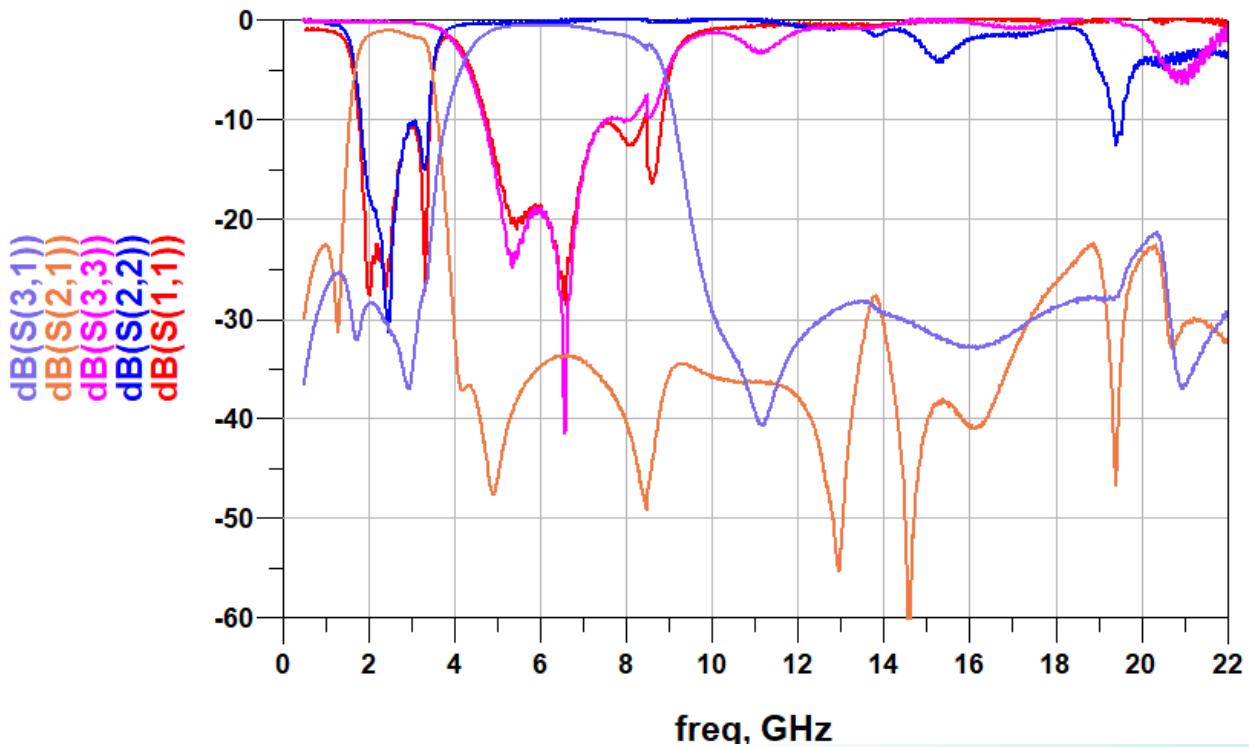
PART NUMBER: DPX1608LKG9R2460A

MEASURING DIAGRAM



Test Instrument :  
Agilent E5071C Network Analyzer or equivalent.

ELECTRICAL PERFORMANCES



In the effort to improve our products, we reserve the right to make changes judged to be necessary.  
CONFIDENTIAL AND PROPRIETARY INFORMATION

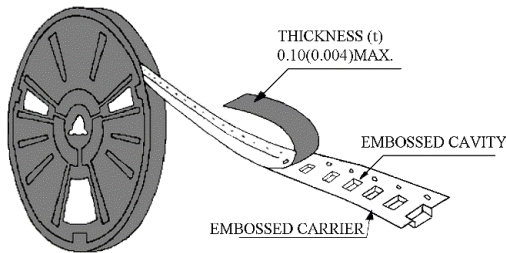
This document contains confidential and proprietary information of Pulse Electronics, Inc. (Pulse) and is protected by copyright, trade secret and other state and federal laws. Its receipt or possession does not convey any rights to reproduce, disclose its contents, or to manufacture, use or sell anything it may describe. Reproduction, disclosure or use without specific written authorization of Pulse is strictly forbidden.

Description: 1608 2.4G&5GHz Diplexer

PART NUMBER: DPX1608LKG9R2460A

**PACKING SPECIFICATION**

**Peel-off force**



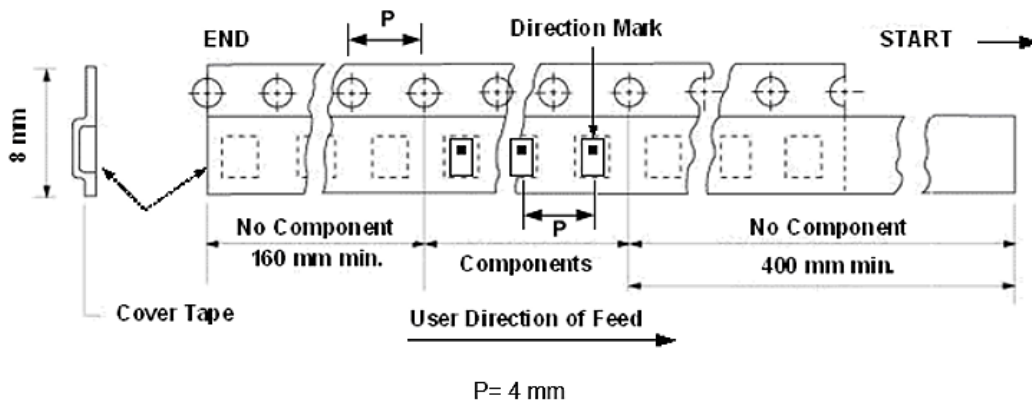
The force for peeling of cover tape is 10 grams in the arrow direction.

**Dimension (Unit: mm)**

TYPE	A	B	C	D	E	F
8 mm	178±1	60+0.5 -0	-	13±0.2	9±0.5	12±0.5
12 mm	178±0.3	60±0.2	19.3±0.1	13.5±0.1	13.6±0.1	-

**Taping quantity**

SERIES	5824 5724	5320 5220	4532	4516	3225	3216 2520	2012 1608	1005 0605
PCS/Reel	5000	3000	1000	2000	2500	3000	4000	10000



In the effort to improve our products, we reserve the right to make changes judged to be necessary.  
CONFIDENTIAL AND PROPRIETARY INFORMATION

This document contains confidential and proprietary information of Pulse Electronics, Inc. (Pulse) and is protected by copyright, trade secret and other state and federal laws. Its receipt or possession does not convey any rights to reproduce, disclose its contents, or to manufacture, use or sell anything it may describe. Reproduction, disclosure or use without specific written authorization of Pulse is strictly forbidden.

**Description: 1608 2.4G&5GHz Diplexer****PART NUMBER: DPX1608LKG9R2460A****REVISION HISTORY**

Revision	Date	Description
version 1	Aug. 02, 2023	- New issue