



Features

- Secure high performance push pull self-locking system
- Unique half-moon design for blind-mated
- High pin density contributing to equipment miniaturization
- 360°C EMC shielded
- Robust and shock resistant designs
- Functional in a wide temperature range from -50°C to +250°C
- Available solder, PCB and right angle PCB contact

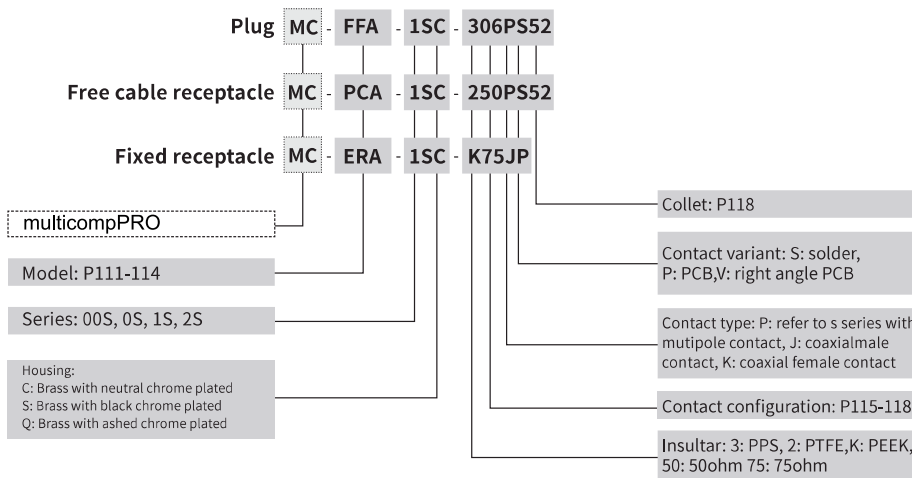
Technical Characteristics

Characteristics	Value	Standard
Endurance	>5000 Cycle	IEC 60512-5 test 9a
Humidity	Up to 95% at 60°C	
Temperature Range	-55°C to +250°C	
Resistance to Vibration	10-2000Hz, 15g	IEC 60512-4 test 6d
Shock Resistance	100g,6ms	IEC 60512-4 test 6c
Salt Spray Corrosion Test	>96h	IEC 60512-6 test 11f
Protection Index (mated)	IP50	IEC 60529
Climactic Category	55/175/21	IEC 60068-1

Electrical

Characteristics	Value	Standard
Shielding Efficiency	at 10MHz	>75dB
	at 1GHz	>40dB

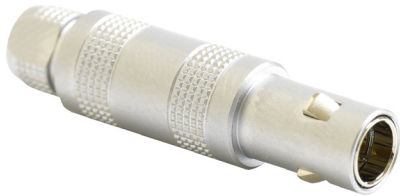
Part Number Explanation



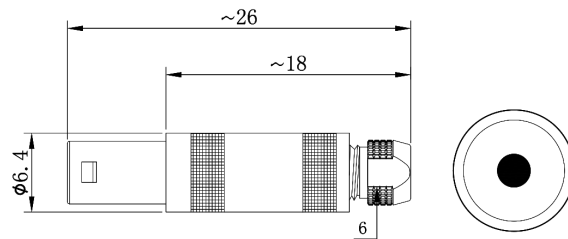
Push Pull Self-locking Connectors

MCFFA Series - Cable Mount Straight Plug

MCFFA00SC250JS32



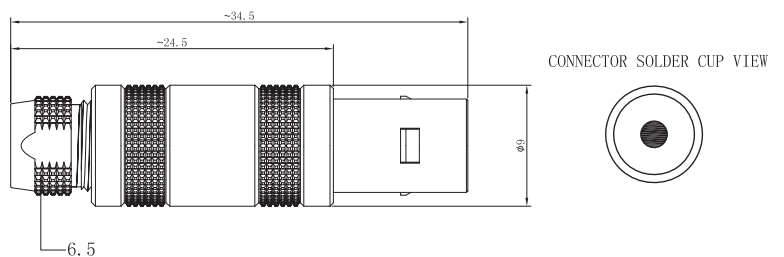
Diagram



MCFFA0SC250JS42



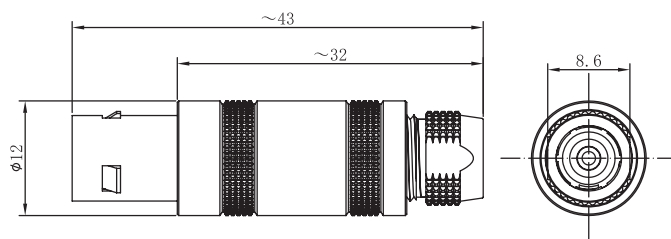
Diagram



MCFFA0SC250JS42



Diagram

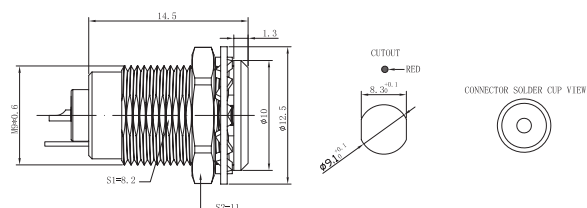


MCERA Series - Panel Mount Fixed Receptacle, Nut fixing, with earthing tag

MCERN0SC250KS



Diagram



Dimensions : Millimetres

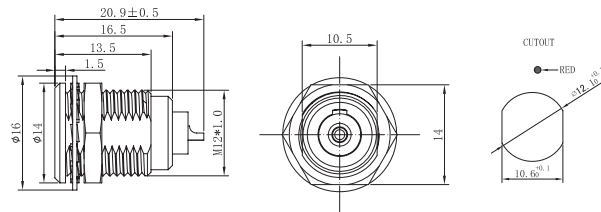
Push Pull Self-locking Connectors



MCERA1SC250KS

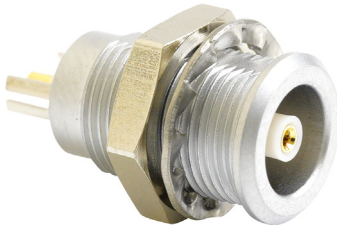


Diagram

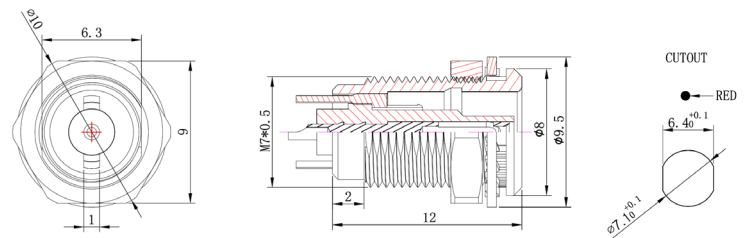


MCERA Series - Panel Mount Receptacle

MCERN00SC250KS

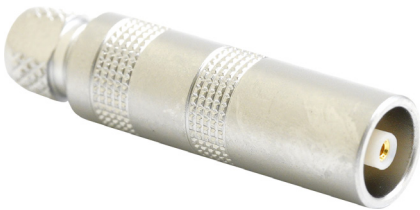


Diagram

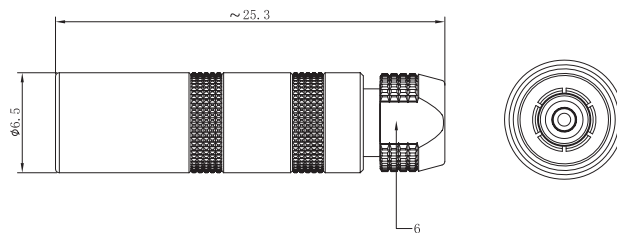


MCPCA Series - Cable Mount Receptacle

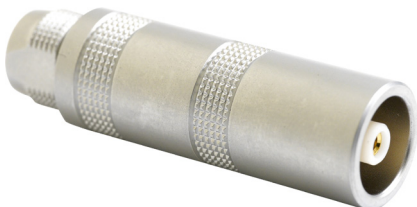
MCPCA00SC250KS32



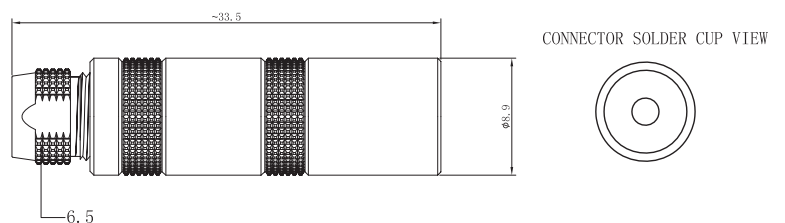
Diagram



MCPCA0SC250KS42



Diagram

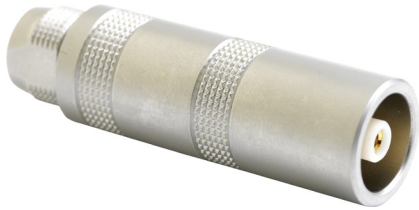


Dimensions : Millimetres

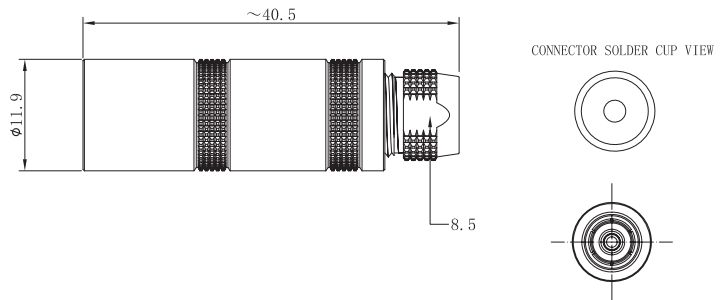
Newark.com/multicomp-pro
 Farnell.com/multicomp-pro
 sg.element14.com/b/multicomp-pro



MCPCA1SC250KS52



Diagram



Part Number Table

Description	Part Number
Circular Connector, Cable Mount Straight Plug, 26mm	MCFFA00SC250JS32
Circular Connector, Cable Mount Straight Plug, 34.5mm	MCFFA0SC250JS42
Circular Connector, Cable Mount Straight Plug, 43mm	MCFFA0SC250JS42
Panel Mount Fixed Receptacle, Nut fixing, with earthing tag, M9×0.6	MCERN0SC250KS
Panel Mount Fixed Receptacle, Nut fixing, with earthing tag, M12×1	MCERA1SC250KS
Panel Mount Receptacle, M7×0.5	MCERN00SC250KS
Cable Mount Receptacle, 25.3mm	MCPFA00SC250KS32
Cable Mount Receptacle, 33.5mm	MCPFA0SC250KS42
Cable Mount Receptacle, 40.5mm	MCPFA1SC250KS52

Dimensions : Millimetres

Important Notice : This data sheet and its contents (the "Information") belong to the members of the AVNET group of companies (the "Group") or are licensed to it. No licence is granted for the use of it other than for information purposes in connection with the products to which it relates. No licence of any intellectual property rights is granted. The Information is subject to change without notice and replaces all data sheets previously supplied. The Information supplied is believed to be accurate but the Group assumes no responsibility for its accuracy or completeness, any error in or omission from it or for any use made of it. Users of this data sheet should check for themselves the Information and the suitability of the products for their purpose and not make any assumptions based on information included or omitted. Liability for loss or damage resulting from any reliance on the Information or use of it (including liability resulting from negligence or where the Group was aware of the possibility of such loss or damage arising) is excluded. This will not operate to limit or restrict the Group's liability for death or personal injury resulting from its negligence. Multicomp Pro is the registered trademark of Premier Farnell Limited 2019.