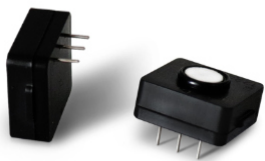




SGX

SENSORTECH

An Amphenol Company



PS1-O2-25%



PS4-O2-25%

Oxygen sensor Datasheet

SGX Solid Polymer Electrolyte Gas Sensors

The SGX series of PS1 and PS4 Electrochemical gas sensors are using a revolutionary 'Solid Polymer Electrolyte' technology that is based on the principle of catalytic reaction. The target gas to be measured generates a very small current, proportional to the gas concentration. Our technology offers a stable, high quality and cost-effective manufacturing process. The SGX solid polymer electrolyte gas sensors are available in a very small size, are highly sensitive, do not use power and have very low cross sensitivity from other gases.



Quality, Safety, Responsibility

Technical Specifications

Performance

Sensitivity	0.23 ± 0.04 nA / ppm
Measurement Range	0 – 25 %vol
Zero Current (in air)	40-60 µA
Maximum Overload	30 %vol
Response Time	T50 < 5s, T90 < 10s
Lower Detectable Limit (LDL)	≤ 0.5 %vol
Resolution (16Bit ADC)	0.01 %vol

Environmental Details

Temperature Range	-20°C to +55°C
Pressure Range	800 to 1200 hPA
Operating Humidity Range	15-95% RH
Storage Temperature	0 to 20°C

Lifetime Details

Long-Term Drift	< 1 %/month
Expected Lifetime	> 5 years
Zero Drift in Clean Air	< 0.2 %vol
Storage conditions	0-20°C
Storage Life	12 months

Operation

Operating Principle	Amperometric, 3-electrode
Bias Voltage	-400 to -600 mV
Recommended Load Resistor	220 Ω
Warm Up Time	< 15 min

Housing

Housing Material	PPO
Weight	PS1-O2-25% < 0.7g PS4-O2-25% < 6g



Features

- Response time typically 4s
- Small size
- Wide temperature range
- Capillary sensor
- Lead free
- Low power consumption
- 400-600 mV bias voltage



Key applications

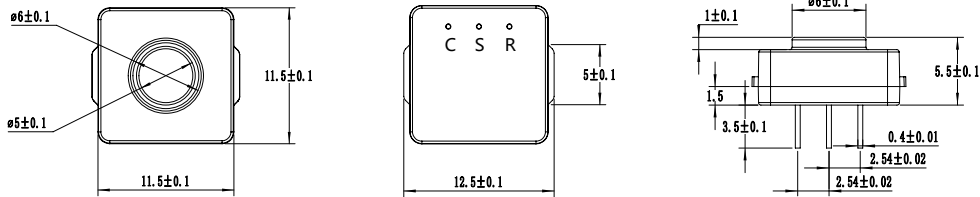
- Medical
- Industrial
- Combustion Control
- Food Industry
- General Gas Detection



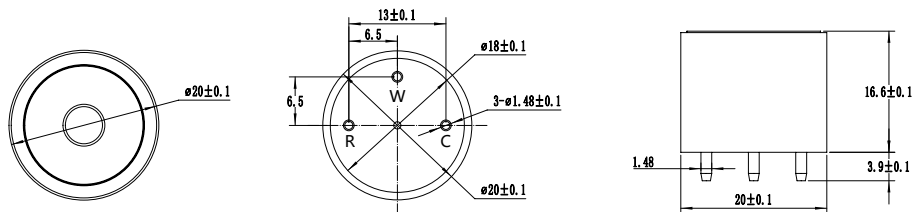
Important Notes

- All performance is based on conditions at 20°C, 50% RH and 1 atm, flow rate > 150 qcm/min, using SGX recommended circuitry.
- Sensor performance is temperature dependant; please contact SGX for temperature performance other than 20°C.
- Do not solder to the connector pins as this may damage the sensor and thereby invalidate the warranty.
- Details on recommended connector pins can be found in the Frequently Asked Questions within the Gas Sensor section of the SGX website.

Dimensions



PS1-O2-25%



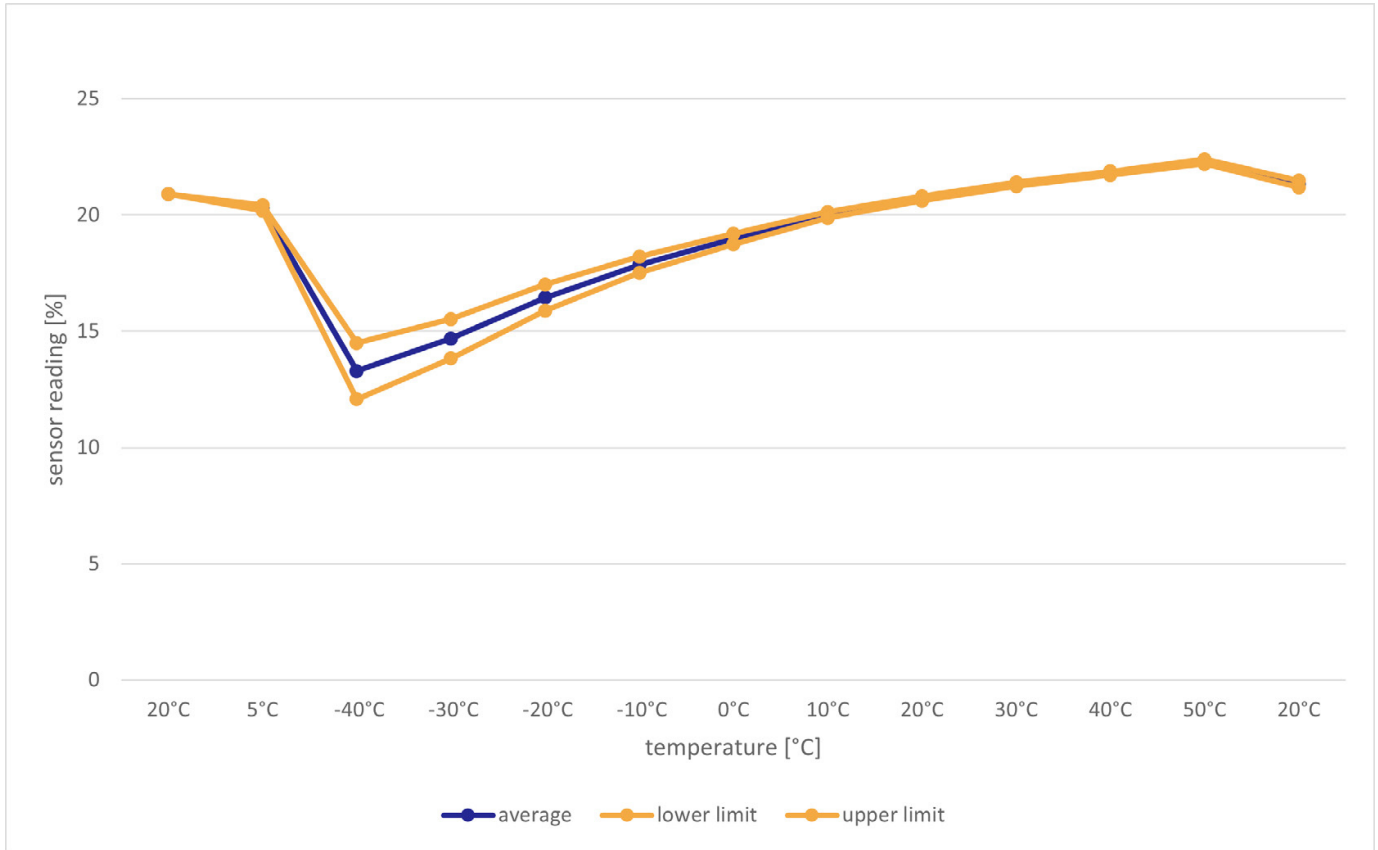
PS4-O2-25%

Cross Sensitivity

Gas	Formula	Test Concentration	Sensor Reading
Benzene	C ₆ H ₆	1ppm	0ppm
Carbon Dioxide	CO ₂	10%	0ppm
Formaldehyde	HCHO	1ppm	0ppm
Hydrogen Sulfide	H ₂ S	1ppm	0ppm
Methane	CH ₄	1%	0ppm
Nitrogen Dioxide	NO ₂	1ppm	0ppm
Ozone	O ₃	0.25ppm	0ppm

- Note:**
- 1) The above interference factors may vary due to different sensors and service life, please refer to the actual test results.
 - 2) This table is not complete for all cross gases. Please contact us for other gases.
 - 3) The above parameters are the test results at a temperature of 25°C, a relative humidity of 50%RH and a normal pressure environment. The performance of the sensor varies under different environmental conditions. If you have any questions, please contact us.
 - 4) The above cross interferences are represented by a low concentration of the gas.

Temperature Curve



DISCLAIMER:

SGX Europe Sp. z o.o. reserves the right to change design features and specifications without prior notification. We do not accept any legal responsibility for customer applications of our sensors. SGX Europe Sp. z o.o. accepts no liability for any consequential losses, injury or damage resulting from the use of this document, the information contained within or from any omissions or errors herein. This document does not constitute an offer for sale and the data contained is for guidance only and may not be taken as warranty. Any use of the given data must be assessed and determined by the user thereof to be in accordance with federal, state and local laws and regulations. All specifications outlined are subject to change without notice.

SGX Europe Sp. z o.o. sensors are designed to operate in a wide range of harsh environments and conditions. However, it is important that exposure to high concentrations of solvent vapours is to be avoided, both during storage, fitting into instruments and operation. When using sensors on printed circuit boards (PCBs), degreasing agents should be used prior to the sensor being fitted. SGX Europe Sp. z o.o. makes every effort to ensure the reliability of its products. Where life safety is a performance requirement of the product, we recommend that all sensors and instruments using these sensors are checked for response to gas before use.

Copyright© 2012-2024 SGX Sensortech All rights reserved.

Trademarks and registered trademarks are the property of their respective owners.

No part of this publication may be reproduced, distributed, or transmitted in any form or by any means, including photocopying, recording, or other electronic or mechanical methods, without the prior written permission of the publisher, except in the case of brief quotations embodied in critical reviews and certain other non-commercial uses permitted by copyright law.

For permission requests or technical support please contact or write to the publisher, addressed "Attention: Permissions Coordinator."