

# TA241911



Sample image

**Order symbol :** TA241911

**Product nr :** 5814002

**Description :** Enclosure, ABS

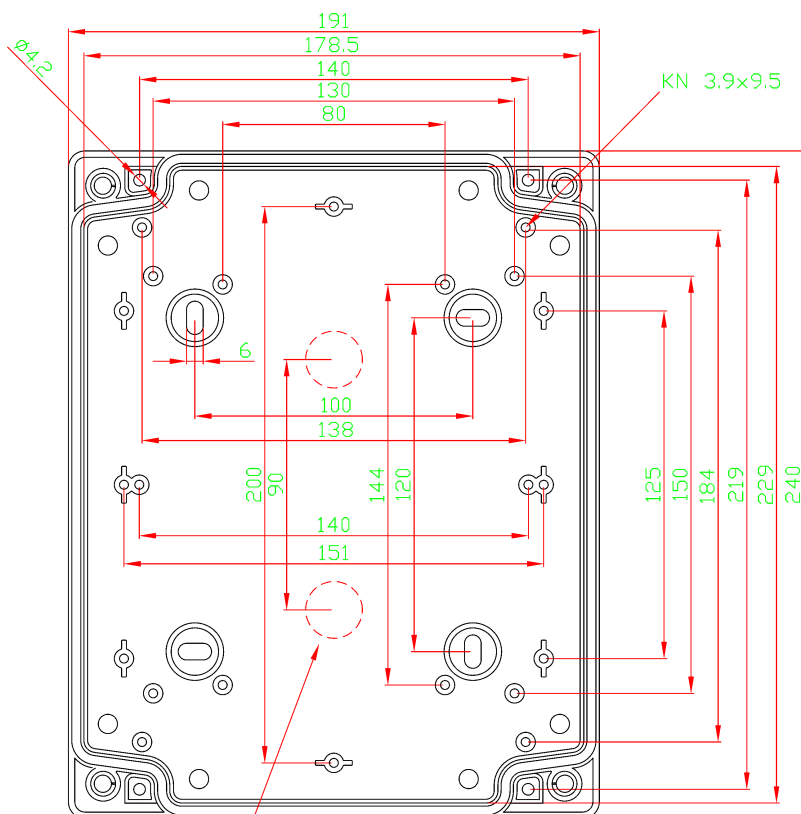
**Remarks :** Grey cover

**EAN :** 6418074060747

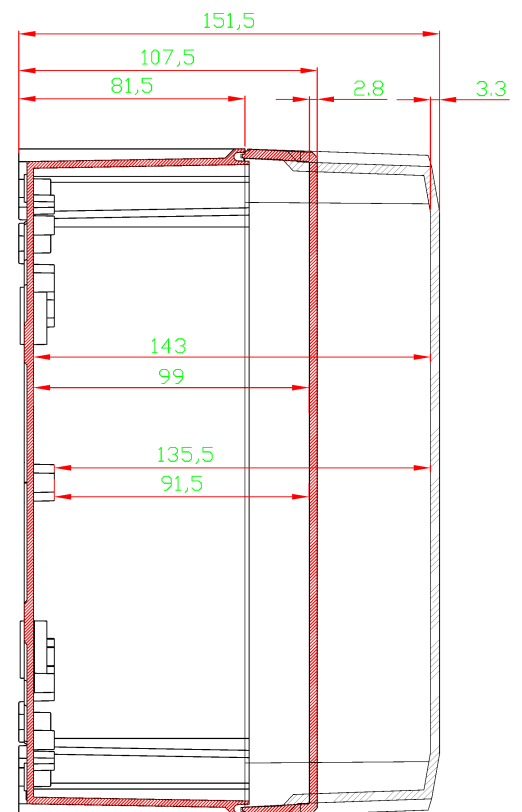
**El. number :**

- Finland : 3435686
- Denmark : 8212035043
- Sweden : 5814002

**Including :** Base with PUR gasket and screws for mounting plate/DIN-rail. cover with polyamide cover screws and plastic hinges.



2xM20 knock out



**Dimensions :**

	Height	Width	Depth
mm :	240	191	107
inch :	9.45	7.52	4.21

**Materials :**

Material : ABS

**Temperatures :**

Temperature °C (short term) :	-40 ... 80
Temperature °C (continuous) :	-40 ... 60
Temperature °F (short term) :	-40 ... 175
Temperature °F (continuous) :	-40 ... 140

**Accessories :**

MP 2419	Mounting plate, for enclosures: (210 x 160 x 1)
EKV 12	DIN-35 Mounting rail, for enclosures: (160 x 35 x 7)
DR 210	DIN-35 Mounting rail, for enclosures: (210 x 35 x 7)
FP 10674	Wall fastening lug (2 pcs) incl. screws (40 x 88 x 14)

**Ratings :**

Ingress protection (EN 60529):	IP65;
Impact Resistance (EN 62262):	IK07;
electrical_insulation :	Totally insulated
Halogen free (DIN/VDE 0472, Part 815) :	Yes
UV resistance :	-
Flammability Rating :	UL 94 HB
Glow Wire Test (IEC 695-2-1) °C :	650C

**Certificates :**

Certificate FI 40343