

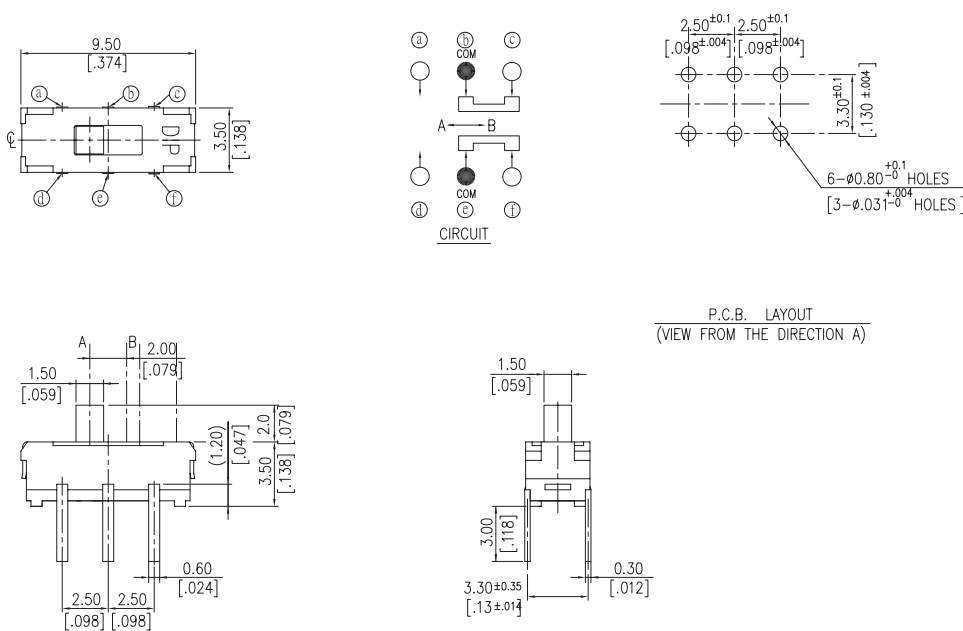
Slide Switch

**RoHS
Compliant**

Specification

General tolerances : $\pm 0.2\text{mm}$ [.008].

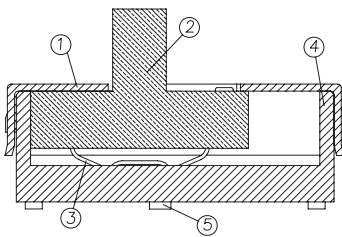
Diagram



Dimensions : Millimetres (Inches)

Item	Description	Q'ty	Materials	Treatment
1	Cover	1	Stainless Steel	--
2	Stem		High - Temp Thermoplastic Nylon UL94V - 0	Molded Black
3	Contact		Phosphor Bronze	With Silver Plating
4	Base		High-Temp Thermoplastic LCP	Molded Black
5	Terminal		Brass	With Silver Plating

Slide Switch



1. Style

This specification describes "DUAL IN-LINE PACKAGE SWITCHES" mainly used as signal switch of electric devices with the general requirements of mechanical and electrical characteristics.

1.1 Operating Temperature Range : -10°C to +60°C

1.2 Storage Temperature Range : -20°C to +75°C

1.3 The shelf life of product is within 6 months.

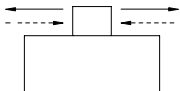
2. Current Range:

2.1 Non-Switching : 100mA, 50V DC

2.2 Switching : 0.1A , 12V DC

3. **Type of Actuation:** Actuated by sliding

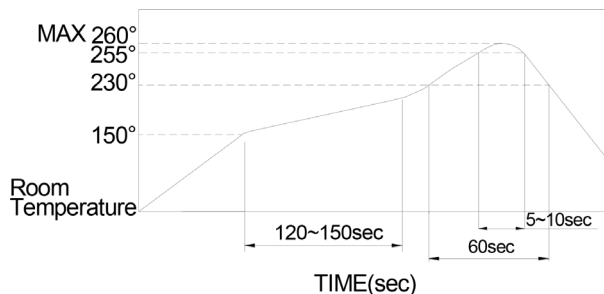
4. Test Sequence:

Item	Description	Test Conditions	Requirements
Appearance			
1	Visual Examination	By visual examination check without any out pressure & testing.	There shall be no defects that affect the serviceability of the product.
Electric Performance			
2	Contact Resistance	1. To be measured between the two terminals associated with each switch pole. 2. Measurements shall be made with a 1kHz shall current contact resistance meter.	60mΩ max. (initial)
3	Insulation Resistance	500V DC, 1 minute ± 5 sec.	100MΩ Min.
4	Withstanding Voltage	500V AC (50Hz or 60 Hz) shall be applied between all the adjacent terminals and between the terminal and the frame for 1 minute.	No dielectric breakdown shall be occurred
5	Capacitance	1 MHz ±10 kHz	5 pF max.
Mechanical Performance			
6	Operation Force	Applied in the direction of operation. 	200±150gf

Slide Switch

Mechanical Performance			
7	Stop Strength	(a)The static load of 2 kg shall be applied in the operating direction of the control unit for 15 seconds. (b)The static load of 1 kg shall be applied in the right angle of the operating direction unit for 15 seconds.	There shall be no sign of electrical function out of order or damage.
8	Soldering Heat Resistance	1. Soldering Temperature TEMP TIME 260°C±5°C 3±1 sec. 2. Duration of Solder Immersion: 5±1 sec. 3. Frequency of Soldering Process: 2 times max.	As shown in item 2~6
9	Solderability	1. THROUGH HOLE TYPE Soldering Temperature:245±3°C Lead-Free solder: M705E JIS Z 3282 Class A (Tin 96.5%, Silver 3%, Copper 0.5%) (Flux: 5-10 seconds. (Duration of solder Immersion: 5±1 sec. (SMT TYPE SEE PAGE 3/4	No anti-soldering and the coverage of dipping into solder must more than 75% was requested.
Durability			
10	Operation Life	Measurements shall be made following the test set forth below: 1)25 mA, 24V DC resistive load 2)Rate of Operation: 15~20 cycles/ minute 3)Cycle of Operation: 10,000 cycles.	1) As shown in item 3,4 2) Contact Resistance: 120mΩ max. (final-after test)
Weather-Proof			
11	Resistance Low Temperature	Following the test set forth below the sample shall be left in normal temperature and humidity conditions for an hour before measurements are made : 1. Temperature : -20°C ±2°C 2. Time: 96 hours	1. As shown in item 2~5 2. Operating Force: Within ±30% of item 6
12	Resistance High Temperature	Following the test set forth below the sample shall be left in normal temperature and humidity conditions for an hour before measurements are made : 1) Temperature : 85°C±2°C 2) Time: 96 hours	1.As shown in item 3~6 2. Contact Resistance: 120mΩ max.
13	Resistance Humidity	Following the test set forth below the sample shall be left in normal temperature and humidity conditions for an hour before measurements are made : 1) Temperature : 40°C±2°C 2) Relative Humidity :90~95% 3) Time: 96 hours	1.As shown in item 4,6 2.Contact Resistance: 120mΩ max. 3.Insulation Resistance : 10MΩ min.

Soldering Conditions



- The condition mentioned above is the temperature on the Cu foil of the P.C.B surface. There are cases where board's temperature greatly differs from switch's surface temperature depending on board's material, size, thickness, etc. Care, therefore, should be used not to allow switch's surface temperature to exceed 260°C.

- Manual Soldering

Soldering Temperature Max.350°C
 Continuous Soldering Time Max. 5 seconds

Part Number Table

Description	Part Number
Slide Switch, Vertical Through Hole, 2P2T	MPLSSA22-V
Slide Switch, Vertical, SMT, 2P2T	MPLSSAM22-V-T/R

Important Notice : This data sheet and its contents (the "Information") belong to the members of the AVNET group of companies (the "Group") or are licensed to it. No licence is granted for the use of it other than for information purposes in connection with the products to which it relates. No licence of any intellectual property rights is granted. The Information is subject to change without notice and replaces all data sheets previously supplied. The Information supplied is believed to be accurate but the Group assumes no responsibility for its accuracy or completeness, any error in or omission from it or for any use made of it. Users of this data sheet should check for themselves the Information and the suitability of the products for their purpose and not make any assumptions based on information included or omitted. Liability for loss or damage resulting from any reliance on the Information or use of it (including liability resulting from negligence or where the Group was aware of the possibility of such loss or damage arising) is excluded. This will not operate to limit or restrict the Group's liability for death or personal injury resulting from its negligence. Multicomp Pro is the registered trademark of Premier Farnell Limited 2019.