



## Oscar 420

2G/3G/4G/5G & WIFI MIMO 2-PORT OMNIDIRECTIONAL ANTENNA

### Key Features

- Weatherproof and UV Resistant
- MIMO Antenna
- 5 dBi Peak Gain



### General Description

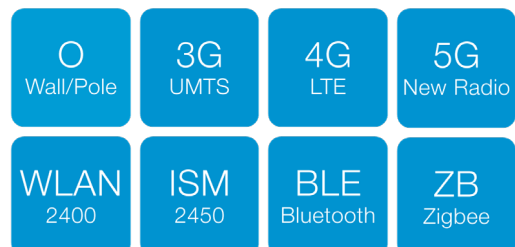
The Oscar 420 is a great antenna covering many popular frequencies in use today. Its radome is UV and water resistant making it a great outdoor antenna.

Fitted with 0.4M RG58 cable tails ready for connection to standard or low loss cable for extended distance to the Transmitter/Receiver.

The Oscar 420 is fitted with an aluminium bracket for wall mounting and comes supplied with a clamp for fitting to a standard mast.

### Additional Considerations

- Water and UV resistant
- Covers a wide range of frequencies





## Oscar 420

2G/3G/4G/5G & WIFI MIMO 2-PORT OMNIDIRECTIONAL ANTENNA

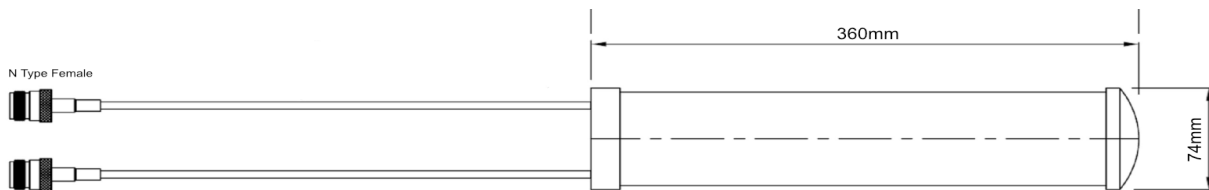
### Electrical Specifications

Impedance:	50 Ohms
Temperature range:	-30 - +70°C
VSWR:	<=3
Frequency Range:	700-960 MHz 2dBi 1700-2700 MHz 5dBi 3300-4200 MHz 5dBi
Polarisation:	Vertical
Wind Load:	120 Km/h

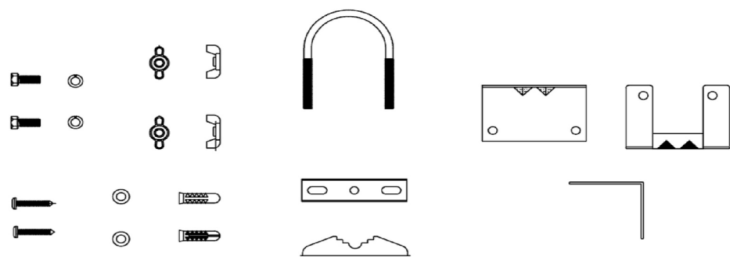
### Mechanical Specifications

Dimensions:	L360 x 74mm Ø
Connector:	N Female x2
Cable:	RG58
Mounting method:	Pole U-bolt

### Drawing



#### Accessories



### Ordering Details

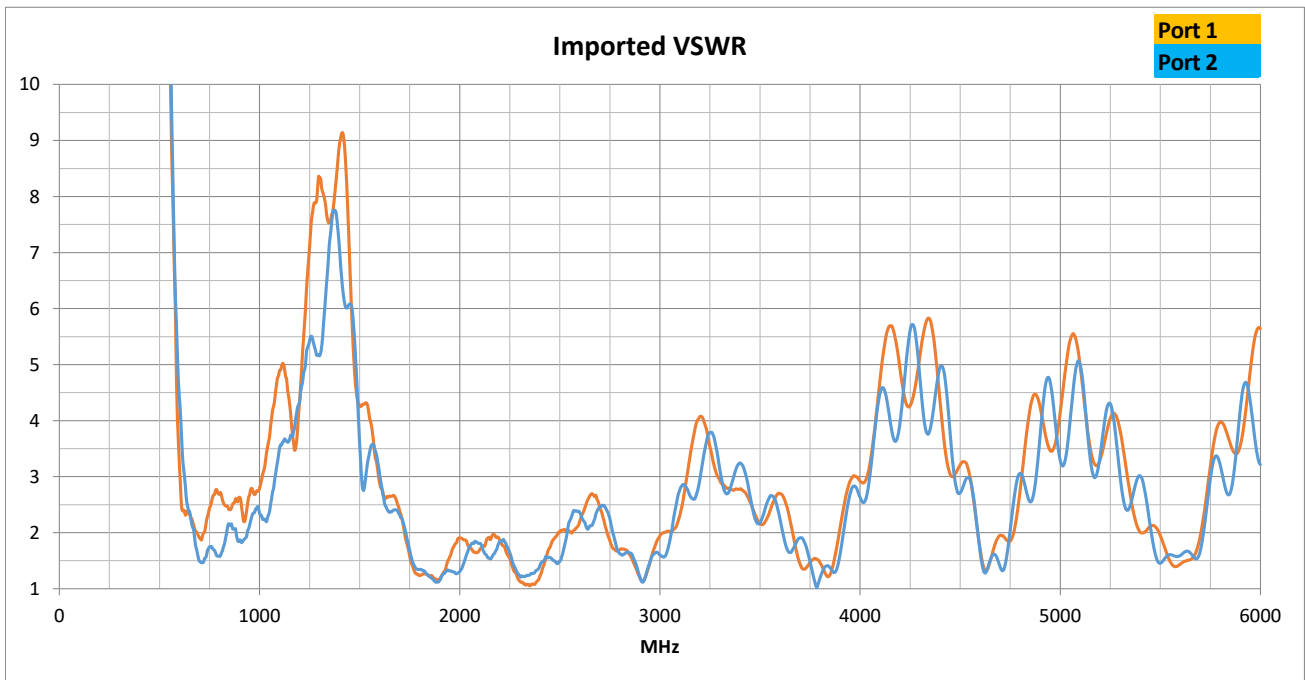
Part Number	Description
OSCAR420/0.4M/NTYPEF/S/S/19	2G/3G/4G/5G & WIFI MIMO 2-PORT OMNIDIRECTIONAL ANTENNA N TYPE FEMALE CONNECTORS 2 X 0.4M CABLES
ASMA500R058L13	SMA(M) TO N TYPE(M) 5M LOW LOSS (LLC200A) CABLE ASSEMBLY
ASMR1000A058L13	N-TYPE(M) TO SMA(M) 10M LOW LOSS (LLC200A) CABLE ASSEMBLY



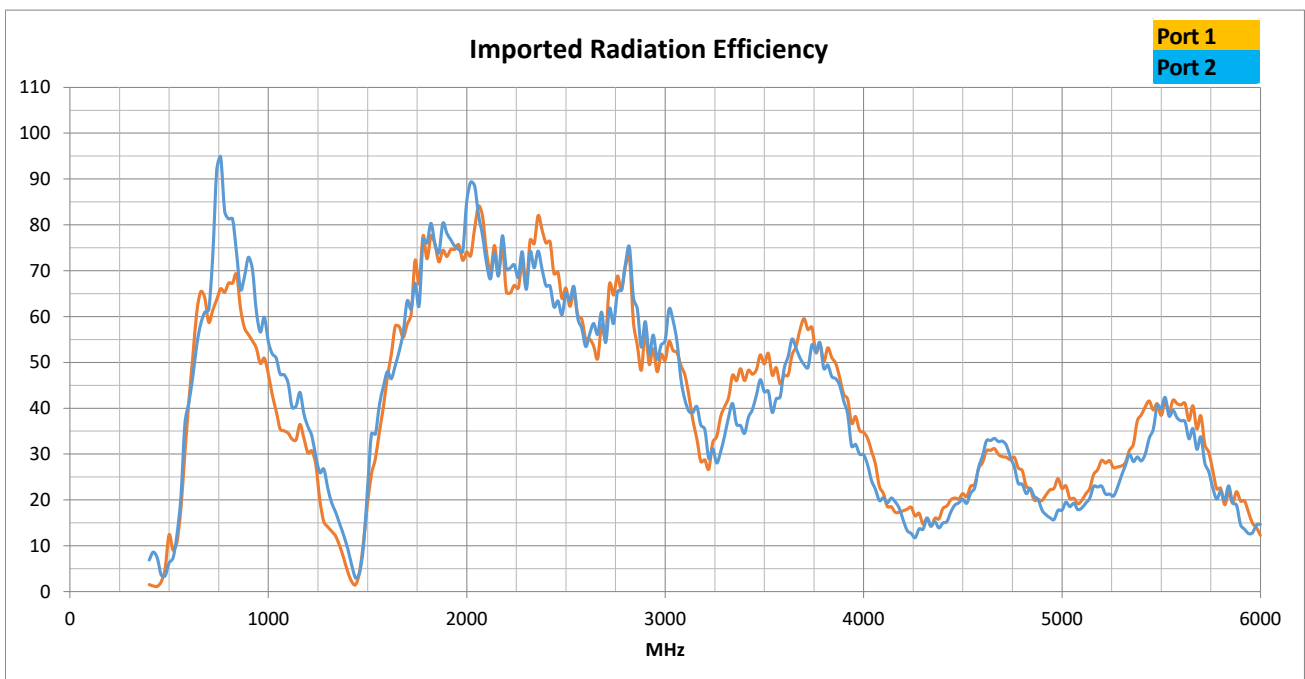
## Oscar 420

2G/3G/4G/5G & WIFI MIMO 2-PORT OMNIDIRECTIONAL ANTENNA

### VSWR

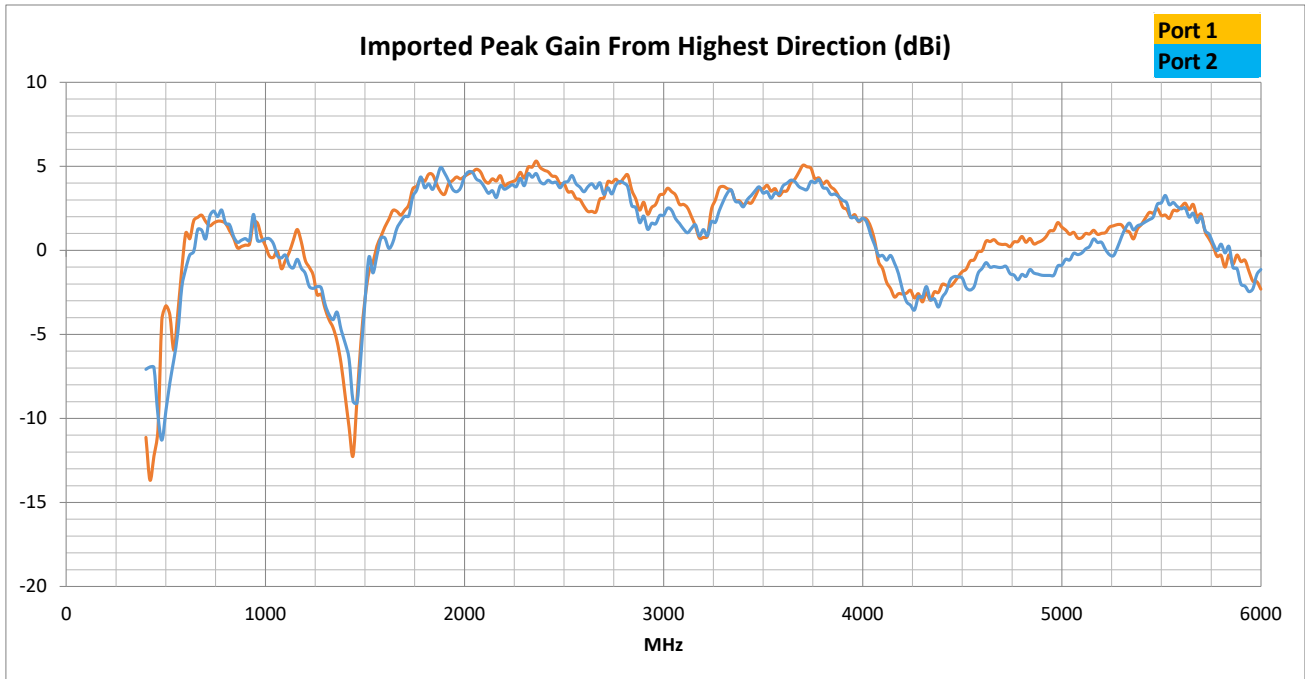


### Radiation Efficiency





### Peak Gain from Highest Direction

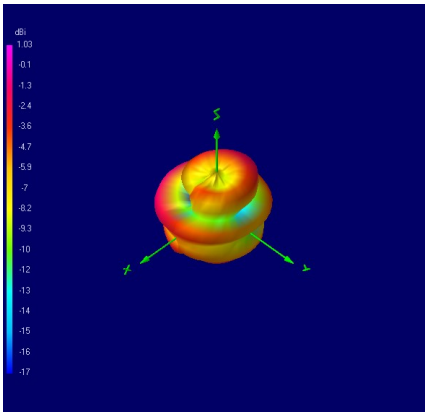




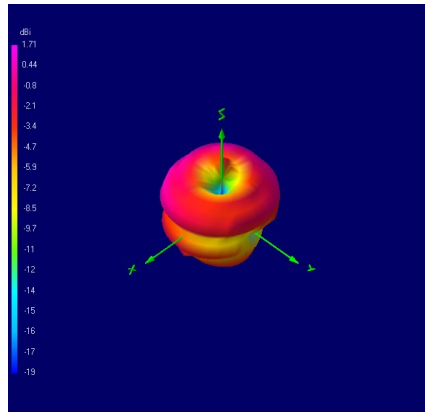
## Oscar 420

2G/3G/4G/5G & WIFI MIMO 2-PORT OMNIDIRECTIONAL ANTENNA

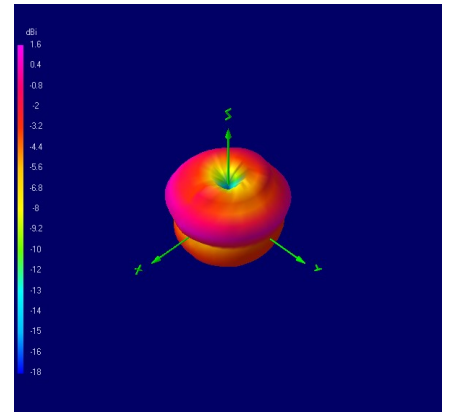
### Radiation Patterns: 600 MHz



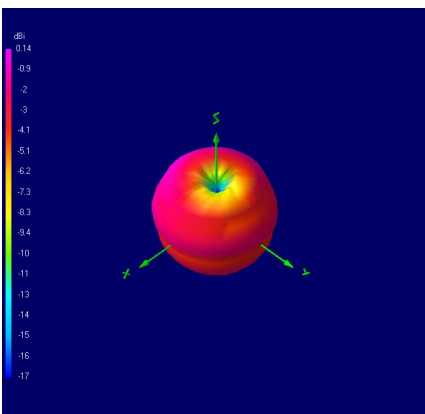
### 700 MHz



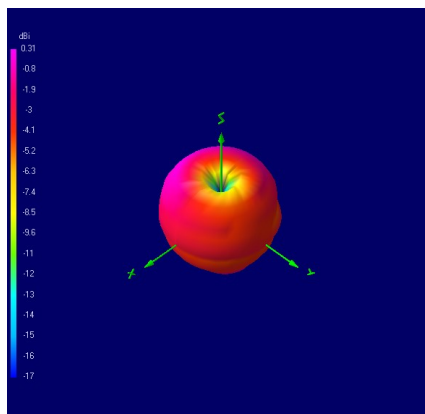
### 800 MHz



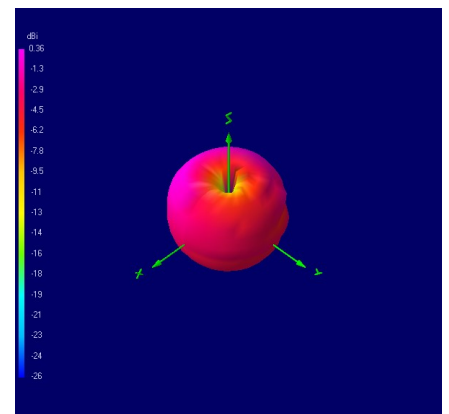
### 868 MHz



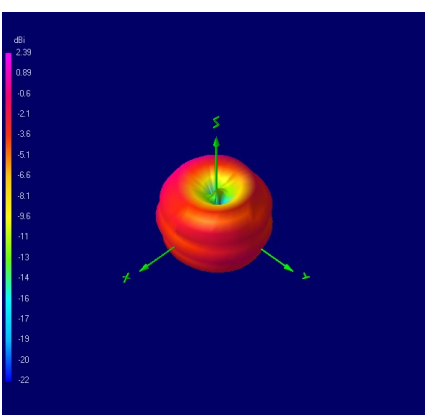
### 900 MHz



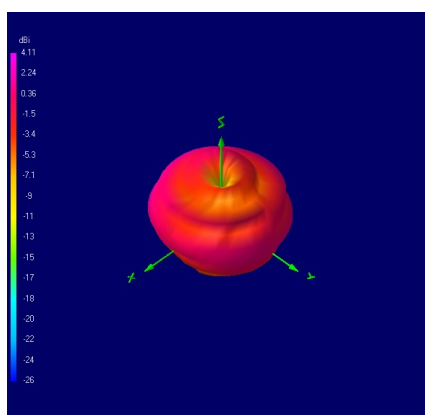
### 915 MHz



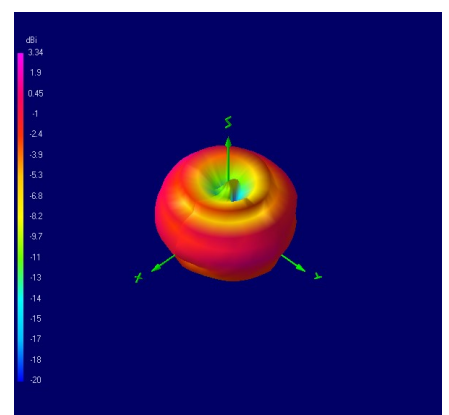
### 1700 MHz



### 1800 MHz



### 1900 MHz

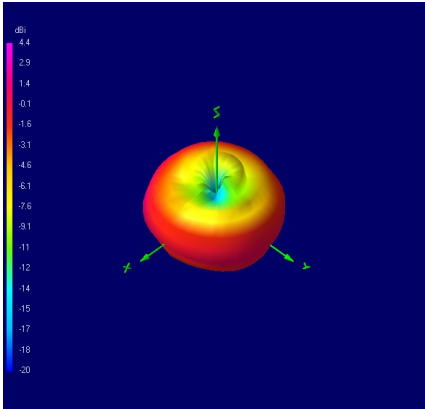




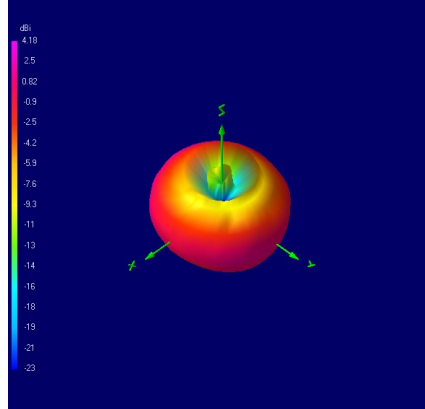
## Oscar 420

2G/3G/4G/5G & WIFI MIMO 2-PORT OMNIDIRECTIONAL ANTENNA

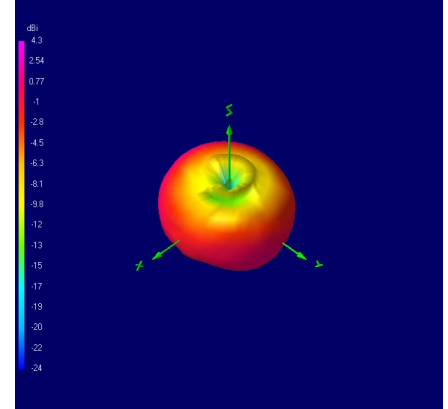
2000 MHz



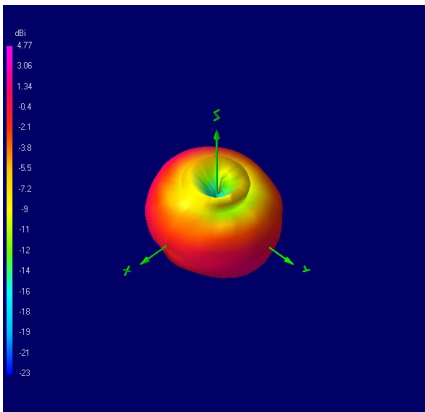
2100 MHz



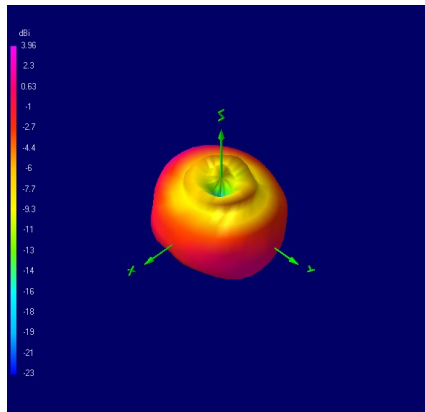
2300 MHz



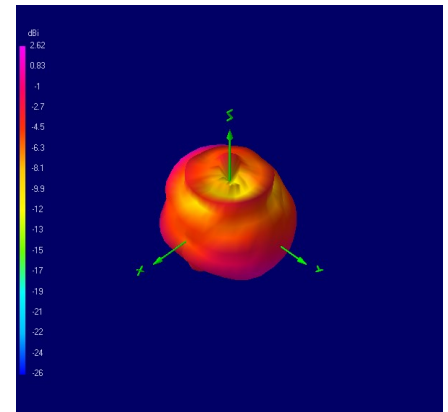
2400 MHz



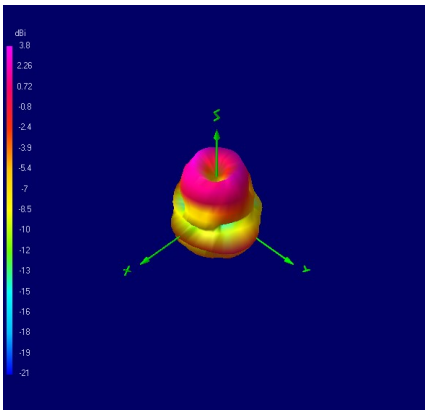
2500 MHz



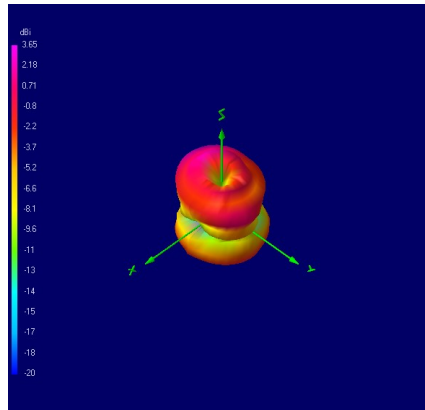
2600 MHz



3300 MHz



3500 MHz



3700 MHz

