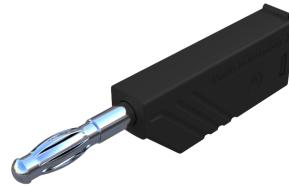

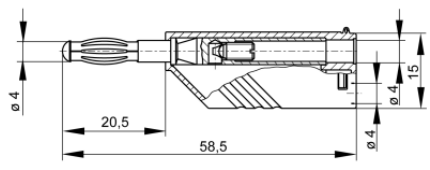


Plugs

LAS N WS



Product	LAS N WS
description	Connector for tower construction with screw connection for leads from 0.5 mm ² to 1.5 mm ² , outer diameter of lead max. 4.2 mm. Plug 4 mm with caged spring, not contact-protected. Simple assembly by Click-System.
operating instruction	BA415
article-no. / *colour	9341001xx  00 black 01 red 02 blue 03 yellow 04 green 05 brown 06 gray 07 white 09 violet <div style="text-align: right; border: 1px solid black; padding: 2px;">Ni</div>
drawing	
technical data	
connection	screw terminal
rated voltage	30 VAC / 60 VDC
measurement cat. acc. to IEC 61010	O ⁽²⁾
rated current (consider derating curve)	24 A
material plug	brass, nickel plated
housing material	PA
temperature range acc. To IEC61010 ⁽¹⁾	-15 °C to +70 °C
flammability class acc. to UL 94 (only valid for basic material of housing)	V-2

4 mm system

⁽¹⁾ contact the manufacturer for applications at deviating temperature ranges

⁽²⁾ without rated measurement category, for other circuits that are not directly connected to mains
stand: 21.06.2022

stand: 21.06.2022