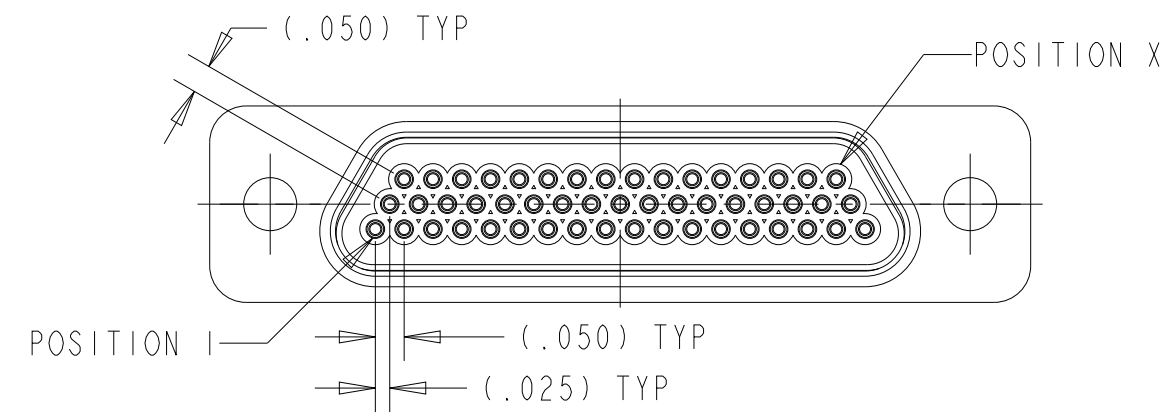
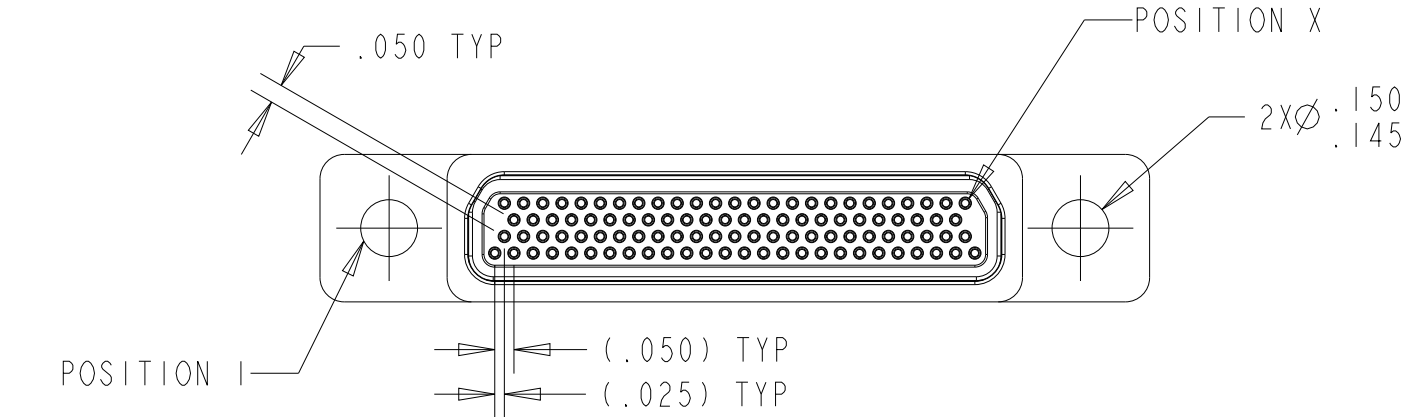


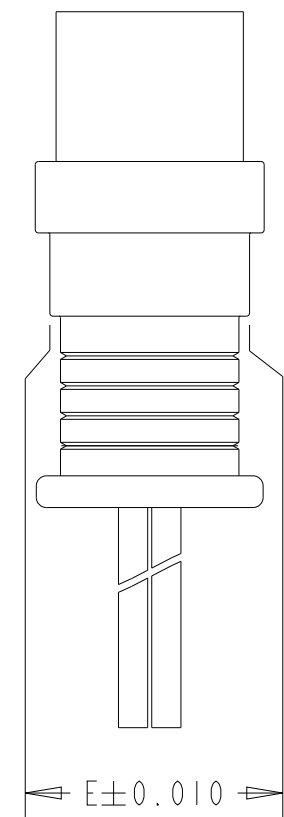
P	LTR	DESCRIPTION	DATE	DWN	APVD
3		ECN-21-117951	15SEP2021	LS	SKM
4		ECN-21-121865	13OCT2021	LS	SKM
5		ECN-23-196165	12NOV2021	LS	SKM
A		ECN-23-216854	13JUN2023	LS	NH



INSERT LAYOUT - SIZE 51, 3 ROW
SCALE 3:1



INSERT LAYOUT - SIZE 100, 4 ROW
SCALE 2:1



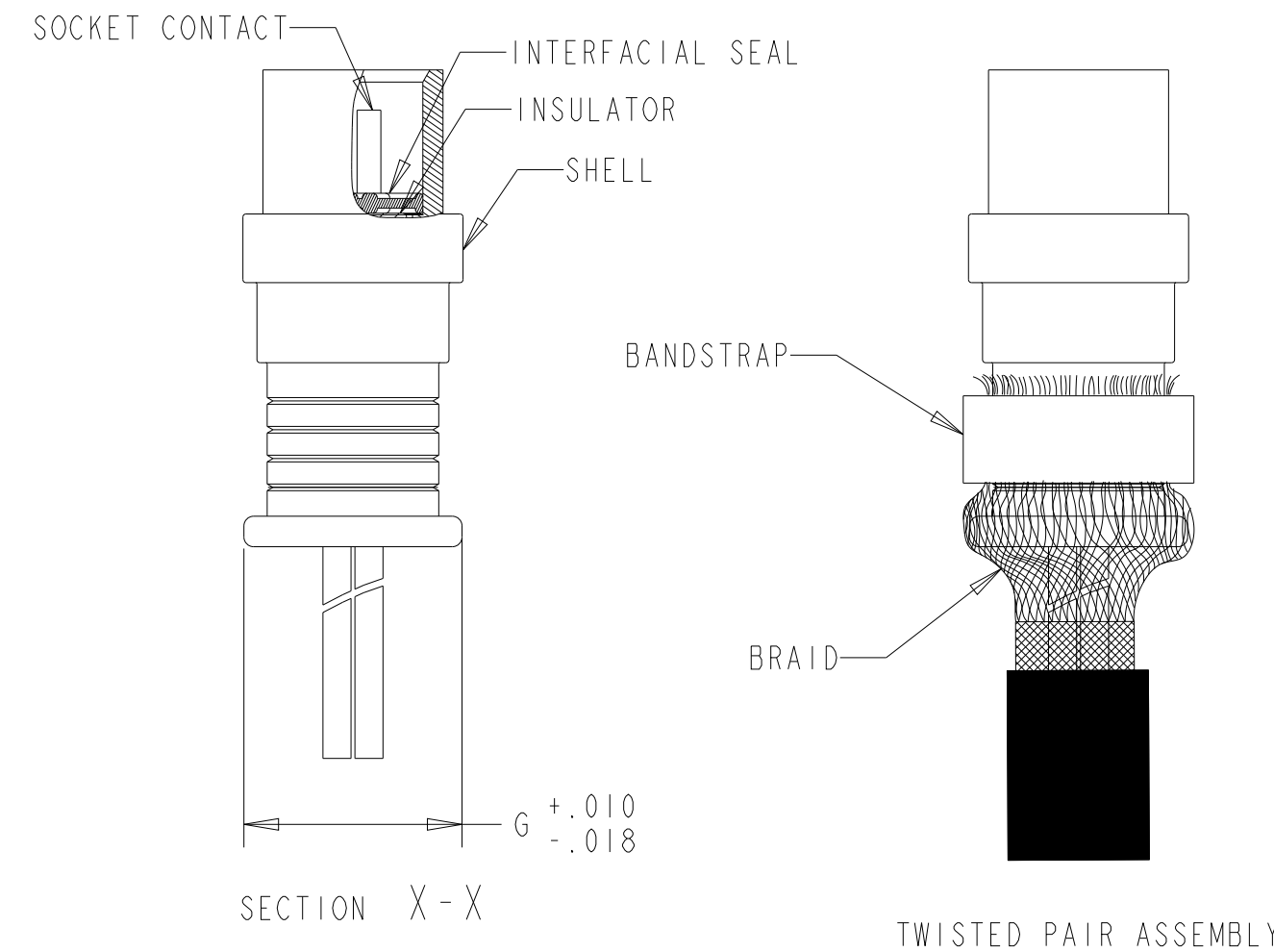
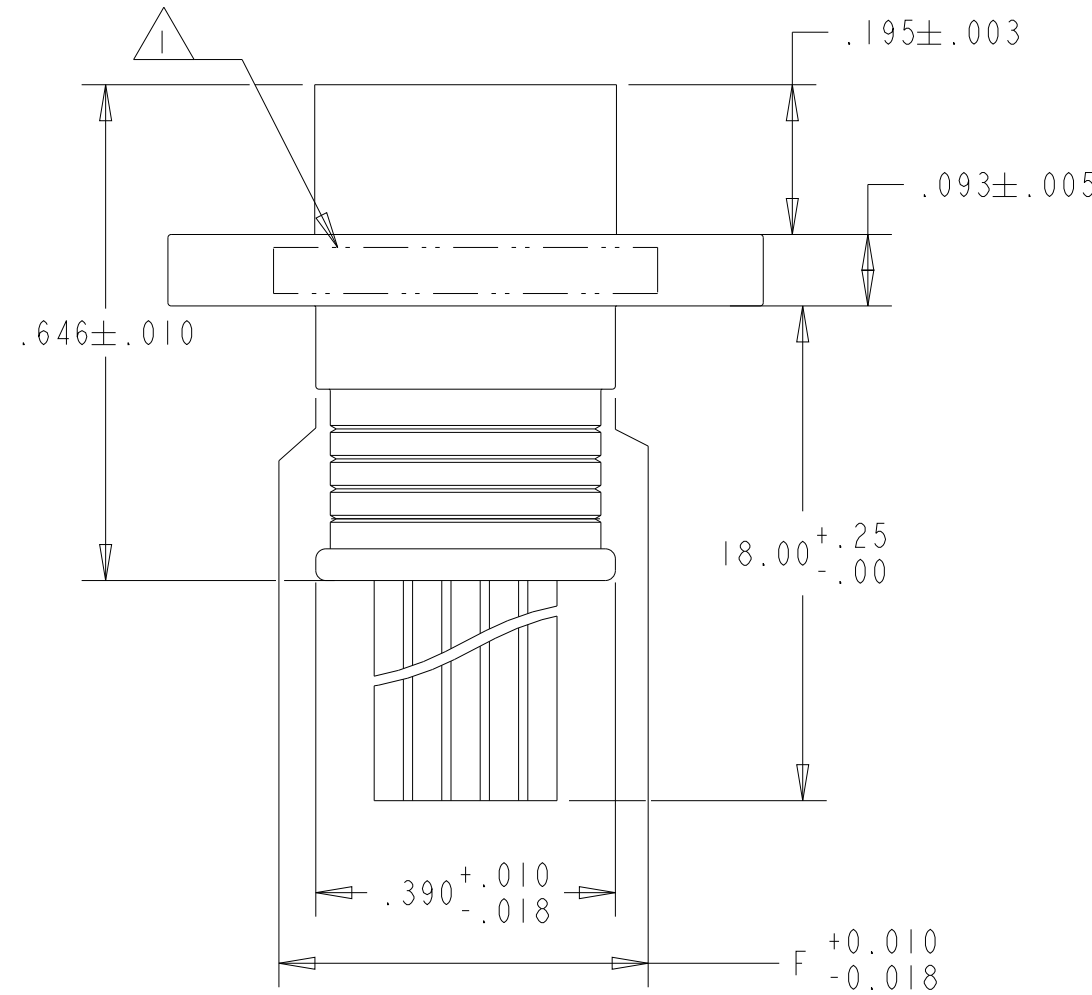
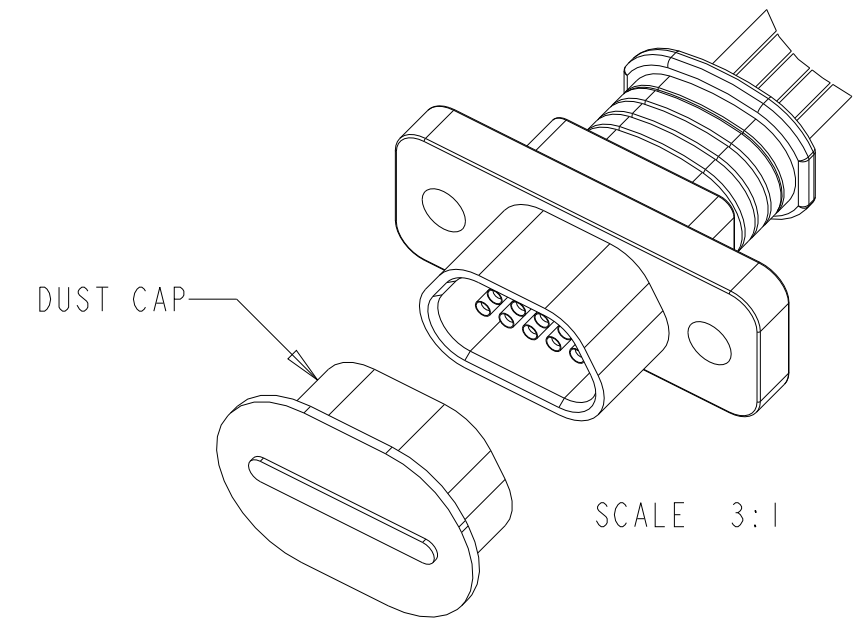
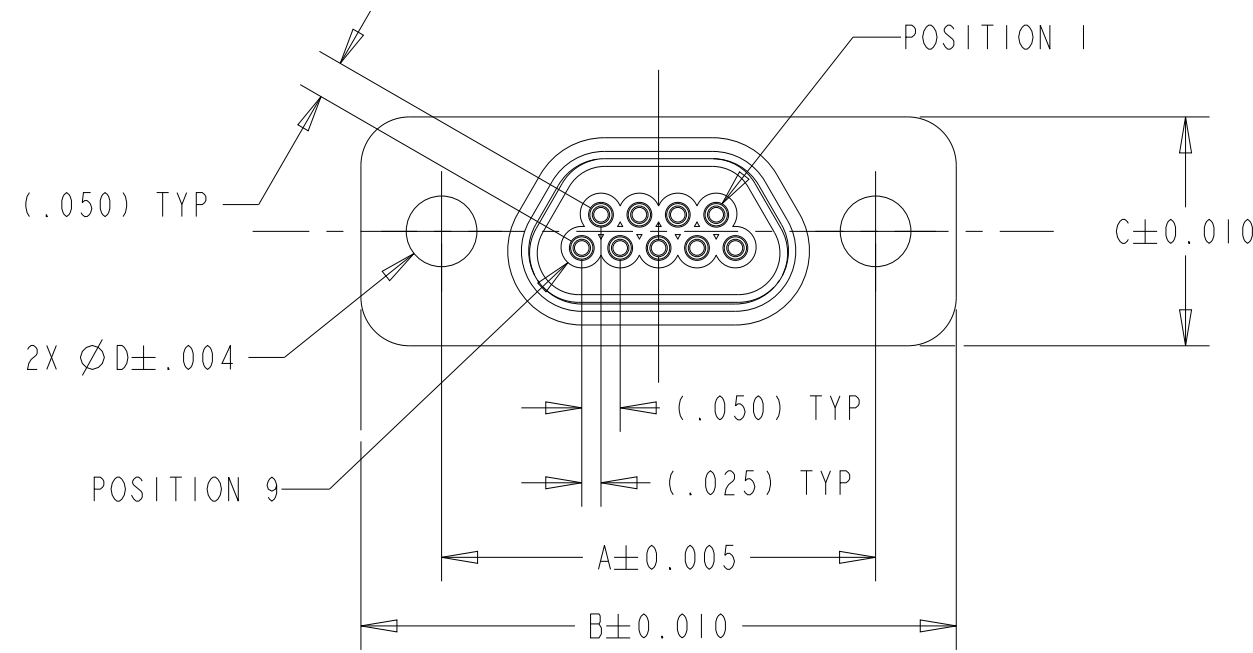
1 INMARK TE PN AND DATE CODE YYWW ON CONNECTOR SHELL

2 SPECIFICATION:

- a. ELECTRICAL:
 - CONTACT RESISTANCE : 25 millivolt MAX. AT 3 AMPS
 - INSULATION RESISTANCE : 5000 megaohms MIN. @ 500 VDC AT AMBIENT ROOM TEMPERATURE
 - CURRENT RATING : 3 AMP MAX. PER CONTACT
- b. MECHANICAL:
 - CONTACT ENGAGING FORCE : 2.22 N MAX. PER CONTACT
 - CONTACT SEPERATION FORCE : 1.67 N TYP. PER CONTACT
- c. ENVIRONMENTAL:
 - OPERATING TEMPERATURE : -55° C TO +125° C
 - VIBRATION CHARACTERISTICS : PER MIL-83513 SECTION 3.5.12 AND 4.5.14

3 MATERIAL:
SHELL : ALUMINIUM ALLOY 6061 T6 GRADE.
CONTACT : COPPER ALLOY
INSULATION : PPS

4 FINISH:
CONTACTS : GOLD PLATED PER MIL-G-45204, TYPE II, CLASS I



PART DESCRIPTION	WEIGHT (g) 5	NUMBER OF ROWS	X	A	B	C	D	E	F	G
BMCK-NI-B-9S6GI-K	13	2	9	.565	.775	.298	.092	.260	.390	.30
BMCK-NI-B-15S6GI-K	21	2	15	.715	.925	.298	.092	.260	.540	.30
BMCK-NI-B-21S6GI-K	29	2	21	.865	1.075	.298	.092	.260	.690	.30
BMCK-NI-B-25S6GI-K	34	2	25	.965	1.175	.298	.092	.260	.790	.30
BMCK-NI-B-31S6GI-K	42	2	31	1.115	1.325	.298	.092	.260	.940	.30
BMCK-NI-B-37S6GI-K	50	2	37	1.265	1.475	.298	.092	.260	1.090	.30
BMCK-NI-B-51S6GI-K	68	3	51	1.215	1.425	.341	.092	.303	1.040	.33
BMCK-NI-B-100S6GI-K	132.5	4	100	1.800	2.160	.384	.148	.350	1.430	.37

THIS DRAWING IS A CONTROLLED DOCUMENT.

DIMENSIONS: in	TOLERANCES UNLESS OTHERWISE SPECIFIED: 0 PLC ± 1 PLC ±0.010 2 PLC ±0.005 3 PLC ±0.005 4 PLC ± ANGLES ±1° FINISH	DWN LAKSHMI SILVAN 08APR2021	NAME SURESH KUMAR M	TE Connectivity
		CHK N S SUDHAKAR 08APR2021		
MATERIAL 3	4	APVD SURESH KUMAR M 08APR2021	APPLICATION SPEC	SIZE A2
		108-116083	114-116083	CAGE CODE 98278
CUSTOMER DRAWING		WEIGHT 5	DRAWING NO C-2390909	RESTRICTED TO -
		SCALE 5:1	SHEET 1 OF 2	REV A

REVISIONS

P	LTR	DESCRIPTION	DATE	DWN	APVD
		SEE SHEET 1			

BMCK - NI - B - 9 - S - 6 - A - I - K - X

CONNECTOR SERIES

BMCK
(WITH INTEGRATED BACK SHELL)

SHELL FINISH

NI - NICKEL, ELECTROLESS
C2 - CADMIUM, YELLOW CHROMATE

HARDWARE

B - NO HARDWARE
 KM - JACKSCREW, SLOTTED HEAD, HIGH PROFILE (9-51)
 HM - JACKSCREW, SLOTTED HEAD, HIGH PROFILE (100)
 LM - JACKSCREW, SLOTTED HEAD, LOW PROFILE (9-51)
 JM - JACKSCREW, SLOTTED HEAD, LOW PROFILE (100)
 QM - JACKSCREW, ALLEN HEAD, HIGH PROFILE (9-51)
 TM - JACKSCREW, ALLEN HEAD, HIGH PROFILE (100)
 RM - JACKSCREW, ALLEN HEAD, LOW PROFILE (9-51)
 NM - JACKSCREW, ALLEN HEAD, LOW PROFILE (100)
 P - JACKPOST ASSEMBLY

LAYOUT

9, 15, 21, 25, 31, 37, 51, 100 POSITION

CONTACT TYPE

S - SOCKET (RECEPTACLE)

BRAID

X-WITH BRAID
0-WITHOUT BRAID

LEAD LENGTH (inches) Min

18, 24, 36, 72 (FOR OTHER LENGTHS CONTACT TE CONNECTIVITY)

INSULATION COLOR

1 - ALL WHITE WIRE 7 - COLOR CODED PER MIL-STD-681, SYSTEM 1
 2 - ALL YELLOW WIRE 8 - SPECIAL COLOR CODE
 3 - ALL GRAY WIRE 9 - 10 SOLID COLOR REPEATING PER MIL-DTL-83513


WIRE TYPE

PER MIL-W-16878 {
 A - TYPE E, 7 STRAND
 B - TYPE ET, 7 STRAND
 C - TYPE E, 19 STRAND
 D - TYPE ET, 19 STRAND
 G - 19 STRAND PER MIL-C-22759/11
 (26 AWG)
 Q - STRANDED PER MIL-W-22759/33, SPEC 55A
 (26 AWG)
 R - NEMA HP3-EXB
 (26 AWG)

*PLEASE CONTACT TE CONNECTIVITY FOR TWISTED PAIR WIRE OPTIONS

WIRE SIZE

4-24 AWG 5-25 AWG 6-26 AWG 8-28 AWG 0-30 AWG

THIS DRAWING IS A CONTROLLED DOCUMENT.		DWN LAKSHMI SIVAN 08APR2021	 TE Connectivity	
DIMENSIONS: in		CHK N S SUDHAKAR 08APR2021		
TOLERANCES UNLESS OTHERWISE SPECIFIED:		APVD SURESH KUMAR M 08APR2021	NAME MICRODOT INTEGRATED BACKSHELL RECEPTACLE ASSY	
0 PLC ± 1 PLC ± 2 PLC ±0.010 3 PLC ±0.005 4 PLC ± ANGLES ±1°		PRODUCT SPEC 108-116083	RESTRICTED TO -	
MATERIAL FINISH		APPLICATION SPEC	SIZE A2	CAGE CODE 00779
		WEIGHT	DRAWING NO C-2390909	SCALE 5:1
		CUSTOMER DRAWING	SHEET 2 OF 2	REV A