

# DE2B3SA681KN3AX02F



## Applications

Unsuitable Applications	Please be sure to read and comply with these "Precautions for use."
Specific Applications	Consumer equipment, Industrial Equipment, Mobile Electronics, Medical equipment [GHTF A/B/C] except for implant equipment, Automotive infotainment/comfort equipment Please refer to Our Website and specifications, etc. for information about the performance, functions, quality, management, and safety required for the above applications, and use Products after confirming the performance and reliability of the actual Product.

## Notices

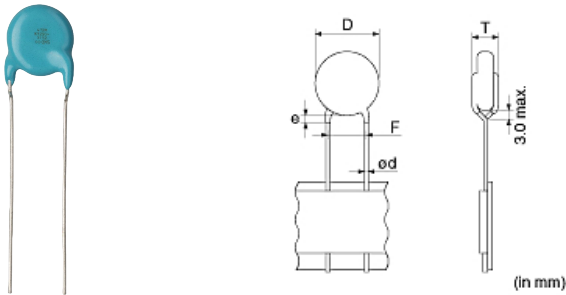
X1/Y2 Class Certified Products. Halogen-free Products. Rated Voltage X1:300Vac(r.m.s.)/1500Vdc Y2:300Vac(r.m.s.)/1500Vdc

## References

Packaging	Specifications	Standard Packing Quantity
A	Ammo Pack	1000

## Appearance & Shape

Mass (typ.)	
1 piece	0.33g



**Attention**  
1.This datasheet is downloaded from the website of Murata Manufacturing Co., Ltd. Therefore, it's specifications are subject to change or our products in it may be discontinued without advance notice. Please check with our sales representatives or product engineers before ordering.  
2.This datasheet has only typical specifications because there is no space for detailed specifications.  
Therefore, please review our product specifications or consult the approval sheet for product specifications before ordering.

# DE2B3SA681KN3AX02F



## Specifications

T size	4.0mm max.
Lead spacing F	7.5±1.0mm
Lead diameter d	0.6±0.05mm
Paint dripping e	Up to the end of crimp
Capacitance	680pF ±10%
Rated voltage	300Vac(r.m.s.)
Temperature characteristics	B(JIS)
Capacitance change rate	±10%
Temperature range of temperature characteristics	-25°C to 85°C
Operating Temperature Range	-40°C to 125°C

### Attention

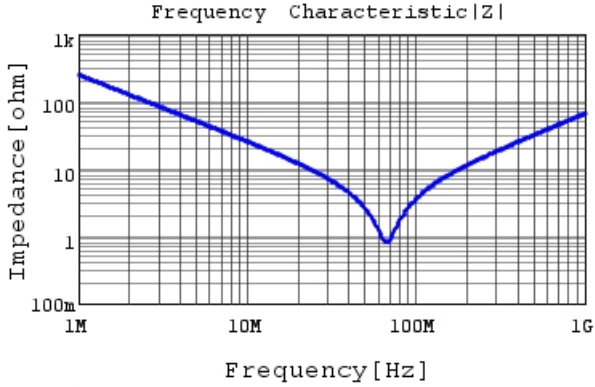
- 1.This datasheet is downloaded from the website of Murata Manufacturing Co., Ltd. Therefore, it's specifications are subject to change or our products in it may be discontinued without advance notice. Please check with our sales representatives or product engineers before ordering.
- 2.This datasheet has only typical specifications because there is no space for detailed specifications.  
Therefore, please review our product specifications or consult the approval sheet for product specifications before ordering.

# DE2B3SA681KN3AX02F

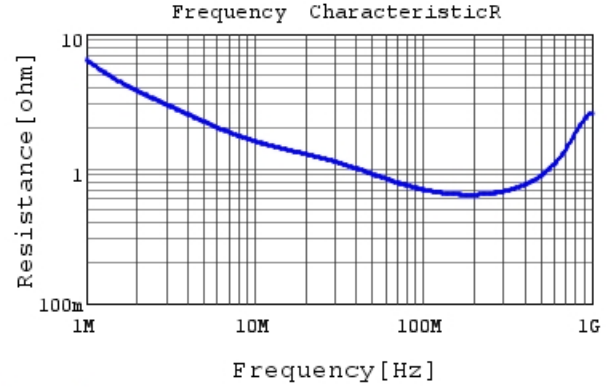


## Characteristic Data

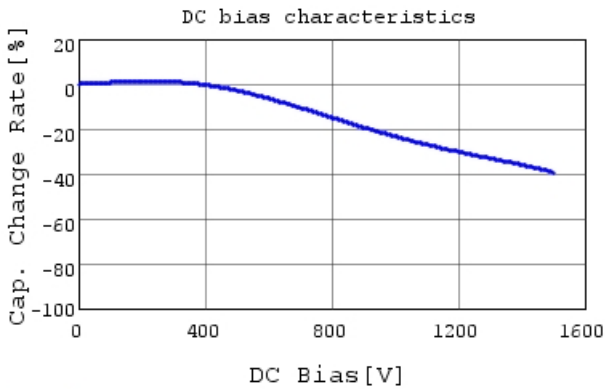
The charts below may show another part number which shares its characteristics.



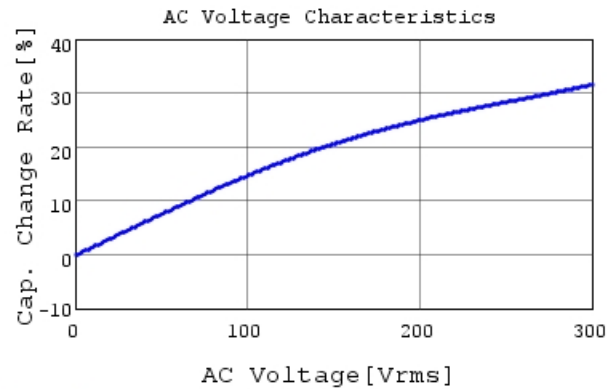
DE2B3SA681KN3AX02F |Z| DCOV, 20degC



DE2B3SA681KN3AX02F R DCOV, 20degC



DE2B3SA681KN3AX02F C-DC bias capchange, 20.0

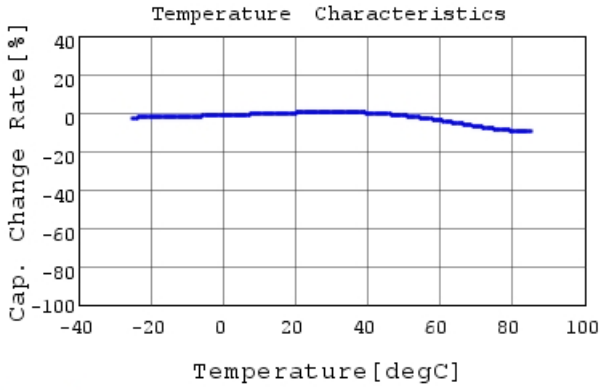


DE2B3SA681KN3AX02F C-AC Voltage capchange, I

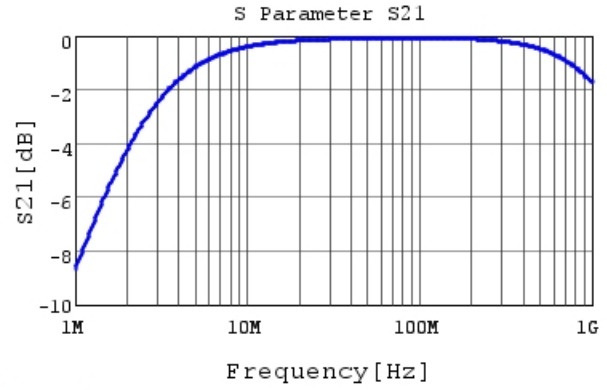
**Attention**

- 1.This datasheet is downloaded from the website of Murata Manufacturing Co., Ltd. Therefore, it's specifications are subject to change or our products in it may be discontinued without advance notice. Please check with our sales representatives or product engineers before ordering.
- 2.This datasheet has only typical specifications because there is no space for detailed specifications.  
Therefore, please review our product specifications or consult the approval sheet for product specifications before ordering.

# DE2B3SA681KN3AX02F



DE2B3SA681KN3AX02F C-Temp. capchange, DCOV,



DE2B3SA681KN3AX02F S21 DCOV, 20degC

**Attention**

- 1.This datasheet is downloaded from the website of Murata Manufacturing Co., Ltd. Therefore, it's specifications are subject to change or our products in it may be discontinued without advance notice. Please check with our sales representatives or product engineers before ordering.
- 2.This datasheet has only typical specifications because there is no space for detailed specifications.  
Therefore, please review our product specifications or consult the approval sheet for product specifications before ordering.