

KCA55L7UMF152KL01L

“#” at the end indicates the package specification code.



< List of part numbers with package codes >

KCA55L7UMF152KL01L KCA55L7UMF152KL01K

Applications

Unsuitable Applications	Please be sure to read and comply with these "Precautions for use."
Specific Applications	Automotive powertrain/safety equipment, Automotive infotainment/comfort equipment, Consumer equipment, Industrial Equipment, Mobile Electronics, Medical equipment [GHTF A/B/C] except for implant equipment Please refer to Our Website and specifications, etc. for information about the performance, functions, quality, management, and safety required for the above applications, and use Products after confirming the performance and reliability of the actual Product.

Notices

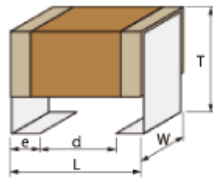
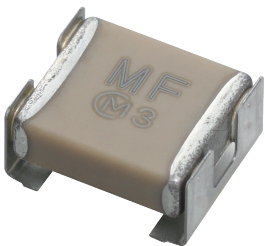
X1/Y2 Class Certified Products. Rated Voltage
X1:250Vac(r.m.s.)/1000Vdc Y2:250Vac(r.m.s.)/1000Vdc

References

Packaging	Specifications	Standard Packing Quantity
L	180Embossed Tape	400
K	330Embossed Tape	2000

Appearance & Shape

Mass (typ.)	
1 piece	0.26g



Attention

- 1.This datasheet is downloaded from the website of Murata Manufacturing Co., Ltd. Therefore, it's specifications are subject to change or our products in it may be discontinued without advance notice. Please check with our sales representatives or product engineers before ordering.
- 2.This datasheet has only typical specifications because there is no space for detailed specifications.
Therefore, please review our product specifications or consult the approval sheet for product specifications before ordering.

KCA55L7UMF152KL01L

“#” at the end indicates the package specification code.



Specifications

Length	6.1±0.4mm
Width	5.1±0.3mm
Thickness	2.8±0.2mm
Capacitance	1500pF ±10%
Distance between metal terminal d	4.0mm(min.)
Metal terminal width e	0.9±0.2mm
Operating Temperature Range	-55°C to 125°C
Rated Voltage	250Vac(r.m.s.)
TC	-55 to 25°C: -750+120/-347ppm/°C 25 to 125°C: -750±120ppm/°C
Temperature characteristics (complied standard)	U2J(EIA)
Temperature range of temperature characteristics	-55°C to 125°C

Attention

- 1.This datasheet is downloaded from the website of Murata Manufacturing Co., Ltd. Therefore, it's specifications are subject to change or our products in it may be discontinued without advance notice. Please check with our sales representatives or product engineers before ordering.
- 2.This datasheet has only typical specifications because there is no space for detailed specifications.
Therefore, please review our product specifications or consult the approval sheet for product specifications before ordering.