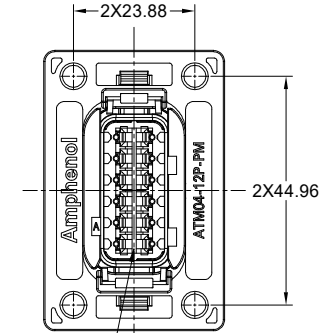
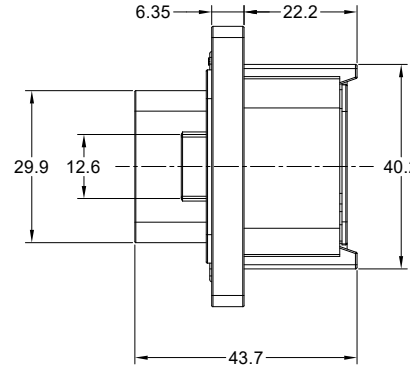
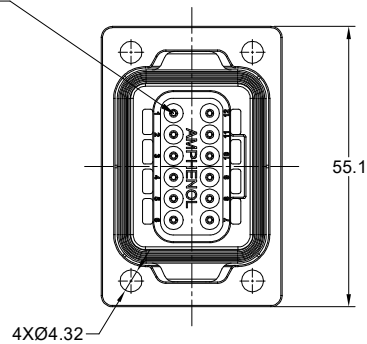
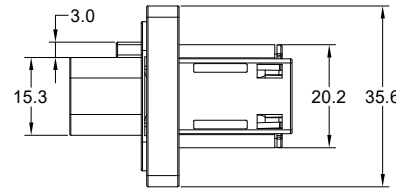
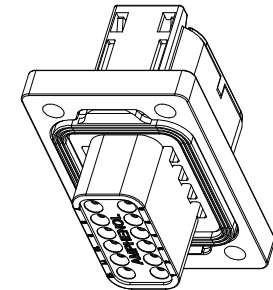


REVISIONS					
REV	ECO	DESCRIPTION	DATE	BY	APPR
A1	-	RELEASE NEW DRAWING	Sep/28/23	LUCAS	TOMMY
A2	-	UPDATE THE DIEMENSION	Oct/19/23	LUCAS	TOMMY
A3	-	UPDATE THE NOTE	Feb/18/24	LUCAS	TOMMY

6 SIZE 20 CONTACTS (12 PLACES)



REQUIRE CONTACT RETENTION WEDGE AWM-12P



NOTES: UNLESS OTHERWISE SPECIFIED

- MATERIAL:
HOUSING: THERMOPLASTIC;COLOR:SEE CHART;
SEAL: SILICONE RUBBER ;
- MODIFICATIONS: FRONT PANEL MOUNT;NORMAL DIAMETER SEAL
- SPECIFICATIONS:
 - OPERATING TEMPERATURE: -55°C TO +125°C.
 - DIELECTRIC WITHSTANDING VOLTAGE: LESS THAN 2 MILLIAMPS CURRENT LEAKAGE @ 1500 VOLTS AC.
 - INSULATION RESISTANCE: 1000 MEGOHM MIN @ 25°C.
 - MOISTURE RESISTANCE: IP69K & IP68 (1M OF WATER FOR A PERIOD OF 24 HOURS, MATED CONDITION).
 - MATING CYCLE DURABILITY: 100 CYCLES
 - RoHS COMPLIANT
- MATING PART:ATM06-12SX* (X = A,B,C,D KEYS,*=ALL MODIFACATION)
- ALL DIMENSIONS ARE FOR REFERENCE USE ONLY.

6 CONTACT SIZE AND WIRE RANGE:

CONTACT SIZE	MIN. INSUL O.D.	MAX. INSUL O.D.	TYPICAL WIRE RANGE
20	1.35 mm (.053 in)	3.05 mm (.12 in)	16-20 AWG (1.0-0.5mm ²)

	ATM04-12PD-PM31	REF:1-2303064-4	
	ATM04-12PC-PM31	REF:1-2303064-3	
	ATM04-12PB-PM31	REF:1-2303064-2	
	ATM04-12PA-PM31	REF:1-2303064-1	
	PART NUMBER	DESCRIPTION	ITEM

QUANTITY	MATERIALS LIST		
UNLESS OTHERWISE SPECIFIED			
1) All dimensions are in metric(mm).			
2) Tolerances are as follows:			
1 PL DEC ±0.30			
2 PL DEC ±0.15			
3 PL DEC ±0.08			
3) Note reference =			
SIGNATURES		DATE	
DRAWN: LUCAS CHAI		Feb/18/24	
CHECKED: ORION LI		Feb/19/24	
ENGINEER:			
APPROVAL: TOMMY XIE		Feb/19/24	
CUSTOMER:			
MATERIAL SPECIFICATIONS:			
PROCESS SPECIFICATIONS:			
NEXT ASSY:			
THIS DRAWING IS SUPPLIED FOR INFORMATION ONLY. DESIGN FEATURES, SPECIFICATIONS AND PERFORMANCE DATA SHOWN HEREON ARE THE PROPERTY OF THE AMPHENOL CORPORATION. NO RIGHTS OF REPRODUCTION ARE IMPLIED. ALL DIMENSIONS ARE SUBJECT TO NORMAL MANUFACTURING VARIATIONS.			
<p style="text-align: center;">Amphenol</p> <p style="text-align: center;">Sine Systems - www.amphenol-sine.com 44724 Morley Drive Clinton Township, MI 48036</p>			
12 POS,RECEPTACLE WITH FLANGE,PANELMATE™, FRONT PANEL MOUNT,ATM SERIES,KEYED			
SIZE	TYPE	DWG NO:	REVISION
B	C-	ATM04-12Px-PM31	A3
SCALE	NONE		SHEET 1 OF 3

TITLE: RECEPTACLE WITH FLANGE,PANELMATE™ FRONT PANEL MOUNT,ATM SERIES,KEYED

DWG NO:

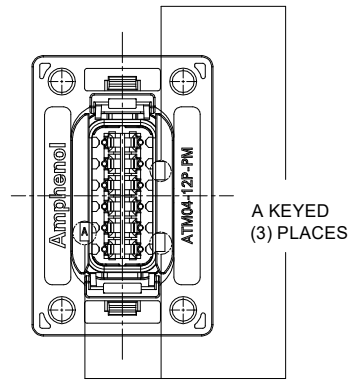
ATM04-12Px-PM31

REV: A3

SH: 1

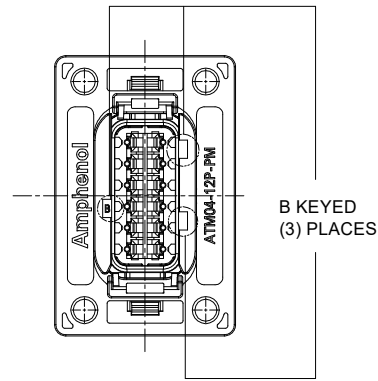
OF: 3

REVISIONS					
REV	ECO	DESCRIPTION	DATE	BY	APPR
A1	-	RELEASE NEW DRAWING	Sep/28/23	LUCAS	TOMMY
A2	-	UPDATE THE DIEMENSION	Oct/19/23	LUCAS	TOMMY
A3	-	UPDATE THE NOTE	Feb/18/24	LUCAS	TOMMY



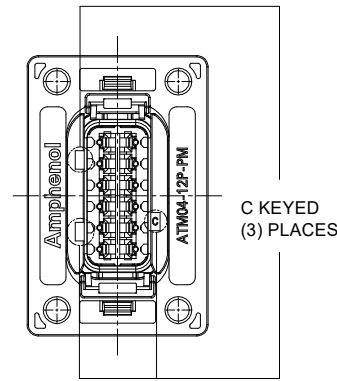
A KEYED
(3) PLACES

KEY-A CONFIGURATION	
COLOR	PART NUMBER
GRAY	ATM04-12PA-PM31



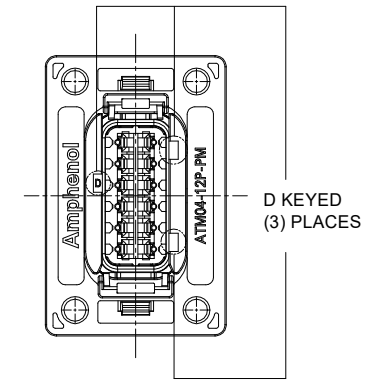
B KEYED
(3) PLACES

KEY-B CONFIGURATION	
COLOR	PART NUMBER
BLACK	ATM04-12PB-PM31



C KEYED
(3) PLACES

KEY-C CONFIGURATION	
COLOR	PART NUMBER
GREEN	ATM04-12PC-PM31

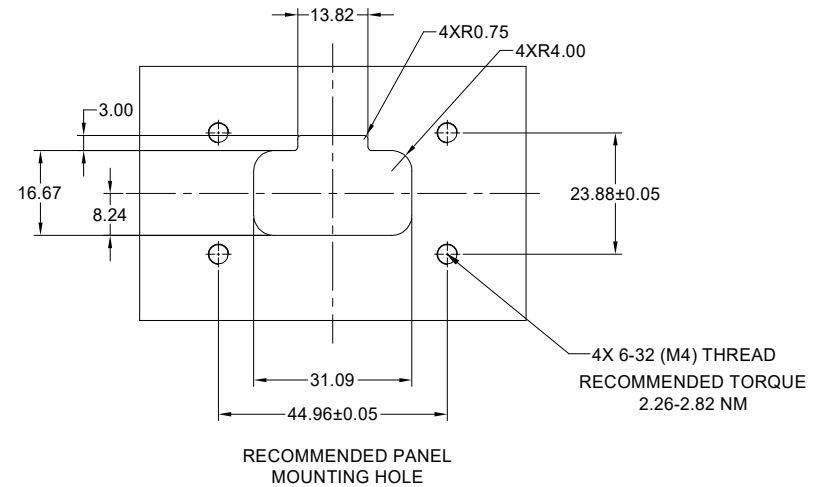
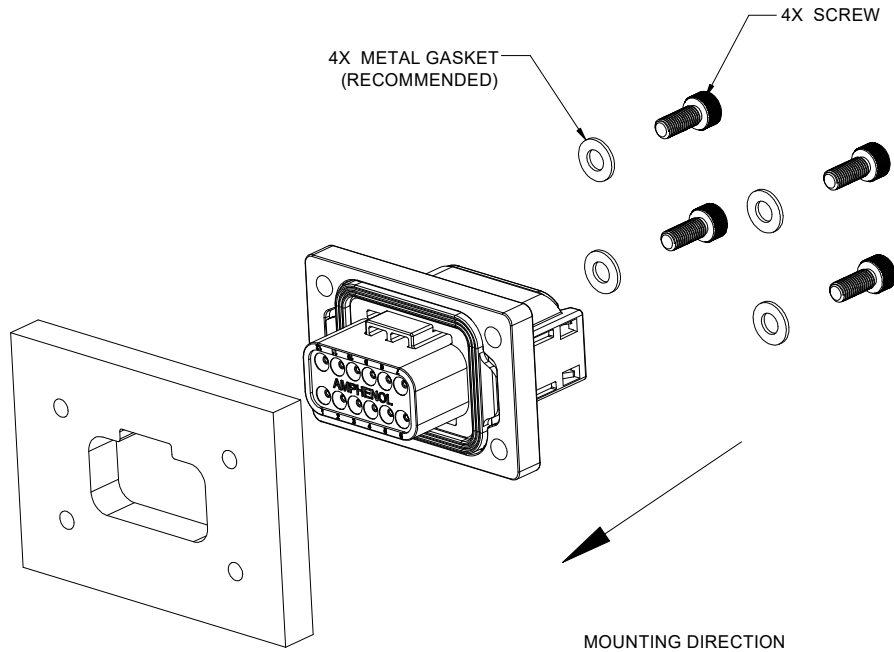


D KEYED
(3) PLACES

KEY-D CONFIGURATION	
COLOR	PART NUMBER
BROWN	ATM04-12PD-PM31

QUANTITY	PART NUMBER	DESCRIPTION	ITEM
MATERIALS LIST			
UNLESS OTHERWISE SPECIFIED 1) All dimensions are in metric(mm). 2) Tolerances are as follows: 1 PL DEC ±0.30 2 PL DEC ±0.15 3 PL DEC ±0.08 3) Note reference =		SIGNATURES DATE DRAWN: LUCAS CHAI Feb/18/24 CHECKED: ORION LI Feb/19/24 ENGINEER: APPROVAL: TOMMY XIE Feb/19/24 CUSTOMER:	
MATERIAL SPECIFICATIONS: PROCESS SPECIFICATIONS: NEXT ASSY:		 Sine Systems - www.amphenol-sine.com 44724 Morley Drive Clinton Township, MI 48036 12 POS, RECEPTACLE WITH FLANGE, PANELMATE™, FRONT PANEL MOUNT, ATM SERIES, KEYED	
THIS DRAWING IS SUPPLIED FOR INFORMATION ONLY. DESIGN FEATURES, SPECIFICATIONS AND PERFORMANCE DATA SHOWN HEREON ARE THE PROPERTY OF THE AMPHENOL CORPORATION. NO RIGHTS OF REPRODUCTION ARE IMPLIED. ALL DIMENSIONS ARE SUBJECT TO NORMAL MANUFACTURING VARIATIONS.		SIZE TYPE DWG NO: B C- ATM04-12Px-PM31	REVISION A3
SCALE NONE		SHEET 2 OF 3	

REVISIONS					
REV	ECO	DESCRIPTION	DATE	BY	APPR
A1	-	RELEASE NEW DRAWING	Sep/28/23	LUCAS	TOMMY
A2	-	UPDATE THE DIEMENSION	Oct/19/23	LUCAS	TOMMY
A3	-	UPDATE THE NOTE	Feb/18/24	LUCAS	TOMMY



TITLE: 12 POS,RECEPTACLE WITH FLANGE,PANELMATE™ FRONT PANEL MOUNT,ATM SERIES,KEYED
 DWG NO.: ATM04-12Px-PM31
 REV: A3
 SH: 3
 OF: 3

QUANTITY	PART NUMBER	DESCRIPTION	ITEM
MATERIALS LIST			
UNLESS OTHERWISE SPECIFIED 1) All dimensions are in metric(mm). 2) Tolerances are as follows: 1 PL DEC ±0.30 2 PL DEC ±0.15 3 PL DEC ±0.08 Fractions ±1/64 Angles ±1°		SIGNATURES DATE DRAWN: LUCAS,CHAI Feb/18/24 CHECKED: ORION,LI Feb/19/24 ENGINEER: APPROVAL: TOMMY,XIE Feb/19/24 CUSTOMER:	
MATERIAL SPECIFICATIONS: THIS DRAWING IS SUPPLIED FOR INFORMATION ONLY. DESIGN FEATURES, SPECIFICATIONS AND PERFORMANCE DATA SHOWN HEREON ARE THE PROPERTY OF THE AMPHENOL CORPORATION. NO RIGHTS OF REPRODUCTION ARE IMPLIED. ALL DIMENSIONS ARE SUBJECT TO NORMAL MANUFACTURING VARIATIONS.		 Sine Systems - www.amphenol-sine.com 44724 Morley Drive Clinton Township, MI 48036	
PROCESS SPECIFICATIONS: THIS DRAWING IS SUPPLIED FOR INFORMATION ONLY. DESIGN FEATURES, SPECIFICATIONS AND PERFORMANCE DATA SHOWN HEREON ARE THE PROPERTY OF THE AMPHENOL CORPORATION. NO RIGHTS OF REPRODUCTION ARE IMPLIED. ALL DIMENSIONS ARE SUBJECT TO NORMAL MANUFACTURING VARIATIONS.		12 POS,RECEPTACLE WITH FLANGE,PANELMATE™, FRONT PANEL MOUNT,ATM SERIES,KEYED	
NEXT ASSY:		SIZE B C-	DWG NO: ATM04-12Px-PM31 REVISION A3
		SCALE NONE	SHEET 3 OF 3