

Home (/) / Design Center (/design/design-center:DESIGN)
/ Development Boards and Designs (/design/design-center/development-boards-and-designs:EVDEBRDSSYS)
/ General-Purpose MCUs (/design/design-center/development-boards-and-designs/general-purpose-mcus:FREDEVPLA)
/ FRDM-RW612 | MCUXpresso | Wi-Fi 6 | Tri-Radio

FRDM Development Board for RW612 Wi-Fi 6 + Bluetooth Low Energy + 802.15.4 Tri-Radio Wireless MCU

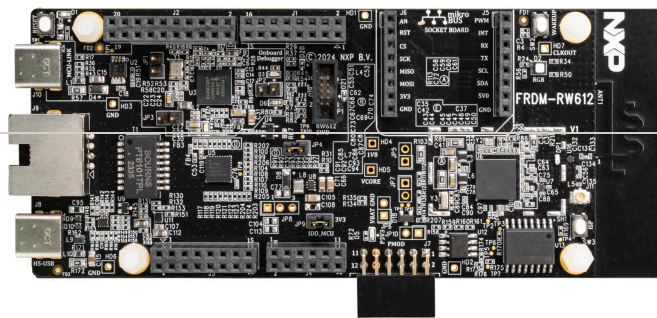
FRDM-RW612 **NEW** **ACTIVE** [Receive alerts !\[\]\(e3f8612927870f2e0f9f5989e6dd3064_img.jpg\)](#)



FRDM Development Board for RW612 Wi-Fi 6 + Bluetooth Low Energy + 802.15.4 Tri-Radio

Wireless MCU

NEW **ACTIVE**



Roll over image to zoom in

assets/ima board-ima assets/ima board-ima assets/ima board-ima



FRDM-RW612 is a compact and scalable development board for rapid prototyping of the RW61x family of Wi-Fi 6 + Bluetooth Low Energy + 802.15.4 tri-radio wireless MCUs.

It offers easy access to the MCU's I/Os and peripherals, integrated open-standard serial interfaces, external flash memory and on-board MCU-Link debugger.

NXP's Expansion Board Hub (/design/design-center/software/development-software/expansion-board-hub:EXP-BOARD-HUB) for add-on boards, the Application Code Hub (/design/design-center/software/development-software/mcuxpresso-software-and-tools/application-code-hub:APP-CODE-HUB) for software examples and more are available through the MCUXpresso Developer Experience (/design/design-center/software/development-software/mcuxpresso-software-and-tools:MCUXPRESSO).

Overview | Product Details | Design Resources | Support | BUY OPTIONS

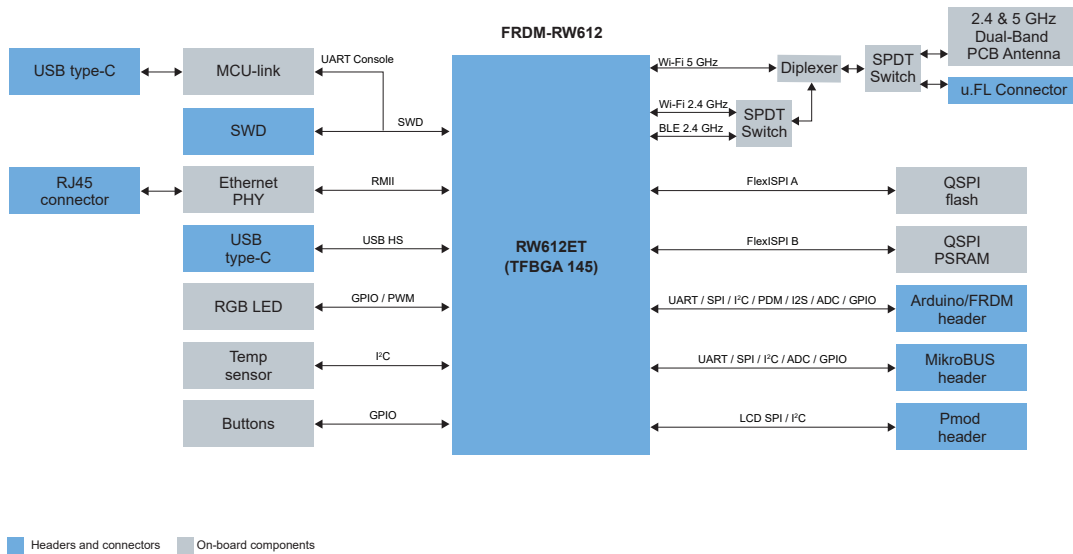
SOFTWARE

Product Details

Block Diagram | Supported Devices | Features | Hardware | Applications

Block Diagram

FRDM-RW612



GET DIAGRAM PDF (/ASSETS/BLOCK-DIAGRAM/EN/FRDM-RW612.PDF)



Supported Devices

Wireless Connectivity

- [Wi-Fi® + Bluetooth® + 802.15.4](#)
[Product Details](#)
[Design Resources](#)
[Support](#)
[BUY OPTIONS](#)
-
- **RW610** (/products/wireless-connectivity/wi-fi-plus-bluetooth-plus-802-15-4/wireless-mcu-with-integrated-radio-1x1-wi-fi-6-plus-bluetooth-low-energy-5-4-radios:RW610): Wireless MCU with Integrated Radio: 1x1 Wi-Fi® 6 + Bluetooth® Low Energy 5.4 Radios
 - **RW612** (/products/wireless-connectivity/wi-fi-plus-bluetooth-plus-802-15-4/wireless-mcu-with-integrated-tri-radio-1x1-wi-fi-6-plus-bluetooth-low-energy-5-4-802-15-4:RW612): Wireless MCU with Integrated Tri-radio: 1x1 Wi-Fi® 6 + Bluetooth® Low Energy 5.4 / 802.15.4

Power Management

- Load Switches
- **NX5P3090UK** (/products/power-management/load-switches/usb-pd-and-type-c-current-limited-power-switch:NX5P3090UK): USB PD and Type-C Current-Limited Power Switch

Sensors

- I3C/I²C Digital Temp. Sensors
- **P3T1755DP** (/products/sensors/i3c-ic-digital-temp-sensors/i3c-ic-bus-0-5-c-accurate-digital-temperature-sensor:P3T1755DP): I3C/I²C-Bus ±0.5 °C Accurate Digital Temperature Sensor

Features

Microcontroller

- RW612 Arm™ Cortex™-M33 core @260MHz with optimized performance efficiency, 1.2 MB on-chip SRAM

Memory Expansion

- Winbond QSPI flash (512Mbit): W25Q512JV
- AP Memory QSPI pSRAM (64 Mbit): APS6404L-SQN-SN


Connectivity

- SPI/I2C/UART connector (mikroBUS, Pmod™)
- Ethernet Phy and connector
- HS USB Type-C connectors
- Dual-band, 1x1 Wi-Fi 6 radio with 20 MHz channel bandwidth
- Bluetooth LE radio
- 802.15.4 radio supporting Zigbee and Thread

Debug

- On-board MCU-Link debugger with CMSIS-DAP
- JTAG/SWD connector

Sensor

- P3T1755 (/products/sensors/i3c-ic-digital-temp-sensors/i3c-ic-bus-0-5-c-accurate-digital-temperature-sensor:P3T1755DP) I3C temperature sensor 

Expansion Options

- Arduino® Header (with FRDM expansion rows)
- FRDM Header
- Pmod™

[Overview](#)[Product Details](#)[Design Resources](#)[Support](#)[BUY OPTIONS](#)**User Interface**

- RGB user LED, Reset, ISP, Wakeup buttons

Less ^

Hardware

EVALUATION BOARD

3.5" TFT LCD Module (/design/design-center/development-boards-and-designs/general-purpose-mcus/3-5-480x320-ips-tft-lcd-module:LCD-PAR-S035)

The LCD-PAR-S035 is a 3.5" 480x320 IPS TFT LCD module with wide viewing angle and 5-point capacitive touch functionality.

LCD-PAR-S035

Applications**Industrial**

[Air Conditioning \(AC\) \(/applications/smart-home/smart-appliance/air-conditioning-ac:AIR-CONDITIONING\)](#)

[Electricity Meter \(/applications/industrial/power-and-energy/electricity-meter:ELECTRICITY-METER\)](#)

[EV Supply Equipment \(EVSE\) \(/applications/smart-city/infrastructure/ev-supply-equipment-evse:EV-CHARGER-STATION\)](#)

[Factory Automation](#)

[Industrial HMI \(/applications/industrial/factory-automation/industrial-hmi:INDUSTRIAL-HMI\)](#)

[Vital Signs Monitors \(/applications/industrial/secure-healthcare-solutions/vital-signs-monitors:VITAL-SIGN-MONITORS\)](#)

[Overview](#)

[Product Details](#)

[Design Resources ⓘ](#)

[Support](#)

[BUY OPTIONS](#)

Smart City

[Smart Lock \(/applications/smart-city/access/smart-lock:SMART-LOCK\)](#)

Smart Home

[Home Control Panel \(/applications/smart-home/smart-appliance/home-control-panel:HOME-CONTROL-PANEL\)](#)

[Home Security and Surveillance \(/applications/smart-home/home-control-and-security/home-security-and-surveillance:HOME-SECURITY-SURVEILLANCE\)](#)

[Major Home Appliances \(/applications/smart-home/smart-appliance/major-home-appliances:MAJOR-HOME-APPLIANCE\)](#)

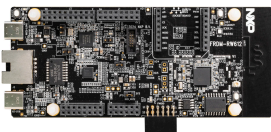
Buy Options

FRDM-RW612 (/part/FRDM-RW612)

FRDM Development Board for RW612 Wi-Fi 6 + Bluetooth Low Energy + 802.15.4 Tri-Radio Wireless MCU.

Kit Contains

- FRDM-RW612
- Quick Start Guide
- USB Cable Type-C



Click to expand

