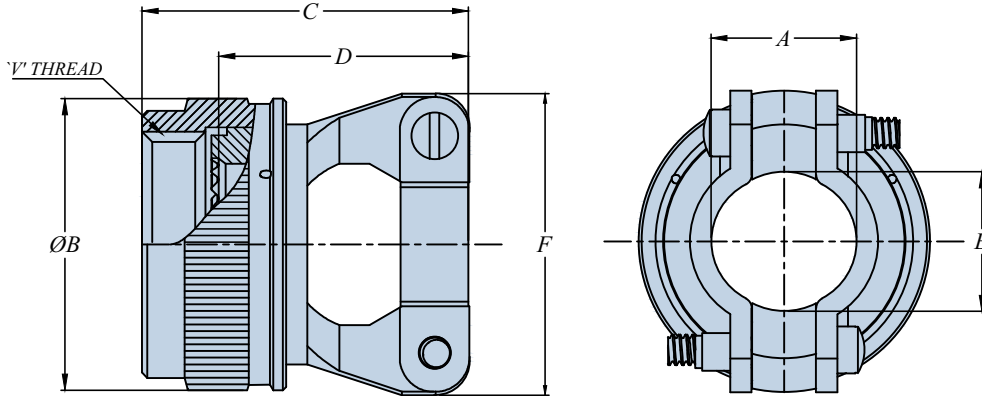


AS85049/124

Straight Strain Relief Self-Locking or Non-Self-Locking

Connector Group : L

FOR MIL-DTL-38999 Series III & IV
EN3645



REQUIREMENTS

1. All requirements shall consist of this document and the latest issue of AS85049.
2. Interface dimensions: shall conform to AS85049,
3. Material and finish: in accordance with AS85049
4. Dimensions are in inches and apply after plating.
5. For the non-self-locking coupling nut configuration (dash "-"), three (3) equally spaced holes shall be provided with option "H" and shall accommodate .020 maximum safety wire.
6. 1 cable entry is measured with saddle bars closed and bottomed on clamp ears.
7. 2 the "D" dimension is measured from the bottom of the accessory teeth to the end of the strain relief.

PART NUMBERING

M85049/124-11WH

M85049/124	-	11	W	H
BASIC PART NUMBER	" " (DASH) FOR NON SELF-LOCKING "S" FOR DETENTED SELF-LOCKING "N" FOR NON-DETENTED SELF-LOCKING	SHELL SIZE (09 TO 25)	(Material and Finish Designator) N = Aluminum, Electroless Nickel W = Aluminum, Cadmium Olive Drab A = Aluminum, Black Anodize Z = Aluminum, Zinc Nickel	OPTION "H" SUPPLIED WITH SAFETY WIRE HOLES, SEE NOTE. (OMIT FOR NONE)

TABLE-1 : SHELL SIZE AND DIMENSIONS.

DASH NO.	SHELL SIZE CODE (REF)	V THREAD	A ±.031 DIM 1/		ØB MAX		C MAX OVERALL LENGTH		D LENGTH 2/				E MIN		F MAX	
			INCH	MM	INCH	MM	INCH	MM	MIN		MAX		INCH	MM	INCH	MM
									INCH	MM	INCH	MM				
09	A	M12X1.0-6H	0.219	5.56	0.858	21.79	1.01	25.65	0.51	12.95	0.77	19.56	0.22	5.59	0.88	22.35
11	B	M15X1.0-6H	0.264	6.71	0.984	24.99	1.13	28.70	0.64	16.26	0.89	22.61	0.27	6.86	0.94	23.88
13	C	M18X1.0-6H	0.344	8.74	1.157	29.39	1.25	31.75	0.76	19.30	1.01	25.65	0.35	8.89	1.12	28.45
15	D	M22X1.0-6H	0.460	11.68	1.279	32.49	1.25	31.75	0.76	19.30	1.01	25.65	0.47	11.94	1.19	30.23
17	E	M25X1.0-6H	0.545	13.84	1.406	35.71	1.37	34.80	0.88	22.35	1.13	28.70	0.55	13.97	1.44	36.58
19	F	M28X1.0-6H	0.615	15.62	1.516	38.51	1.62	41.15	1.13	28.70	1.38	35.05	0.62	15.75	1.56	39.62
21	G	M31X1.0-6H	0.698	17.73	1.642	41.71	1.75	44.45	1.26	32.00	1.51	38.35	0.70	17.78	1.69	42.93
23	H	M34X1.0-6H	0.780	19.81	1.768	44.91	1.87	47.50	1.38	35.05	1.63	41.40	0.78	19.81	1.75	44.45
25	J	M37X1.0-6H	0.850	21.59	1.869	47.47	2.00	50.80	1.51	38.35	1.76	44.70	0.85	21.59	1.88	47.75