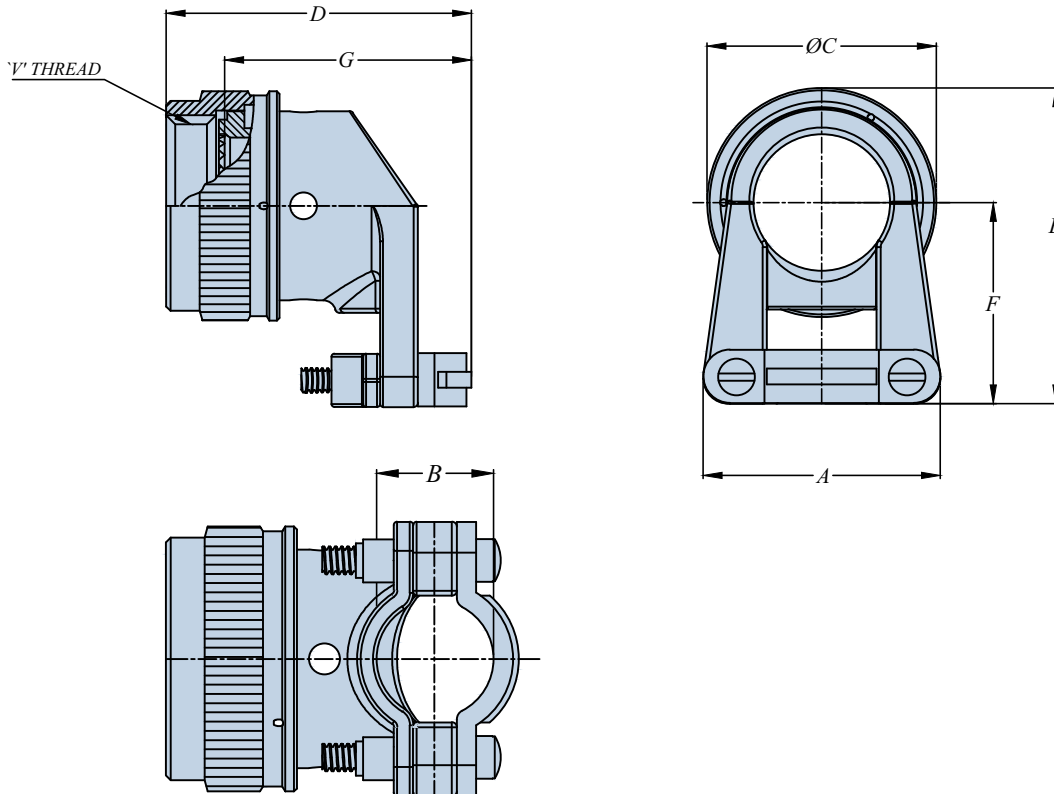


AS85049/126

90° Strain Relief Self-Locking or Non-Self-Locking

Connector Group : L

FOR MIL-DTL-38999 Series III & IV
EN3645



REQUIREMENTS

1. All requirements shall consist of this document and the latest issue of AS85049.
2. Interface dimensions: shall conform to AS85049,
3. Material and finish: in accordance with AS85049
4. Dimensions are in inches and apply after plating.
5. For the non-self-locking coupling nut configuration (dash "-"), three (3) equally spaced holes shall be provided with option "H" and shall accommodate .020 maximum safety wire.
6. 1 cable entry is measured with saddle bars closed and bottomed on clamp ears.
7. 2 the "G" dimension is measured from the bottom of the accessory teeth to the end of the strain relief.

PART NUMBERING

M85049/126-11WH

M85049/126	S	11	W	H
BASIC PART NUMBER	" - " (DASH) FOR NON SELF-LOCKING " S " FOR DETENTED SELF-LOCKING " N " FOR NON-DETENTED SELF-LOCKING	SHELL SIZE (09 TO 25)	(Material and Finish Designator) N = Aluminum, Electroless Nickel W = Aluminum, Cadmium Olive Drab A = Aluminum, Black Anodize Z = Aluminum, Zinc Nickel	OPTION "H" SUPPLIED WITH SAFETY WIRE HOLES, SEE NOTE. (OMIT FOR NONE)

AS85049/126

90° Strain Relief Self-Locking or Non-Self-Locking

TABLE-1 : SHELL SIZE AND DIMENSIONS.

CONNECT OR SHELL SIZE	SHELL SIZE CODE (REF)	V THREAD	A MAX		B ±.031(0.79) DIM <u>1/</u>		ØC MAX		D MAX OVERALL LENGTH		E MAX		F MAX		G MAX LENGTH <u>2/</u>	
			INCH	MM	INCH	MM	INCH	MM	INCH	MM	INCH	MM	INCH	MM	INCH	MM
09	A	M12X1.0-6H	0.88	22.35	0.22	5.56	0.86	21.79	1.14	28.96	1.24	31.50	0.81	20.57	0.86	21.84
11	B	M15X1.0-6H	0.94	23.88	0.26	6.71	0.98	24.99	1.22	30.99	1.36	34.54	0.87	22.10	0.94	23.88
13	C	M18X1.0-6H	1.12	28.45	0.34	8.74	1.16	29.39	1.42	36.07	1.51	38.35	0.93	23.62	1.14	28.96
15	D	M22X1.0-6H	1.19	30.23	0.46	11.68	1.28	32.49	1.48	37.59	1.63	41.40	0.99	25.15	1.20	30.48
17	E	M25X1.0-6H	1.44	36.58	0.55	13.84	1.41	35.71	1.62	41.15	1.76	44.70	1.09	27.69	1.34	34.04
19	F	M28X1.0-6H	1.56	39.62	0.62	15.62	1.52	38.51	1.74	44.20	1.99	50.55	1.23	31.24	1.46	37.08
21	G	M31X1.0-6H	1.69	42.93	0.70	17.73	1.64	41.71	1.86	47.24	2.12	53.85	1.30	33.02	1.58	40.13
23	H	M34X1.0-6H	1.75	44.45	0.78	19.81	1.77	44.91	1.99	50.55	2.24	56.90	1.36	34.54	1.71	43.43
25	J	M37X1.0-6H	1.88	47.75	0.85	21.59	1.87	47.47	2.11	53.59	2.35	59.69	1.42	36.07	1.83	46.48