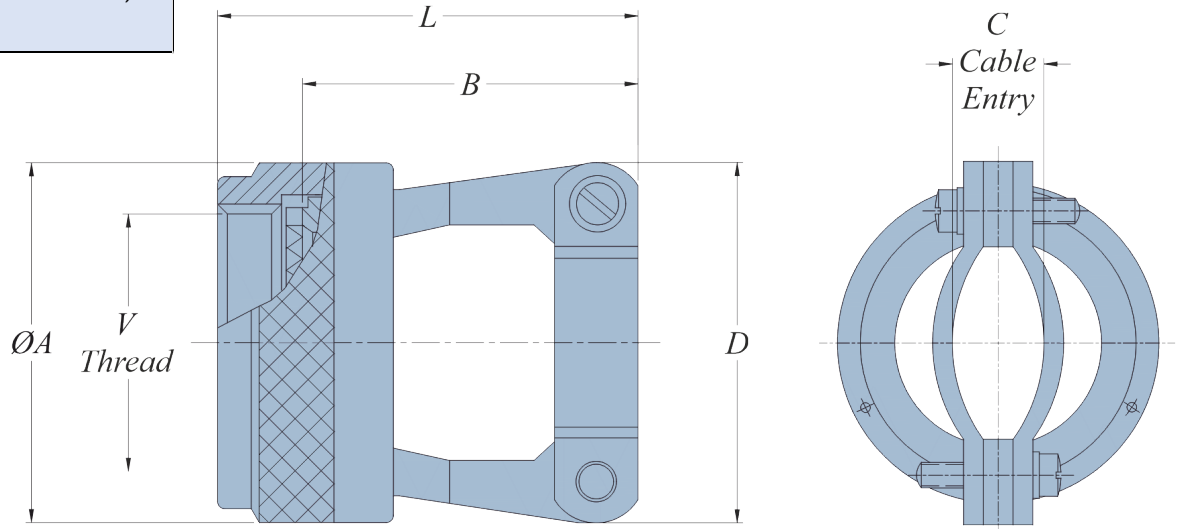


AS85049/38

Straight Strain Relief Self- Locking or Non-self-Locking

Connector Group : L
FOR MIL-DTL-38999 SERIES III AND IV,
EN3645



REQUIREMENTS

1. All requirements shall consist of this document and the latest issue of AS85049.
2. Interface dimensions: shall conform to AS85049.
3. Material and finish: in accordance with AS85049
4. Dimensions are in inches and apply after plating.

PART NUMBERING

M85049/38S11W

M85049/38	S	11	W
BASIC PART NUMBER	<p>"S" = Detented Self-Locking "N" = Non -Detented Self-Locking "-" = (DASH) Non -Self-Locking</p>	<p>Shell Size Refer Table-1 (09 to25)</p>	<p>(Material and Finish Dsignator) N = Aluminum, Electroless Nickel W = Aluminum, Cadmium Olive Drab A = Aluminum, Black Anodize S = Stainless Steel, Passivate</p>

TABLE-1 : SHELL SIZE AND DIMENSIONS FOR AS85049/38 SERIES.

SHELL SIZE	MIL-DTL-38999 SHELL SIZE		V THREAD CLASS - 2B	ØA SELF - LOCKING		ØA NON SELF - LOCKING		ØB MAX (ONLY SELF - LOCKING)		CABLE ENTRY				D MAX DIA		L MAX (NON SELF - LOCKING)	
	SERIES III	SERIES IV		INCH	MM	INCH	MM	INCH	MM	MAX		MIN		INCH	MM	INCH	MM
										INCH	MM	INCH	MM				
9	9 (A)	--	M12 X 1.0 - 6H	0.858	21.79	0.750	19.05	0.91	23.11	0.098	2.49	0.234	5.94	0.850	21.59	1.100	27.94
11	11 (B)	11 (B)	M15 X 1.0 - 6H	0.984	24.99	0.850	21.59	0.91	23.11	0.153	3.89	0.234	5.94	0.900	22.86	1.100	27.94
13	13 (C)	13 (C)	M18 X 1.0 - 6H	1.157	29.39	1.000	25.40	1.01	25.65	0.190	4.83	0.328	8.33	1.100	27.94	1.200	30.48
15	15 (D)	15 (D)	M22 X 1.0 - 6H	1.279	32.49	1.100	27.94	1.06	26.92	0.260	6.60	0.457	11.61	1.150	29.21	1.250	31.75
17	17 (E)	17 (E)	M25 X 1.0 - 6H	1.406	35.71	1.250	31.75	1.16	29.46	0.283	7.19	0.614	15.60	1.300	33.02	1.350	34.29
19	19 (F)	19 (F)	M28 X 1.0 - 6H	1.516	38.51	1.400	35.56	1.41	35.81	0.325	8.26	0.634	16.10	1.500	38.10	1.600	40.64
21	21 (G)	21 (G)	M31 X 1.0 - 6H	1.642	41.71	1.500	38.10	1.51	38.35	0.343	8.71	0.698	17.73	1.600	40.64	1.700	43.18
23	23 (H)	23 (H)	M34 X 1.0 - 6H	1.768	44.91	1.650	41.91	1.66	42.16	0.381	9.68	0.823	20.90	1.700	43.18	1.850	46.99
25	25 (J)	25 (J)	M37 X 1.0 - 6H	1.889	47.98	1.750	44.45	1.76	44.70	0.418	10.62	0.853	21.67	1.800	45.72	1.950	49.53