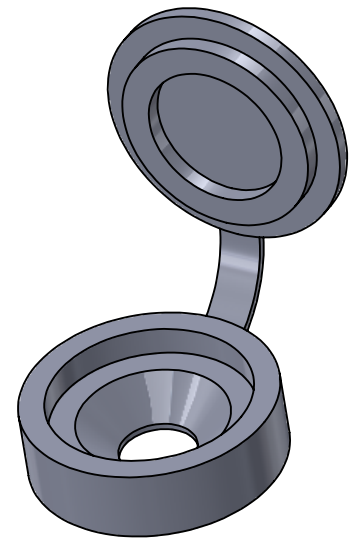
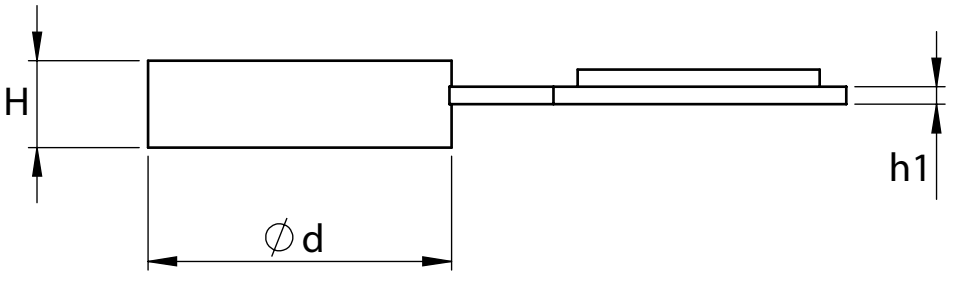
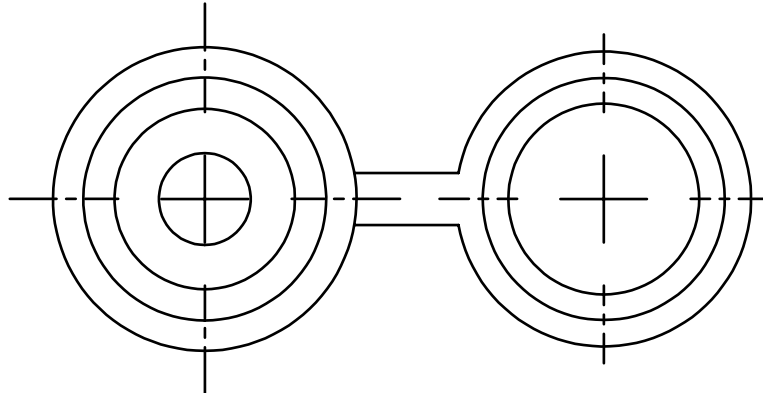


| Part Number | Screw Size | D | H | h1 | Colour |
|--------------|------------|------|-----|-----|--------|
| RP0000383260 | M3.5 to M6 | 13.6 | 3.4 | 1.0 | Black |
| RP0000383263 | M3.5 to M6 | 13.6 | 3.4 | 1.0 | White |
| RP0000383278 | M5 to M6 | 17.5 | 5.0 | 1.0 | Black |
| RP0000383265 | M5 to M6 | 17.5 | 5.0 | 1.0 | White |

| REVISION | |
|----------|----------------------------|
| A | INITIAL DRAWING 02.02.2024 |
| | |
| | |



NOTES: DO NOT SCALE DRAWING



UNLESS OTHERWISE SPECIFIED:
DIMENSIONS ARE IN MM (MILLIMETERS).
TOLERANCES: L<=4: ±0.1
4 < L <=15: ±0.2
15 < L <=50: ±0.3
50 < L <=100: ±0.4

| NAME | DATE |
|-----------------------|----------|
| DRAWN Andrew Fletcher | 08.08.24 |
| CHK'D | |
| APPVD | |

MATERIAL: POLYPROPYLENE
HEAT TREATMENT: N/A

TITLE: HINGED SCREW CAPS

DESIGN RIGHT. TR FASTENINGS LTD, 2024
UNDER NO CIRCUMSTANCES MUST THIS DRAWING BE COPIED
OR DISCLOSED WITHOUT FIRST OBTAINING WRITTEN
AUTHORITY.

CUSTOMER PART NUMBER: N/A

FINISH/COLOUR: SEE TABLE

DRAWING NUMBER: N/A