



Connectors > Connector Accessories > Connector Hardware



Hardware Accessory Function: **Mounting**

Primary Product Color: **Black**

Primary Product Material: **PC-ABS**

Operating Temperature (Max): **100 °C**

Operating Temperature Range: **-40 – 100 °C**

Features

Product Type Features

Hardware Accessory Function	Mounting
-----------------------------	----------

Body Features

Primary Product Color	Black
Primary Product Material	PC-ABS

Dimensions

Product Width	70 mm
Product Length	114.9 mm
Product Height	20 mm

Usage Conditions

Operating Temperature (Max)	100 °C
Operating Temperature Range	-40 – 100 °C

Industry Standards

UL Flammability Rating	UL 94V-0
------------------------	----------

Packaging Features

Packaging Method	Box & Tray
------------------	------------

Product Compliance

[For compliance documentation, visit the product page on TE.com>](#)

EU RoHS Directive 2011/65/EU	Compliant
EU ELV Directive 2000/53/EC	Not Yet Reviewed
China RoHS 2 Directive MIIT Order No 32, 2016	No Restricted Materials Above Threshold
EU REACH Regulation (EC) No. 1907/2006	Current ECHA Candidate List: JUNE 2024 (241) Candidate List Declared Against: JUNE 2024 (241) Does not contain REACH SVHC
Halogen Content	Low Halogen - Br, Cl, F, I < 900 ppm per homogenous material. Also BFR/CFR/PVC Free
Solder Process Capability	Not reviewed for solder process capability

Product Compliance Disclaimer

This information is provided based on reasonable inquiry of our suppliers and represents our current actual knowledge based on the information they provided. This information is subject to change. The part numbers that TE has identified as EU RoHS compliant have a maximum concentration of 0.1% by weight in homogenous materials for lead, hexavalent chromium, mercury, PBB, PBDE, DBP, BBP, DEHP, DIBP, and 0.01% for cadmium, or qualify for an exemption to these limits as defined in the Annexes of Directive 2011/65/EU (RoHS2). Finished electrical and electronic equipment products will be CE marked as required by Directive 2011/65/EU. Components may not be CE marked. Additionally, the part numbers that TE has identified as EU ELV compliant have a maximum concentration of 0.1% by weight in homogenous materials for lead, hexavalent chromium, and mercury, and 0.01% for cadmium, or qualify for an exemption to these limits as defined in the Annexes of Directive 2000/53/EC (ELV). Regarding the REACH Regulations, TE's information on SVHC in articles for this part number is still based on the European Chemical Agency (ECHA) 'Guidance on requirements for substances in articles' (Version: 2, April 2011), applying the 0.1% weight on weight concentration threshold at the finished product level. TE is aware of the European Court of Justice ruling of September 10th, 2015 also known as O5A (Once An Article Always An Article) stating that, in case of 'complex object', the threshold for a SVHC must be applied to both the product as a whole and simultaneously to each of the articles forming part of its composition. TE has evaluated this ruling based on the new ECHA "Guidance on requirements for substances in articles" (June 2017, version 4.0) and will be updating its statements accordingly.

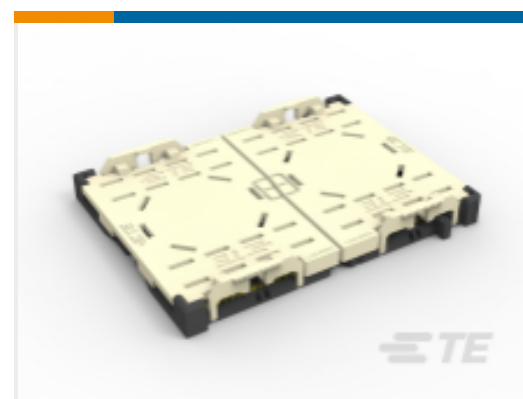
Compatible Parts



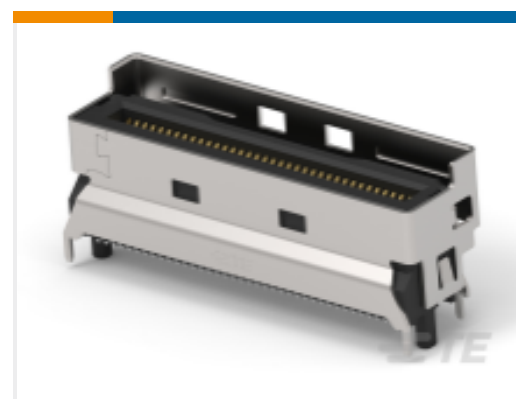
Customers Also Bought



TE Part #6123001-1
0.8FH,P08H.5,040,30/Sn,TR,SC



TE Part #1-2324271-3
RIGHT SEGMENT LGA4189-4
SOCKETP4 FOR ODM



TE Part #1-2379397-5
MCIO INTERGRATED CONN, V/T,8X,
SMT TYPE



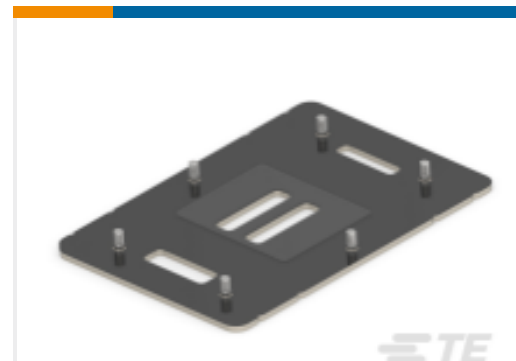
TE Part #1-2381578-7
MCIO INTERGRATED CONN, V/T,
124P SMT TYPE



TE Part #1-2397198-1
SOCKET 4710 FOR ODM



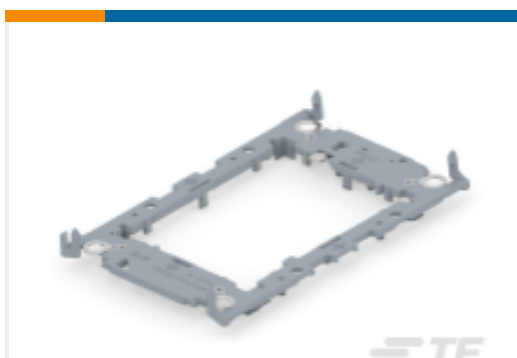
TE Part #2405568-1
LGA4710 TFLM ASSEMBLY W/O
COVER



TE Part #2405569-1
LGA4710 BACKPLATE ASSY,SHORT
STUD



TE Part #2405570-1
LGA4710 E2A CARRIER ASSY



TE Part #2405570-2
LGA4710 E2B CARRIER ASSY



TE Part #2274483-6
USB 3.0 RA RECEPTACLE

Documents

Product Drawings

[LGA4677/LGA4710 SOCKET COVER](#)

English

CAD Files

Customer View Model

[ENG_CVM_CVM_1-2351053-3_A.3d_stp.zip](#)

English

3D PDF

3D

Customer View Model

[ENG_CVM_CVM_1-2351053-3_A.3d_igs.zip](#)

English

Customer View Model

[ENG_CVM_CVM_1-2351053-3_A.2d_dxf.zip](#)

English

By downloading the CAD file I accept and agree to the [Terms and Conditions](#) of use.