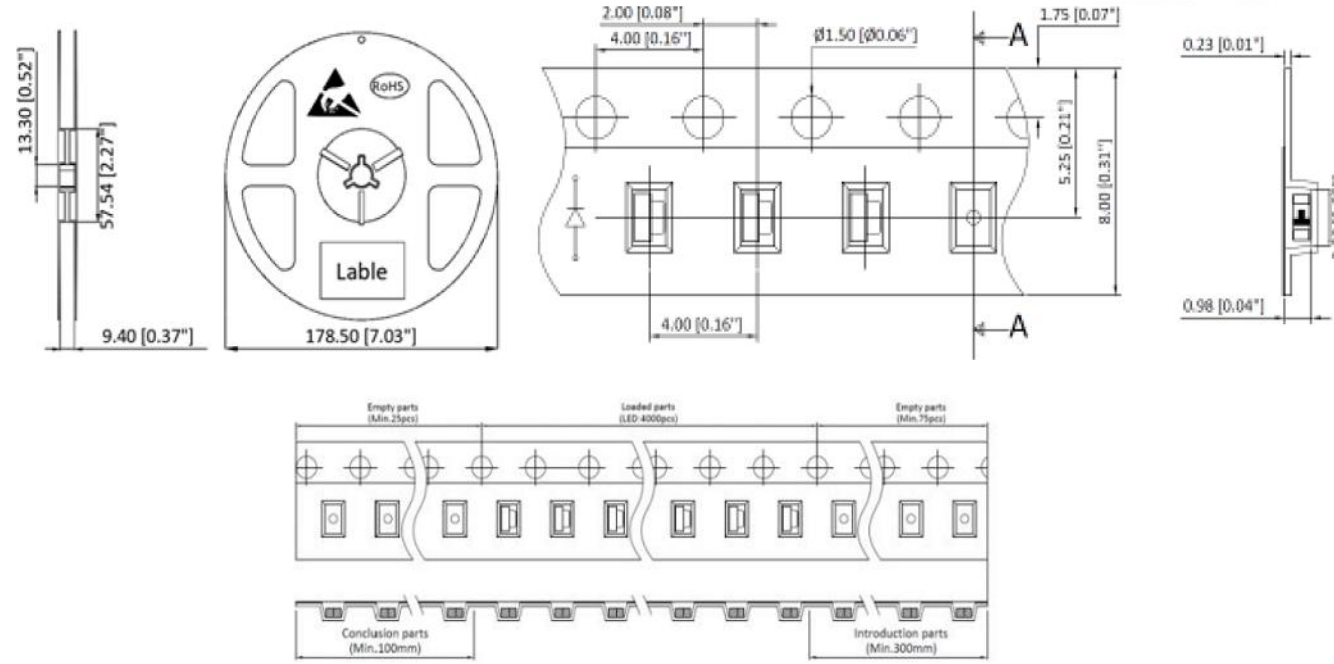


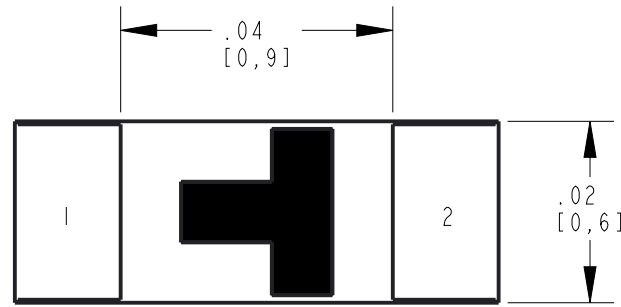
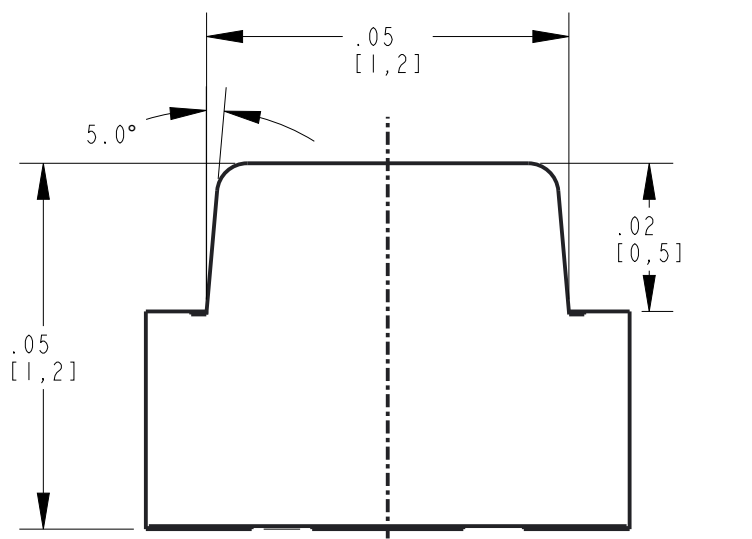
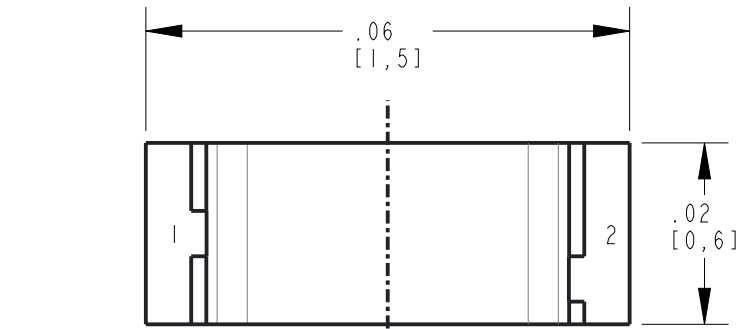
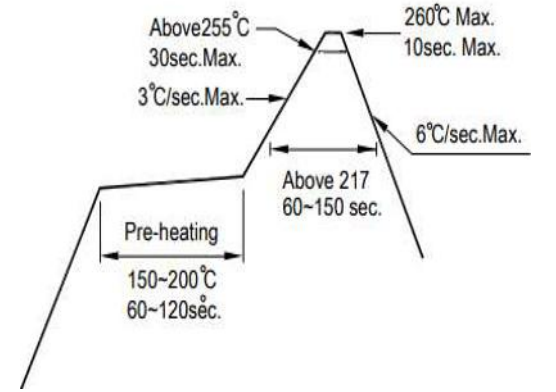
REV	ECN NO	REVISIONS	DRN	CKD	APP	QA	CM	DATE
A	122626	NEW RELEASE	LD	CS				10-8-24

TAPE & REEL PACKAGING

TOLERANCE = ±.004"



SOLDER TEMPERATURE PROFILE



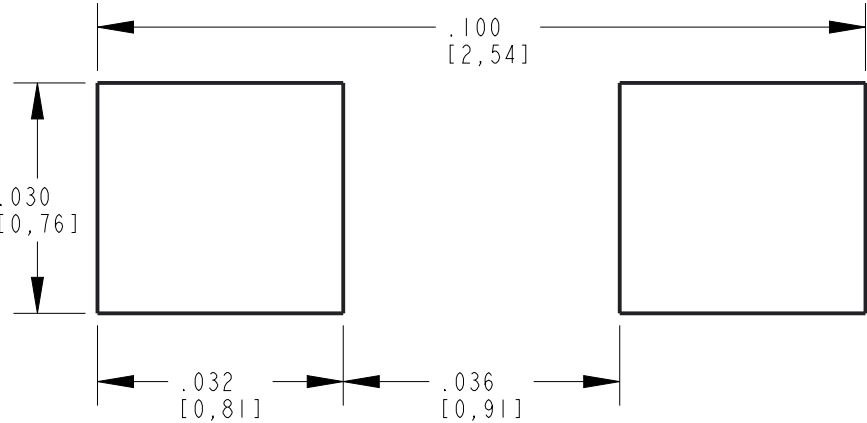
DIALIGHT PART NUMBER	COLOR	LUMINOUS INTENSITY @ I _F = 20 mA (mcd)			FORWARD VOLTAGE @ I _F = 20 mA (V)			REVERSE CURRENT (µA)	DOM. WAVELENGTH @ I _F = 20 mA (nm)			VIEWING ANGLE (DEG)
		MIN	TYP	MAX	MIN	TYP	MAX		MIN	TYP	MAX	
598-8D11-127F	RED	66	—	190	1.8	—	2.4	10	630	—	640	120
598-8D21-127F	RED-ORANGE	86	—	321	1.8	—	2.4	10	618	—	630	
598-8D31-127F	ORANGE	112	—	321	1.8	—	2.4	10	600	—	610	
598-8D41-127F	YELLOW	86	—	321	1.8	—	2.4	10	584	—	594	
598-8D61-127F	YEL-GRN	30	—	112	1.8	—	2.4	10	566	—	576	
598-8D81-127F	TRUE GRN	320	—	917	2.8	—	3.6	10	520	—	530	
598-8D91-127F	BLUE	86	—	321	2.8	—	3.6	10	464	—	474	

	COLOR								UNITS
	RED	RED-ORANGE	ORANGE	YELLOW	YEL-GREEN	TRUE=GRN	BLUE		
POWER DISSIPATION	72	72	60	72	60	108	108	mW	
DC FORWARD CURRENT	30	30	25	30	25	30	30	mA	
PEAK FORWARD CURRENT (1/10 DUTY CYCLE, 0.1 ms PULSE)	125	125	125	125	125	125	125	mA	
DERATE LINEARLY FROM 25°C	.33	.33	.33	.33	.33	.33	.33	mA/°C	
REVERSE VOLTAGE	5								V
OPERATING TEMPERATURE	-40 TO +85	-40 TO +85	-40 TO +80	-40 TO +80	-40 TO +80	-40 TO +80	-40 TO +80	-20 to +85	°C
STORAGE TEMPERATURE	-40 TO +85	-40 TO +85	-40 TO +85	-40 TO +85	-40 TO +85	-40 TO +85	-40 TO +85	-30 to +100	°C
SOLDERING TEMPERATURE, FOR 10 SEC	260								°C



ATTENTION:
OBSERVE PRECAUTIONS FOR HANDLING ELECTROSTATIC SENSITIVE DEVICES

RECOMMENDED PAD LAYOUT



NOTES:

- PARTS ARE TO BE SUPPLIED IN 8mm CARRIER TAPE ON 7" REEL 4000 PCS PER REEL.
- PIN NUMBERS ARE FOR REFERENCE ONLY, DESIGNATION NON-EXISTENT ON PART.
- THIS ASSEMBLY CONTAINS ELECTROSTATIC DISCHARGE SENSITIVE DEVICES (ESDS). MAINTAIN ALL PRECAUTIONARY MEASURES DURING ASSEMBLY, HANDLING AND STORAGE IN ACCORDANCE WITH IPC-A-610.
- THIS PRODUCT IS RoHS COMPLIANT. EACH BAG IS TO BE MARKED WITH RoHS COMPLIANT LABEL OR EQUIVALENT MARKINGS. LED MUST BE Pb FREE.
- MOISTURE SENSITIVITY LEVEL IS 3.

THIS DRAWING AND THE CONTENTS HEREIN ARE CONFIDENTIAL AND THE SOLE PROPERTY OF DIALIGHT CORP. REPRODUCTION OF THIS DRAWING OR CONSTRUCTION OF ANY PARTS WITHIN THIS DRAWING ARE FORBIDDEN WITHOUT THE WRITTEN CONSENT OF DIALIGHT CORP.		
DIALIGHT CORP. INTERNAL REFERENCE ONLY = 3D MODEL : 5988DXX127F-A.6		
SCALE: 40.000	DRAWING NUMBER	REV
ALL DIM's: INCH (mm)	C-18784	A
TOLERANCES: UNLESS OTHERWISE SPECIFIED	TITLE	
FRACTIONS: ±1/64	0605 RIGHT ANGLE SMD LED	
DECIMALS (.XX): ±.01	MATERIAL	
DECIMALS (.XXX): ±.005	Dialight	
DECIMALS (.XXXX): ±.0005	1501 ROUTE 34 SOUTH FARMINGDALE, NJ 07727 (732) 919-3119 www.dialight.com	
ANGLES: ±1°	FSCM 83330	SHEET 1 OF 1 FAMILY TABLE: