

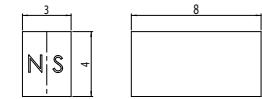
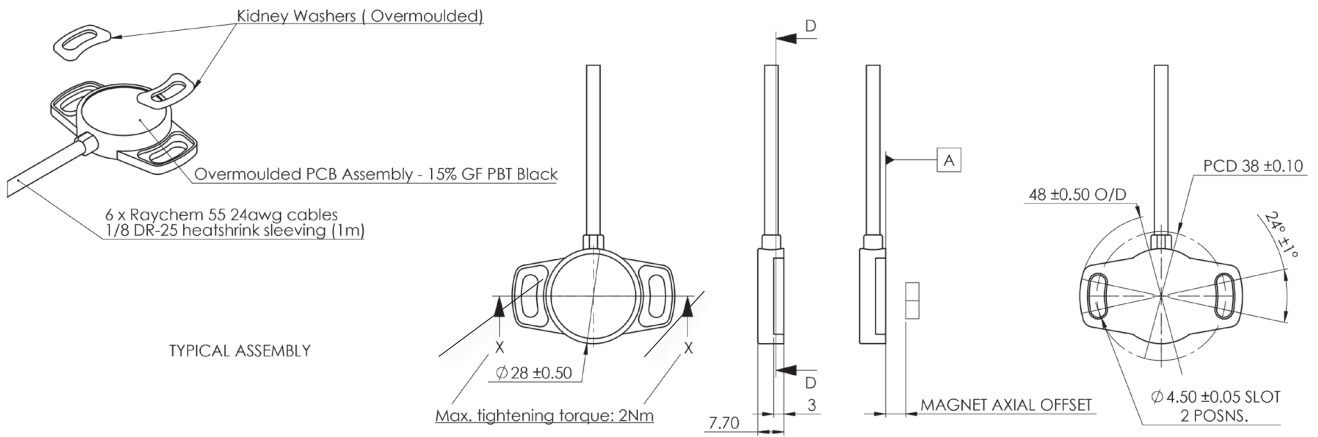
Based on the well proven 28 mm diameter Euro-XP angle sensor, the puck option is a two piece design with a separate magnet. With redundant output this compact and fully non-contacting Hall Effect sensor features IP68 sealing and will suit arduous high-duty cycle position feedback applications.

Specifications	
Mechanical	
Typical Life Cycle	In excess of 100 million cycles
Measuring range	360° redundant, signal 1 cw, signal 2 ccw
Housing	High grade temperature resistant plastic
Tightening torque	Maximum recommended tightening Torque 2Nm
Mounting	Customer to ensure correct suitability and fitment of mounting bolts
Environmental	
Operating temperature	-40° C to +125° C (Short term 150° C)
Vibration	20...2000 Hz; Amax = 0.75 mm; amax = 31.4 g to IEC 60068-2-6
Electrical	
Supply Voltage	5V +/- 0.5V
Output signal	Ratiometric 5%...95% of supply (+/-25mv of specified electrical output range for both start & end voltage) PWM frequency 100Hz... 1000Hz, 1000Hz default, duty cycle between 5%-95%
Independant linearity	+/- 0.5% of each signal range
Sample Rate (Fast Mode)	5 kHz
System Propagation Delay (Fast Mode)	600 µs
Isolation resistance	200 MΩ (500 VDC, 1 bar, 2s)
Electrical connection	See ordering code/wiring diagram
Cable Type	Raychem Spec 55, 24 AWC; Sleeving - Raychem DR25
MTTFd	370 years

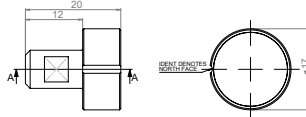
EURO XPK PUCK TYPE PROGRAMMABLE SENSOR



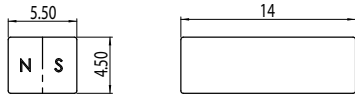
Dimensions in mm



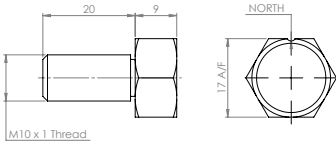
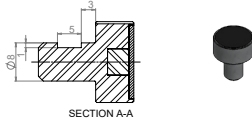
Small magnet -01



Plug magnet -04



Large magnet -03

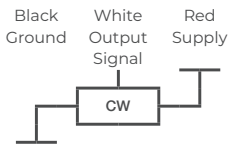


M10 magnet - 02

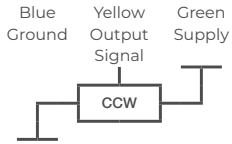
Notes for magnets: Maximum permitted radial offset = +/- 1 mm

Magnet type	Distance from XPK Face
M10 Screw Magnet	0,5 - 5 mm
Small Magnet	0 - 2 mm
Large Magnet	1,5 - 6 mm
Plug Magnet	0,5 - 5 mm

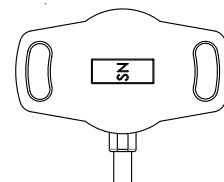
CHANNEL 1 CW



CHANNEL 2 CCW



ORIENTATION - midpoint of electrical travel shown



Mating face of XPK

EURO XPK PUCK TYPE PROGRAMMABLE SENSOR



Ordering information

(Please use the characters in the chart below to construct your product code)

Sample Code	Euro-XPK	-	2838	-	8xx	-	2 1 4	-	911	-	00*
Series	Euro-XPK										
Mechanical version	38 = separate Puck und Magnet Design										
Electrical Angle	36 = Standard electrical angle 360° xx = Optional angle - from 30° to 360°/ in 10° steps (z.B. 08=80°)										
Supply voltage Ub	2 = Ub = 5 VDC										
Interface parameters	1 = 5..95%, ratiometric to supply voltage Ub (0,25..4,75 VDC) 2 = 10..90% ratiometric to supply voltage Ub (0,5..4,5 VDC) 3 = PMW										
Output characteristics	1 Rising characteristic cw 2 Rising characteristic ccw 4 Crossed outputs, channel 1 rising cw Other output characteristics on request										
Electrical Connection Cable Length	911 = Raychem Spec 55, 24 AWG; Sleeving - Raychem DR25 XL ETFE: Ø = 0,94 mm; 0,24 mm²; L = 500 mm (+/- 10 mm)										
Magnet choice	00 No magnet 01 Small magnet 02 Screw magnet 03 Large magnet 04 Plug magnet										

EURO XPK PUCK TYPE PROGRAMMABLE SENSOR



*** Note - Magnet options 01, 02, 03 or 04 are selected in the ordering code and a single magnet is included.**

Additional or alternative magnets can be ordered separately as spare parts using the following codes:

93816 - XPK Small Magnet-01

93817 - XPK M10 Magnet-02

93818 - XPK Large Magnet-03

94031 - XPK Plug Magnet-04

Un-housed magnets do not have polarity marked but can be marked if requested.

Custom magnet housings are available.

The following sensor models are available as standard products:

93753 Euro-XPk-2838-836-214-911-00

95293 Euro-XPk-2838-806-214-911-00

95294 Euro-XPk-2838-812-214-911-00

95295 Euro-XPk-2838-818-214-911-00

93816 XPK Small Magnet-01

93817 XPK M10 Magnet-02

93818 XPK Large Magnet-03

94031 XPK Plug Magnet-04