

CLP110

- Snap-on mounting
- single elements
- single packaging or bulk packaging

Data

Ordering data

| | |
|-------------------------------|---------------|
| Product type description | CLP110 |
| Article number (order number) | 103040379 |
| EAN (European Article Number) | 4030661553733 |
| eCl@ss number, version 12.0 | 27-37-13-02 |
| eCl@ss number, version 11.0 | 27-37-13-02 |
| eCl@ss number, version 9.0 | 27-37-13-02 |
| ETIM number, version 7.0 | EC000041 |
| ETIM number, version 6.0 | EC000041 |

General data

| | |
|------------------|-----------------|
| Versions | Contact element |
| Design | Snap-on |
| Housing material | Plastic |
| Gross weight | 10 g |

General data - Features

| | |
|------------------|-----|
| Probing possible | Yes |
|------------------|-----|

Mechanical data

| | |
|--------------------------|----------------------|
| Mechanical life, minimum | 5,000,000 Operations |
| Mounting | Contact carrier |

Mechanical data - Connection technique

| | |
|----------------------------|---|
| Termination | Screw terminals |
| Cable section, minimum | 0.5 mm ² , rigid 0.5 mm ² , flexible |
| Cable section, maximum | 2.5 mm ² , rigid 1.5 mm ² , flexible |
| Note | All indications including the conductor ferrules. |
| Tightening torque of Clips | 1 Nm |

Mechanical data - Dimensions

| | |
|--------|-------|
| Length | 44 mm |
| Width | 9 mm |
| Height | 27 mm |

Ambient conditions

| | |
|--|------|
| Degree of protection of the switch rooms | IP40 |
| Degree of protection of clips or terminals | IP20 |

Ambient conditions - Insulation values

| | |
|---|--------|
| Rated insulation voltage U_i | 500 V |
| Rated impulse withstand voltage U_{imp} | 2.5 kV |

Electrical data

| | |
|----------------------|-----|
| Thermal test current | 6 A |
|----------------------|-----|

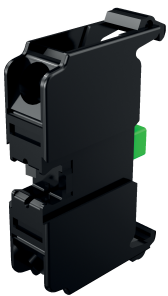
| | |
|--------------------------------------|--|
| Utilisation category AC-15 | 250 VAC |
| Utilisation category AC-15 | 6 A |
| Utilisation category DC-13 | 24 VDC |
| Utilisation category DC-13 | 3 A |
| Suitable for low-voltages | $\geq 5 \text{ V} / \geq 1 \text{ mA}$ |
| Switching element | Normally open contact (NO) |
| Note (Switching element) | green (= normally open) |
| Switching principle | Slow action |
| Maximum switching frequency | 1,200 /h |
| Material of the contacts, electrical | Silver |
| Contact labelling | 3 - 4 |

Other data

| | |
|---------------------|--|
| Note (applications) | Compatible with SMF contact carrier Contact element, Product line CLP, Type series CLP, Front mounting switch |
|---------------------|--|

Pictures

Product picture (catalogue individual photo)



ID: kclp-f02

| 351.5 kB | .jpg | 352.425 x 566.208 mm - 999 x 1605 px - 72 dpi

| 42.3 kB | .png | 74.083 x 118.886 mm - 210 x 337 px - 72 dpi

| 28.5 kB | .jpg | 76.906 x 123.472 mm - 218 x 350 px - 72 dpi

Schmersal India Pvt. Ltd., Plot No - G-7/1, Ranjangaon MIDC, Tal. - Shirur, Dist.- Pune 412 220

The details and data referred to have been carefully checked. Images may diverge from original. Further technical data can be found in the manual. Technical amendments and errors possible.

Generated on: 11/11/2024, 5:24 am