

HHS16-BL-SW-2-POL-MP

- hygienic design
- with or without mounting plate
- lockable with a lock

Data

Ordering data

Product type description	HHS16-BL-SW-2-POL-MP
Article number (order number)	103044286
EAN (European Article Number)	4030661617855
eCl@ss number, version 12.0	27-37-14-03
eCl@ss number, version 11.0	27-37-14-03
eCl@ss number, version 9.0	27-37-14-03
ETIM number, version 7.0	EC000216
ETIM number, version 6.0	EC000216

Approvals - Standards

Certificates	hygiene tested
--------------	----------------

General data

Standards	EN IEC 60947-5-1 EN IEC 60204-1 DIN EN 1672-2 ANSI/UL 60947-1 ANSI/UL 60947-4-1A
-----------	--

Versions	Front plate mounting Main switch 16A
Design	Square Large marking plate
Note (Installation condition)	Recess for assembly 90 mm x 90 mm
Toggle	long
Sealing type	Membrane Lip gaskets
Material of the operators	Plastic
Material of the front ring	stainless steel
Colour of the operating element	Black
Colour of the identification plate	Silver
Colour of the bracket	Silver
Colour of the front ring	Silver
Colour of the bellows	Blue
Gross weight	220 g

General data - Features

Latching	Yes
Number of switch positions	1
Number of main contacts	2

Mechanical data

Latching position	right
Mechanical life, minimum	1,000,000 Operations
Switching angle, right	90 °
Mounting	central nut
Tightening torque of the screw	2 Nm
Tightening torque of nuts, maximum	4 Nm
Mounting position main contacts	0°

Mechanical data - Connection technique

Termination	Screw terminals
Cable section, minimum	1 mm ² , rigid 1 mm ² , flexible
Cable section, maximum	2.5 mm ² , rigid 2.5 mm ² , flexible
Note	All indications including the conductor ferrules.
Wire cross-section	12 AWG
Tightening torque of Clips	2.5 Nm

Mechanical data - Dimensions

Width	110 mm
Mounting height	37 mm
Note (Mounting height)	Height in front of the front panel.
Mounting depth	58 mm
Note (Mounting depth)	Depth behind front panel including cam switch
diameters for the actuating heads	45 mm
Length of the handle	52.5 mm
Mounting diameter	22.3 mm
Thickness, of the front panel, minimum	1.5 mm
Thickness of the front panel, maximum	6 mm
Note	Size mounting plate 110 mm x 110 mm

Ambient conditions

Degree of protection	IP67 IP69K
Ambient temperature	+0 ... +80 °C

Ambient conditions - Insulation values

Rated impulse withstand voltage U_{imp}	4 kV
---	------

Electrical data

Thermal test current	20 A
Rated operating voltage	690 VAC
Required rated short-circuit current	10,000 A
Switching capacity, AC-3	5,500 W
Switching capacity, AC-23	7,500 W
Switching principle	Slow action

Other data

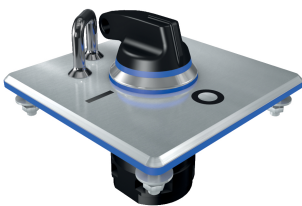
Note (applications)	Main switch with black toggle Rotary Cam Switch, Product line M200, Type series M220, Front mounting switch
---------------------	--

Scope of delivery

Note (scope of delivery, number and type)	Contact carrier SMF-SG is included in delivery with mounting plate and, if applicable, yellow backing plate
---	---

Pictures

Product picture (catalogue individual photo)



ID: khhs-f02

| 209.7 kB | .jpg | 352.778 x 352.778 mm - 1000 x 1000 px - 72 dpi

| 28.2 kB | .png | 74.083 x 74.083 mm - 210 x 210 px - 72 dpi

| 41.8 kB | .jpg | 123.472 x 123.472 mm - 350 x 350 px - 72 dpi

Schmersal India Pvt. Ltd., Plot No - G-7/1, Ranjangaon MIDC, Tal. - Shirur, Dist.- Pune 412 220

The details and data referred to have been carefully checked. Images may diverge from original. Further technical data can be found in the manual. Technical amendments and errors possible.

Generated on: 11/11/2024, 9:47 am