



DHS-150-BKBU-L

- for left hinged doors
- for robust doors and safety fences

Data

Ordering data

Product type description	DHS-150-BKBU-L
Article number (order number)	137000626
EAN (European Article Number)	8905236107610
eCl@ss number, version 12.0	27-27-26-06
eCl@ss number, version 11.0	27-27-26-06
eCl@ss number, version 9.0	27-27-26-06
ETIM number, version 7.0	EC001487
ETIM number, version 6.0	EC001487

General data

Housing coating material	painted
Material	Steel

Material of the operators	Plastic
Material of the mounting plate	steel
Material of the handle	Plastic
Gross weight	2,000 g

Mechanical data

Mechanical life, minimum	1,000,000 Operations
Door hinge	Left
Actuating force, minimum	50 N
Note (Actuating force)	The actuating force corresponds at least to the specified latching force of the solenoid interlock. Depending on the installation situation and the condition of the door, this can be higher.
Actuator mounted	Outside

Mechanical data - Dimensions

Length of the actuator	60 mm
Width of the actuator	194.2 mm
Height of the actuator	71.8 mm

Ambient conditions

Ambient temperature	-25 ... +55 °C
---------------------	----------------

Scope of delivery

Scope of delivery	Actuator must be ordered separately. The solenoid interlock is not included in delivery.
Scope of delivery of mounting material	2x Tamperproof screws with unidirectional slots

Note

Note (Emergency release)

Mounting only outside the guarded area

Pictures

Product picture (catalogue individual photo)



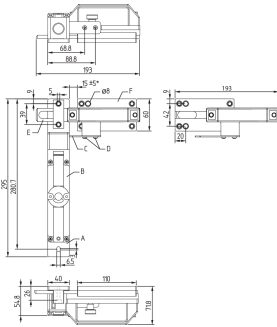
ID: kazm1f91

| 242.7 kB | .jpg | 352.778 x 401.108 mm - 1000 x 1137 px - 72 dpi

| 27.8 kB | .png | 73.731 x 83.961 mm - 209 x 238 px - 72 dpi

| 35.1 kB | .jpg | 108.656 x 123.472 mm - 308 x 350 px - 72 dpi

Dimensional drawing basic component



ID: kdhs1g01

| 148.6 kB | .jpg | 352.425 x 406.047 mm - 999 x 1151 px - 72 dpi

Product in the environment (application)



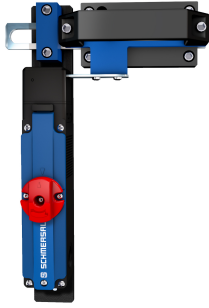
ID: dhs-150-AZM150-close

| 925.7 kB | .jpg | 162.56 x 121.92 mm - 1920 x 1440 px - 300 dpi

| 261.3 kB | .jpg | 352.778 x 264.583 mm - 1000 x 750 px - 72 dpi

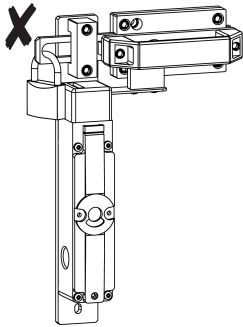
| 33.2 kB | .png | 74.083 x 55.739 mm - 210 x 158 px - 72 dpi

Sample application general



ID: dhs-150-AZM150-ohne-Profil
| 265.5 kB | .jpg | 352.425 x 512.939 mm - 999 x 1454 px - 72 dpi

Assembly example



ID: kdhs1a06
| 194.6 kB | .jpg | 352.778 x 476.603 mm - 1000 x 1351 px - 72 dpi

Schmersal Ltd., Sparrowhawk Close, WR14 1GL Malvern

The details and data referred to have been carefully checked. Images may diverge from original. Further technical data can be found in the manual. Technical amendments and errors possible.

Generated on: 11/11/2024, 07:00