

DESCRIPTION

TECHNICAL DATA SHEET FOR BW & CW
CABLE GLANDS, INCLUDING CABLE DETAILS.

QUALITY SYSTEM No:

DAV1673

SIGNED:

Alan

ISSUE
DATE:

21-09-1998

SHEET 2 of 5

★
DAVICO

MASTER

BRASS GLAND SELECTION CHART

THE GLAND SIZES AND RECOMMENDATIONS, INDICATED IN THE CHART BELOW, ARE BASED ON CABLES MANUFACTURED TO BS6346 (1997) AND THE APPROPRIATE NOMINAL DIAMETERS STATED.

600/1000V STRANDED COPPER CONDUCTORS PVC INSULATED WITH STEEL WIRE ARMOUR AND PVC SHEATHED OVERALL														
CABLE SIZE CONDUCTOR		NUMBER OF CORES												
NOM. AREA mm ²	NEUTRAL	1	2	3	3½	4	5	7	10	12	19	27	37	48
1.5	--	--	16	16	--	20S	20S	20S	20	20	25	25	32	32
2.5	--	--	20S	20S	--	20S	20S	20	25	25	25	32	32	40
4	--	--	20S	20	--	20	20	25	25	32	32	40		
6	--	--	20	20	--	20								
10	--	--	25	25	--	25								
16	--	--	25	25	--	25								
25	16	--	32	32	32	32								
			25	25										
35	16	--	32	32	32	40								
			25	32	32	32								
50	25	25	32	32	32	40								
70	35	25	32	40	40	40								
95	50	25	40	40	50S	50S								
120	70	32	40	50S	50	50								
150	70	32	50S	50	50	63S								
185	95	32	50	50	63S	63								
240	120	40	50	63S	63	75S								
300	150	40	63S	63	75S	75								
300	185	--	--	--	75	--								
400	185	50S	63	75S	90	90								
500	--	50	--	--	--	--								
630	--	50	--	--	--	--								
800	--	63S	--	--	--	--								
1000	--	63	--	--	--	--								

THIS SELECTION CHART IS INTENDED PURELY AS A GUIDE AND IT IS ADVISED THAT THE ACTUAL CABLE SIZES ARE CHECKED AGAINST THE GLAND DIMENSIONS. THIS BECOMES PARTICULARLY IMPORTANT WHERE SEALS ARE REQUIRED.
CABLE PARTICULARS IN THE SHADED AREAS INCORPORATE THE NEW CIRCULAR CONDUCTORS SHOWN IN BS6346 (1969) AMENDMENT NUMBER 3717 (OCTOBER 69).

DAVICO

Keeping electricity firmly in its place

Davico Industrial Limited, Charles Street, West Bromwich, West Midlands, B70 0AZ, U.K.
Tel: (0121) 520-7101/040, Fax: (0121) 520-7775 (SALES)/(0121) 520-0035 (ENQUIRES)
E-Mail sales: sales@davico.co.uk Enquiries: enq@davico.co.uk
World Wide Web: http://www.davico.co.uk

REV 1

DATE

SIG.

REV 2

DATE

SIG.

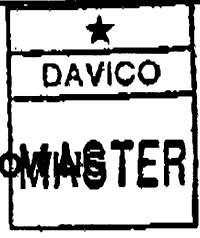
REV 3

DATE

SIG.

DESCRIPTION TECHNICAL DATA SHEET FOR BW & CW CABLE GLANDS, INCLUDING CABLE DETAILS.		QUALITY SYSTEM No: DAV1673
SIGNED: <i>Alan</i>	ISSUE DATE: 21-09-1998	SHEET 3 of 5


SELECTION OF CABLE GLANDS



IN ORDER TO ASSIST IN THE SELECTION OF A CABLE GLAND THE FOLLOWING DIRECTIVES, AS INDICATED IN BS6121 PART 1, NEED TO BE APPLIED.

- A) Select and identify the cable by British Standard number;
- B) Check the voltage rating, type and size of the cable;
- C) Check the actual size of the cable over the inner sheath;
- D) Check the actual size of the cable's overall diameter;
- E) Check the size and type of armour braiding if applicable;
- F) Check the environment conditions including enclosure to ensure that corrosion effects are covered;
- G) Check whether or not the installation is in a hazardous area;
- H) Check all accessories (i.e. Shrouds, Earth Tags, Locknuts, etc.).

CABLE TYPE		SINGLE WIRE ARMOUR (SWA)	
		CONDITIONS	NO SEAL
INDOORS	CLEAR & DRY	BW	CW
	EXTERNAL MOISTURE	--	CW
	INTERNAL MOISTURE	--	--
	DUST	--	CW
	OIL	--	CW
OUTDOORS	PROTECTED WITH SHROUD	--	CW
	EXPOSED	--	CW
	INTERNAL MOISTURE	--	--

 Keeping electricity firmly in its place	REV 1	DATE		SIG.
	REV 2	DATE		SIG.
	REV 3	DATE		SIG.

Davico Industrial Limited, Charles Street, West Bromwich, West Midlands, B70 0AZ, U.K.
 Tel: (0121) 520-7101/3040, Fax: (0121) 520-7775 (SALES)/(0121) 520-0036 (ENQUIRES)
 E-Mail: sales@davico.co.uk Enquiries: enq@davico.co.uk
 World Wide Web: http://www.davico.co.uk

DESCRIPTION

TECHNICAL DATA SHEET FOR BW & CW
CABLE GLANDS. INCLUDING CABLE DETAILS.

QUALITY SYSTEM No:

DAV1673

SIGNED:

Blaw

ISSUE
DATE:

21-09-1998

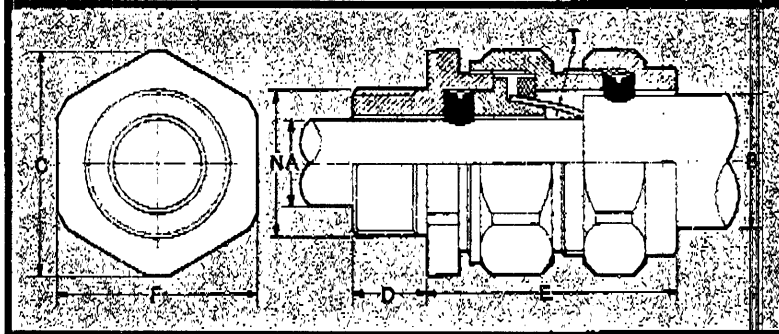
SHEET 5 of 5

CW TYPE GLANDS



DAVICO

MASTER



GLAND SIZE REF.	ENTRY THREAD		CABLE ACCEPTANCE DETAILS			HEXAGONAL DETAILS		ASSEM- -BLED LENGTH 'E'
	DIA. 'N'	LENGTH 'D'	DIA. 'A' MIN. MAX.	DIA. 'B' MIN. MAX.	ARMOUR WIRE SIZE 'T'	A / F 'F'	A / C 'C'	
CW-16L	16	10	3.5 - 9.0	8.4 - 13.8	0.90	22.0	24.4	38.0
CW-20S	20	10	8.0 - 11.8	12.9 - 15.8	0.90/1.25	24.0	26.6	40.0
CW-20L	20	10	11.0 - 13.8	15.5 - 20.8	0.90/1.25	30.0	33.3	41.0
CW-25L	25	10	13.0 - 19.8	20.3 - 27.5	1.25/1.60	36.0	39.9	44.0
CW-32L	32	10	19.0 - 26.4	26.7 - 33.5	1.60/2.00	46.0	51.0	48.0
CW-40L	40	15	25.0 - 32.4	33.0 - 40.9	1.60/2.00	55.0	61.0	52.0
CW-50S	50	15	31.5 - 38.0	39.4 - 46.3	2.00/2.50	60.0	66.5	55.0
CW-50L	50	15	36.5 - 44.0	45.7 - 52.6	2.00/2.50	65.0	72.0	55.0
CW-63S	63	15	42.5 - 49.0	52.1 - 61.5	2.50	75.0	83.2	60.0
CW-63L	63	15	48.5 - 55.5	58.4 - 65.3	2.50	80.0	88.7	60.0
CW-75S	75	20	54.5 - 62.0	64.8 - 73.0	2.50	90.0	100.0	65.0
CW-75L	75	20	60.5 - 67.0	71.0 - 78.0	2.50	95.0	105.4	65.0
CW-90L	90	20	66.0 - 79.0	77.0 - 90.0	2.50/3.15	110.0	122.0	70.0

APPLICATION

OUTDOOR OR INDOOR REQUIREMENT FOR ALL SWA APPLICATIONS
PROVIDES FOR ARMOUR CLAMP AND SEAL ON OUTER SHEATH OF CABLE.

DAVICO

Keeping electricity firmly in its place

Davico Industrial Limited, Charles Street, West Bromwich, West Midlands, B70 0AZ, U.K.
Tel: (0121) 520-710 / 7040, Fax: (0121) 520-775 (SALES) / (0121) 520-0038 (ENQUIRES)
E-Mail sales: sales@davico.co.uk Enquiries: enq@davico.co.uk
World Wide Web: http://www.davico.co.uk

REV
1

DATE

SIG.

REV
2

DATE

SIG.

REV
3

DATE

SIG.