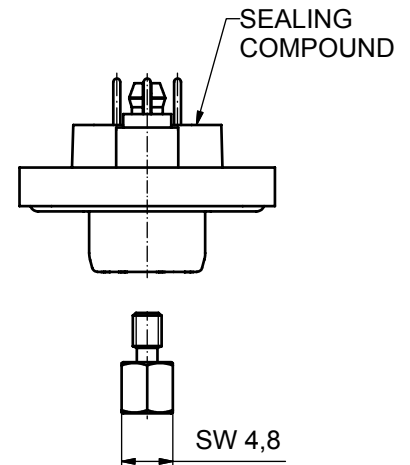
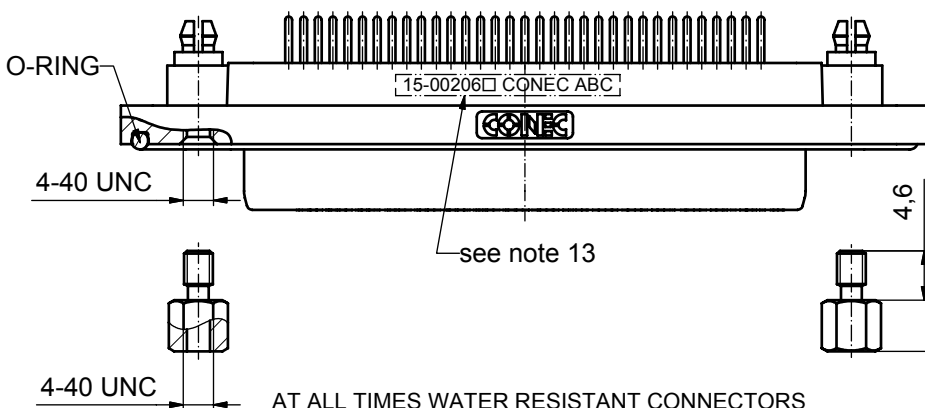
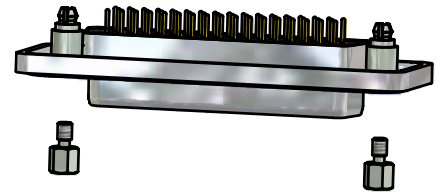
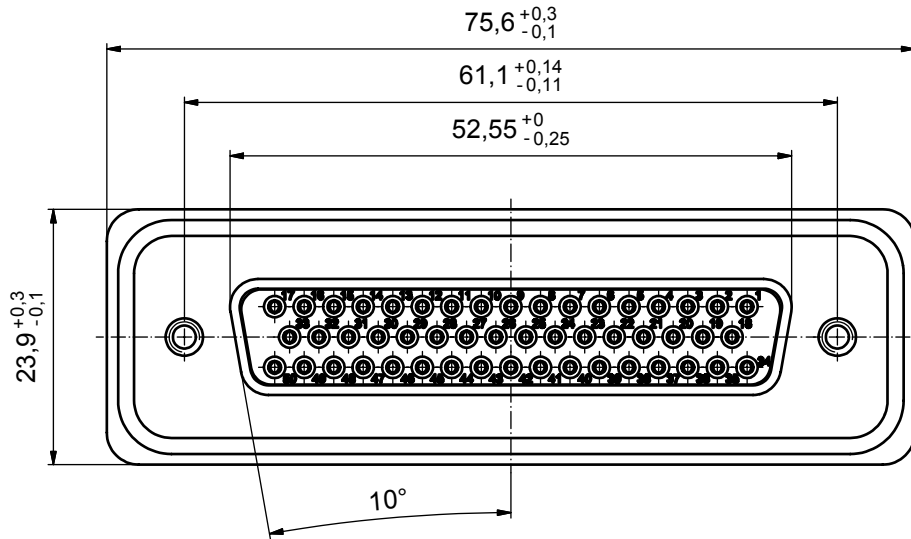
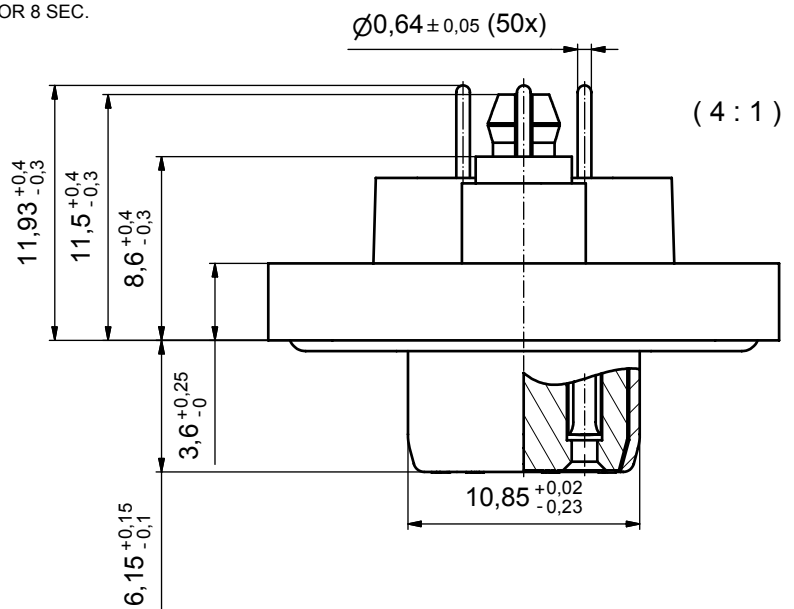


NOTES:

- FOR WAVESOLDERING (SOLDER BATH TEMPERATURE 265°C FOR 8 SEC. AND SOLDER PREHEAT 150°C FOR 180 SEC.)
- IP RATING: IP 67
- SEALED TO WITHSTAND PRESSURE UP TO 1,45 PSI FOR 30 MINUTES AFTER HIGH TEMPERATURE EXPOSURE
- METALSHELL: ZINC DIE CAST; min. 50µin NICKEL PLATING over COPPER
- INSULATORS: PBT GF UL 94 V-0, BLACK
- O-RING: SILICONE PER ASTM D2000 70 SHORE A
- SEALING COMPOUND: EPOXY RESIN UL 94 V-0; BLACK
- CONTACTS: COPPER ALLOY  
PLATING (SEE PART NO):  
 PLEASE ADD 1 for 30µin HARD GOLD over min. 50µin NICKEL  
 PLEASE ADD 3 for 8µin HARD GOLD over min. 50µin NICKEL
- REAR SPACER CLIPS: COPPER ALLOY; min. 200µin TIN over 80µin NICKEL  
PCB-HOLE:  $\varnothing 3,1 \pm 0,1$ ; PCB THICKNESS 1,6mm
- HEXLOCKING SCREWS: STAINLESS STEEL
- PCB-HOLE DRILLINGS and RECOMMENDED PANEL CUT-OUT ON SHEET 2
- RECOMMENDED TORQUE FOR MOUNTING SCREW 35Ncm (3.1 in.LB) / max.67Ncm (6 in.LB)
- CONNECTOR IS PART MARKED: **15-00206** CONEC ABC



AT ALL TIMES WATER RESISTANT CONNECTORS NOT IN USE SHOULD BE COVERED WITH A CONEC WATER RESISTANT CAP OR WATER TIGHT HOOD.

Directive 2002/95/EC  
"RoHS"  
Compliant

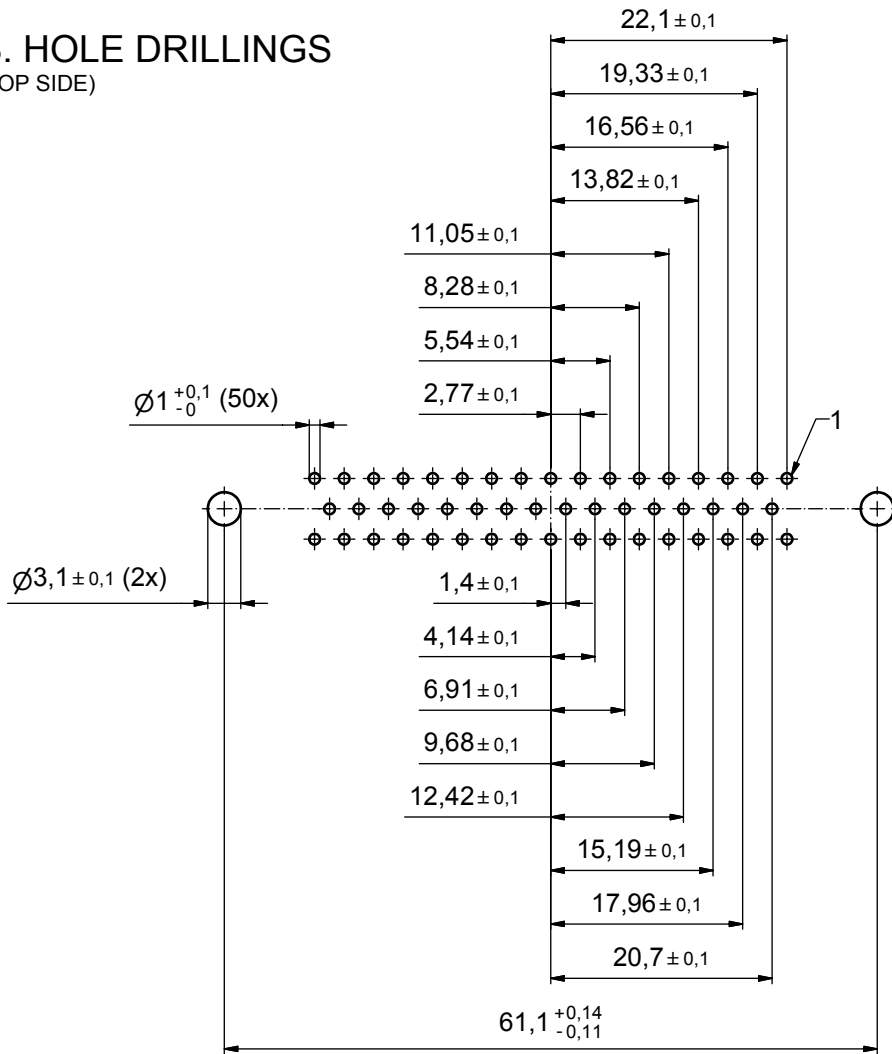
|   |        |
|---|--------|
| APPROVAL # FREIGABE # DEBLOCAGE # AUTORIZACION # APPROVAL |        |
| CUSTOMER APPROVAL DATE:                                   |        |
| NAME:   | TITLE: |
| COMPANY NAME:   |        |
| APPROVAL # FREIGABE # DEBLOCAGE # AUTORIZACION # APPROVAL |        |

|  |             |      |      |           |          |            |  |              |
|--|-------------|------|------|-----------|----------|------------|--|--------------|
| THIS DRAWING MAY NOT BE COPIED OR REPRODUCED IN ANY WAY, AND MAY NOT BE PASSED ON TO A THIRD PARTY WITHOUT WRITTEN PERMISSION. OWNERSHIP AND COPYRIGHT OF CONEC GmbH |             |      |      | tolerance |          | dim. in mm | scale: 2:1 (5:1)                           |              |
| DO NOT ALTER CAD DRAWING BY HAND   |             |      |      | date      | name     |            | material: see notes                        |              |
| rev.   | description | date | name | drawn     | 05.11.09 | Petker     | title: D-SUB FEMALE                        |              |
|  |             |      |      | appd.     | 06.11.09 | Fischer    | 50pos. SOLDER PIN STRAIGHT                 |              |
|  |             |      |      | norm      |          |            | with rear spacer clip and hexlocking screw |              |
|  |             |      |      | d-old     |          |            | dwg no: Inventor 10                        | DIN-A3       |
|  |             |      |      |           |          |            | 15K1A493                                   | sh: 1        |
|  |             |      |      |           |          |            | part no: 15-00206                          | (see note 8) |

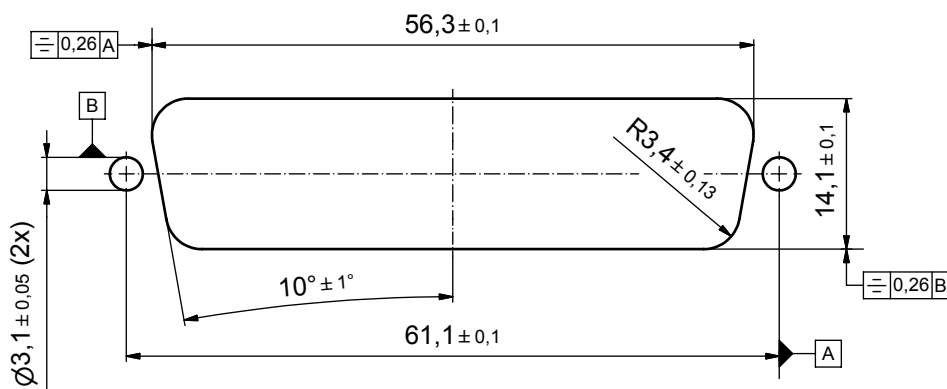


# P.C.B. HOLE DRILLINGS

(P.C.B. TOP SIDE)



## RECOMMENDED PANEL CUT-OUT



|   |        |
|---|--------|
| APPROVAL # FREIGABE # DEBLOCAGE # AUTORIZACION # APPROVAL |        |
| CUSTOMER APPROVAL DATE:                                   |        |
| NAME:   | TITLE: |
| COMPANY NAME:   |        |
| APPROVAL # FREIGABE # DEBLOCAGE # AUTORIZACION # APPROVAL |        |

| THIS DRAWING MAY NOT BE COPIED OR REPRODUCED IN ANY WAY, AND MAY NOT BE PASSED ON TO A THIRD PARTY WITHOUT WRITTEN PERMISSION. OWNERSHIP AND COPYRIGHT OF CONEC GmbH |             |      |      | tolerance |      | dim. in mm |
|--|-------------|------|------|-----------|------|------------|
| DO NOT ALTER CAD DRAWING BY HAND   |             |      |      | date      | name |            |
| drawn  | 05.11.09    |      |      | Petker    |      |            |
| appd.  | 06.11.09    |      |      | Fischer   |      |            |
| norm   |             |      |      |           |      |            |
| d-old  |             |      |      |           |      |            |
| a  | Origin      |      |      |           |      |            |
| rev.   | description | date | name |           |      |            |
|  |             |      |      |           |      |            |

|           |   |        |
|-----------|---|--------|
| scale:    | 2:1   |        |
| material: | see sheet1  |        |
| title:    | <b>P.C.B HOLE DRILLINGS</b><br>PANEL CUT-OUT<br>D-SUB Male 50pos. Solder pin straight |        |
| dwg no:   | Inventor 10   | DIN-A3 |
|           | 15K1A493  | sh: 2  |
| part no:  | see sheet 1   |        |