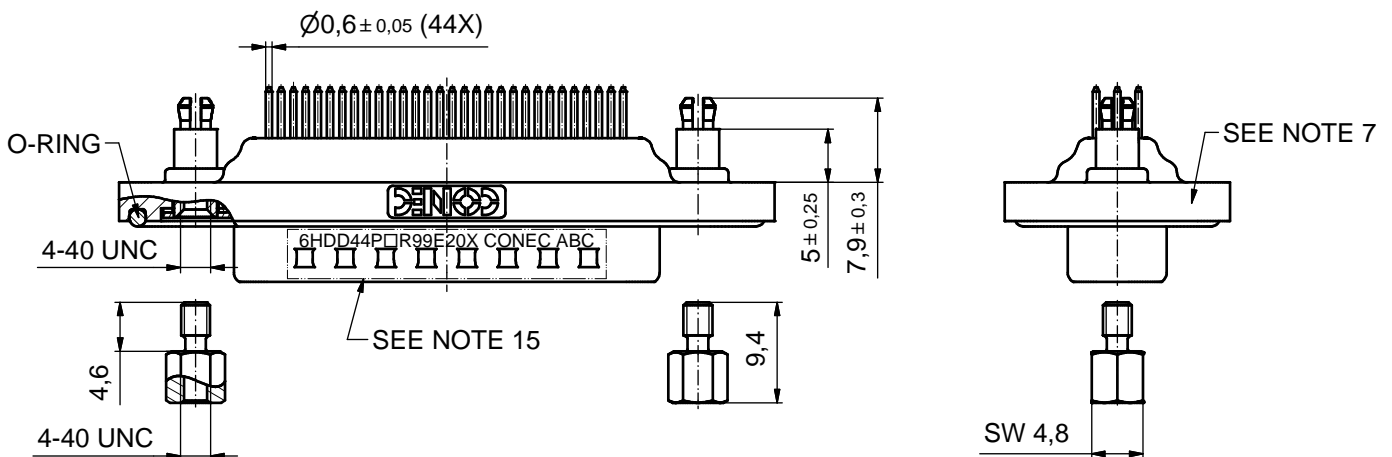
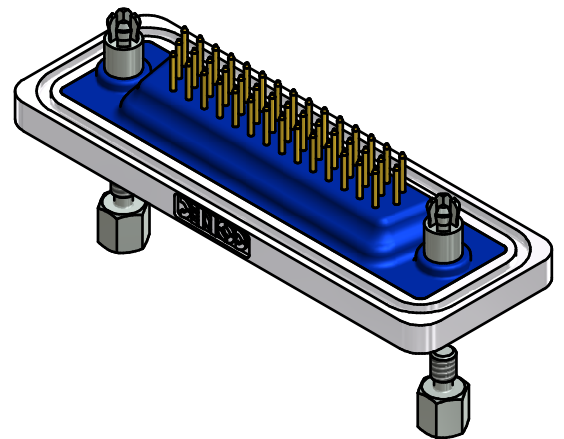
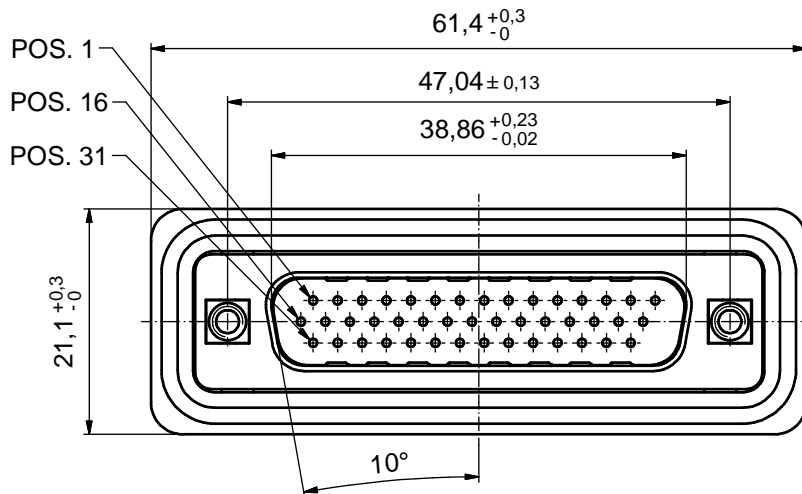
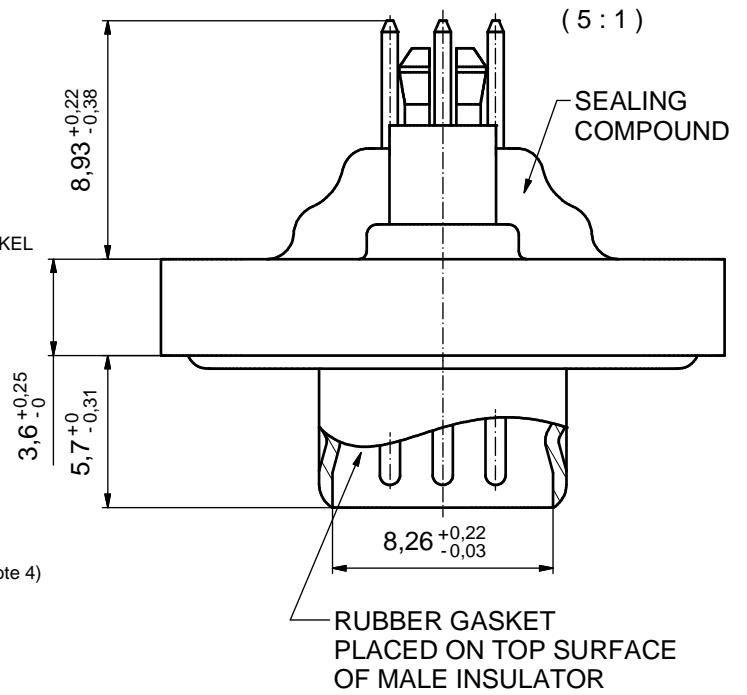


NOTES:

- FOR WAVESOLDERING (SOLDER BATH TEMPERATURE 240°C FOR 5 SEC. AND SOLDER PREHEAT 120°C FOR 120 SEC.)
- METAL SHELLS: COPPER ALLOY; min. 315µm TIN over 40-80µm NICKEL
- INSULATORS: PBT GF UL 94 V-0; BLACK
- CONTACTS: COPPER ALLOY; PLATING (SEE PART NO):
 - PLEASE ADD A for GOLD FLASH over NICKEL (PREFERRED TYPE)
 - PLEASE ADD B for 20µm HARD GOLD over min. 50µm NICKEL
 - PLEASE ADD C for 30µm HARD GOLD over min. 50µm NICKEL
- THREADED SPACER CLIPS: COPPER ALLOY; min. 200µm TIN over 80µm NICKEL
PCB-HOLE: $\varnothing 3,1 \pm 0,1$; PCB THICKNESS 1,6mm
- COLLARS: COPPER ALLOY, min. 200µm TIN over 80µm NICKEL
- FRAME: ZINC DIE CAST; NICKEL PLATED
- O-RING: SILICON; BLUE
- RUBBER GASKET: TPE
- SEALING COMPOUND: PUR; BLUE
- HEXLOCKING SCREWS: STAINLESS STEEL
- P.C.B. HOLE DRILLINGS + RECOMMENDED PANEL CUT-OUT ON SHEET 2
- RECOMMENDED TORQUE FOR MOUNTING SCREW
35Ncm (3,1 in.LB) / max. 40Ncm (3,5 in.LB)
- CONNECTOR IS PART MARKED: $\boxed{6HDD44PQR99E20X \text{ CONEC } ABC}$ (see note 4)

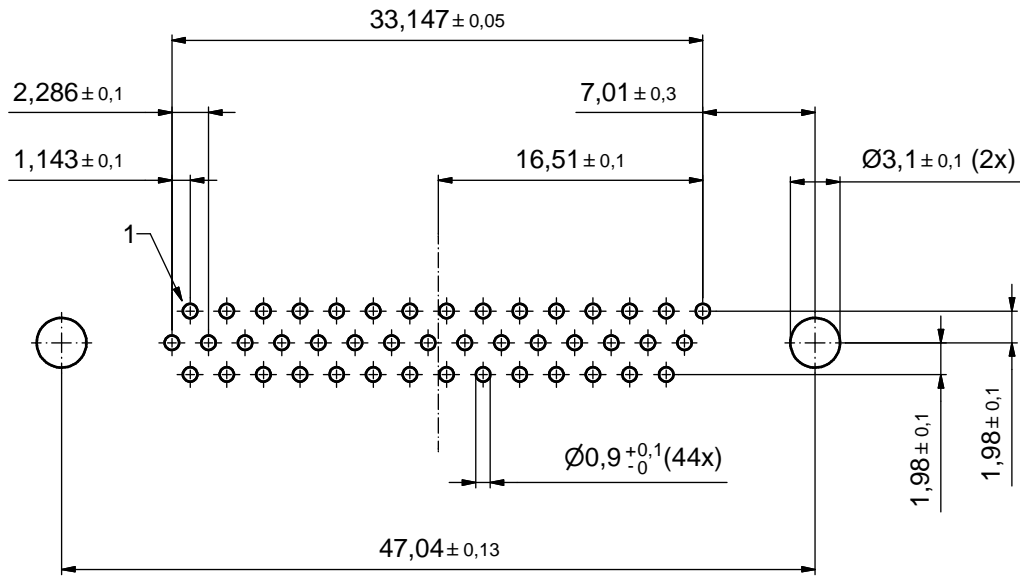


AT ALL TIMES WATER RESISTANT CONNECTORS NOT IN USE SHOULD BE COVERED WITH A CONEC WATER RESISTANT CAP OR WATER TIGHT HOOD.

Directive 2002/95/EC RoHS compliant

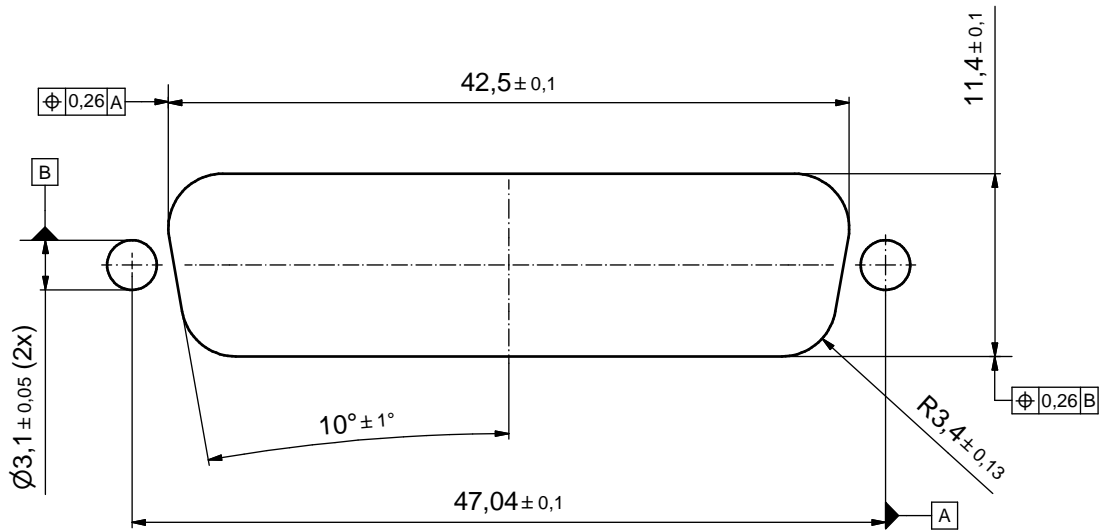
THIS DRAWING MAY NOT BE COPIED OR REPRODUCED IN ANY WAY, AND MAY NOT BE PASSED ON TO A THIRD PARTY WITHOUT WRITTEN PERMISSION. OWNERSHIP AND COPYRIGHT OF CONEC GmbH DO NOT ALTER CAD DRAWING BY HAND					tolerance		scale: 2:1 (5:1)	
						dim. in mm	material: SEE NOTES	
					date	name	title: D-SUB HD MALE 44pos. SOLDER PIN STRAIGHT with threaded spacer clip and hexlocking screw	
					drawn	23.07.12		Schmidt
					appd.	23.07.12		Koch
					norm			dwg no: 15K1A1085 (b)
					d-old	18K1A470		
1 x b	A4386	23.07.12	HS				DIN-A3	
a	Original						sh: 1	
rev.	description	date	name	part no: 6HDD44PQR99E20X (see note 4)				

P.C.B. HOLE DRILLINGS
(P.C.B. TOP SIDE)



RECOMMENDED PANEL CUT-OUT

(b)



THIS DRAWING MAY NOT BE COPIED OR REPRODUCED IN ANY WAY, AND MAY NOT BE PASSED ON TO A THIRD PARTY WITHOUT WRITTEN PERMISSION. OWNERSHIP AND COPYRIGHT OF CONEC GmbH DO NOT ALTER CAD DRAWING BY HAND					tolerance		scale: 3:1
					date	name	material: SEE SHEET 1
					drawn	23.07.12 Schmidt	title: P.C.B. HOLE DRILLINGS RECOMMENDED PANEL CUT-OUT D-SUB HD MALE 44pos.
					appd.	23.07.12 Koch	
					norm		
				d-old	18K1A470	dwg no:	
1 x b	Ä4386	23.07.12	HS				DIN-A3
a	Original						part no: 15K1A1085
rev.	description	date	name	part no: SEE SHEET 1			