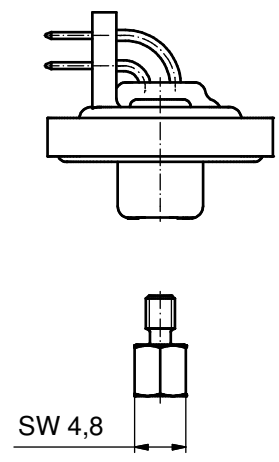
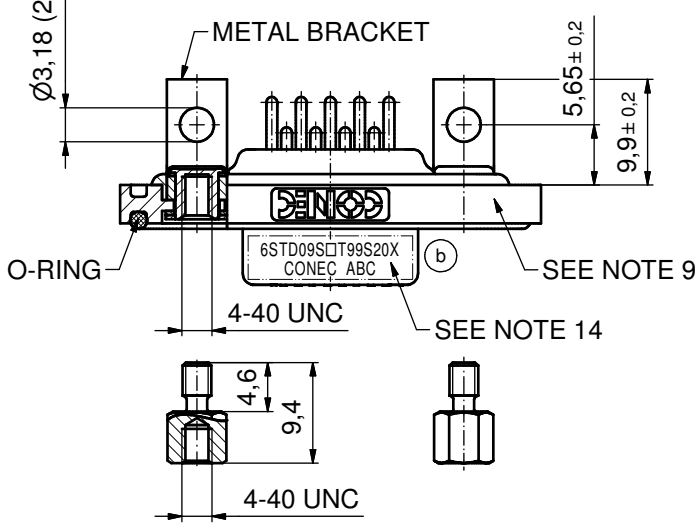
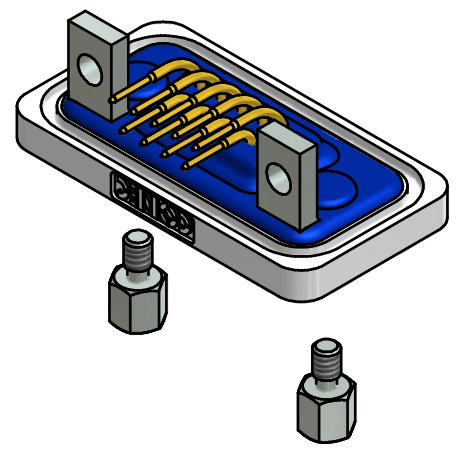
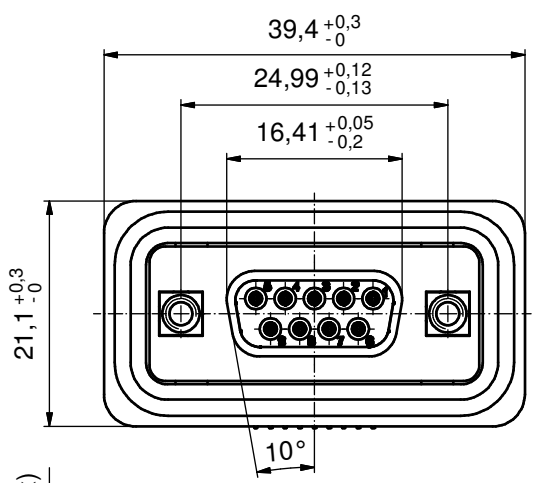
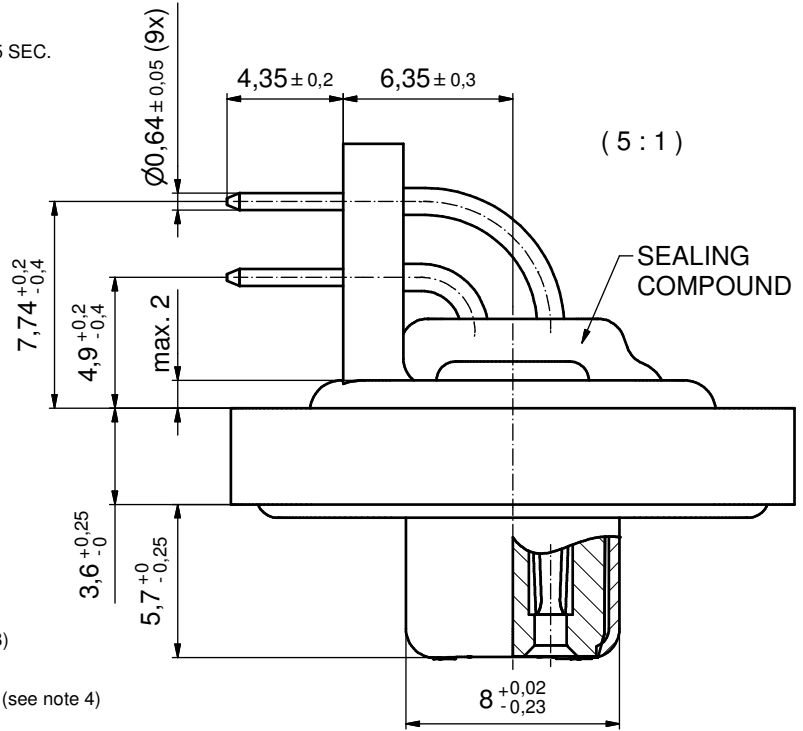


NOTES:

1. FOR WAVESOLDERING (SOLDER BATH TEMPERATURE 240°C FOR 5 SEC. AND SOLDER PREHEAT 120°C FOR 120 SEC.)
2. METAL SHELLS: COPPER ALLOY;
min. 315µm TIN over 40-80µm NICKEL
3. INSULATORS: PBT GF UL 94 V-0; BLACK
4. CONTACTS: COPPER ALLOY; PLATING (SEE PART NO):
 (b) PLEASE ADD A for GOLD FLASH over NICKEL (PREFERRED TYPE)
 PLEASE ADD B for 20µm HARD GOLD over min. 50µm NICKEL
 PLEASE ADD C for 30µm HARD GOLD over min. 50µm NICKEL
5. THREADED INSERTS: COPPER ALLOY;
min 200µm TIN over 80µm NICKEL
6. COLLARS: COPPER ALLOY; NICKEL PLATED
7. METAL BRACKETS: ZINC DIE CAST;
300µm COPPER/40-120µm NICKEL/120-200µm TIN
8. HEXLOCKING SCREWS: STAINLESS STEEL
9. FRAME: ZINC DIE CAST; NICKEL PLATED
10. O-RING: SILICON; BLUE
11. SEALING COMPOUND: PUR; BLUE
12. P.C.B. HOLE DRILLINGS AND RECOMMENDED PANEL CUT-OUT ON SHEET 2
13. RECOMMENDED TORQUE FOR MOUNTING SCREW 35N cm (3.1 in.LB) / max. 40N cm (3,5 in.LB)
14. CONNECTOR IS PART MARKED: 6STD09S□T99S20X CONEC ABC (see note 4)

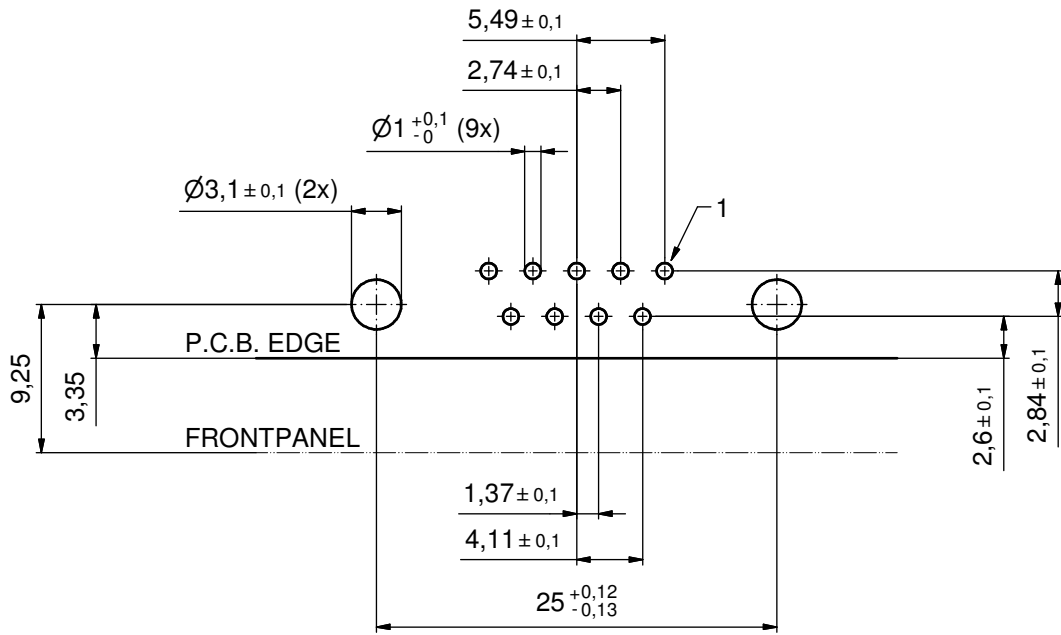


AT ALL TIMES WATER RESISTANT CONNECTORS NOT IN USE SHOULD BE COVERED WITH A CONEC WATER RESISTANT CAP OR WATER TIGHT HOOD.

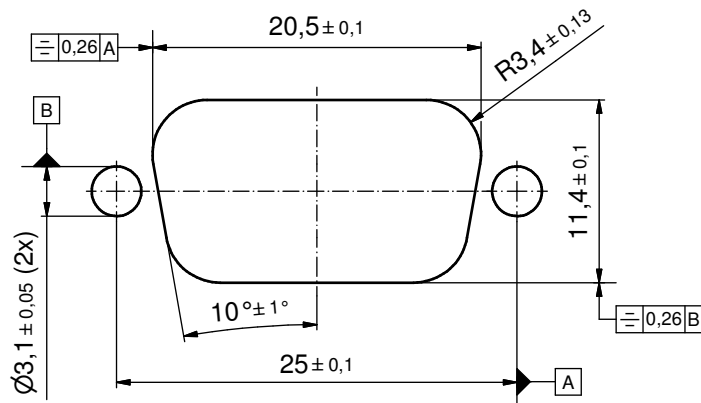
Directive 2002/95/EC RoHS compliant

THIS DRAWING MAY NOT BE COPIED OR REPRODUCED IN ANY WAY, AND MAY NOT BE PASSED ON TO A THIRD PARTY WITHOUT WRITTEN PERMISSION. OWNERSHIP AND COPYRIGHT OF CONEC GmbH DO NOT ALTER CAD DRAWING BY HAND	tolerance		dim. in mm	scale: 2:1 (5:1)		
				material: SEE NOTES		
			date	name		title: D-SUB FEMALE 90° 9pos. SOLDER PIN ANGLED with threaded insert, metal bracket, hexlocking screw
			drawn	15.11.10 Lehmenkühler		
		appd.	16.11.10 Fischer			
		norm			dwg no: 15K1A751 DIN-A3 sh: 1/2	
		d-old				
2 x b	A4819	02.07.2013	K.H.			
a	Original					
rev.	description	date	name	part no: 6STD09S□T99S20X (see note 4)		

P.C.B. HOLE DRILLINGS
(P.C.B. TOP SIDE)



RECOMMENDED PANEL CUT-OUT



THIS DRAWING MAY NOT BE COPIED OR REPRODUCED IN ANY WAY, AND MAY NOT BE PASSED ON TO A THIRD PARTY WITHOUT WRITTEN PERMISSION. OWNERSHIP AND COPYRIGHT OF CONEC GmbH DO NOT ALTER CAD DRAWING BY HAND				tolerance		scale: 2:1
				date	name	material: SEE SHEET 1
				drawn	15.11.10	Lehmenkühler
				appd.	16.11.10	Fischer
				norm		
			d-old			
2 x b	Ä4819	02.07.2013	K.H.	title: P.C.B. HOLE DRILLINGS D-SUB FEMALE 90° 9pos. SOLDER PIN ANGLED with threaded insert, metal bracket, hexlocking screw		
a	Original					
			CONEC ®		dwg no: 15K1A751	
rev.	description	date			name	part no: SEE SHET 1
					DIN-A3 sh: 2/2	