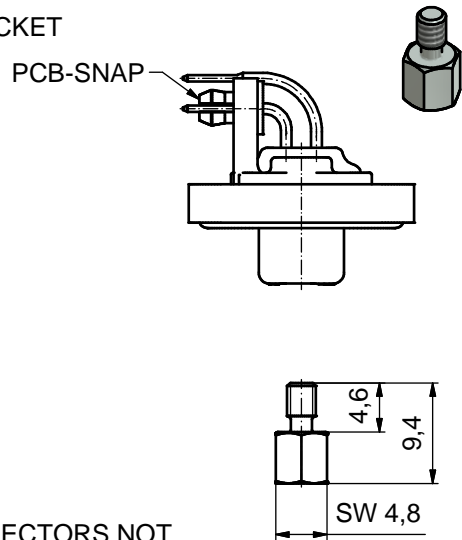
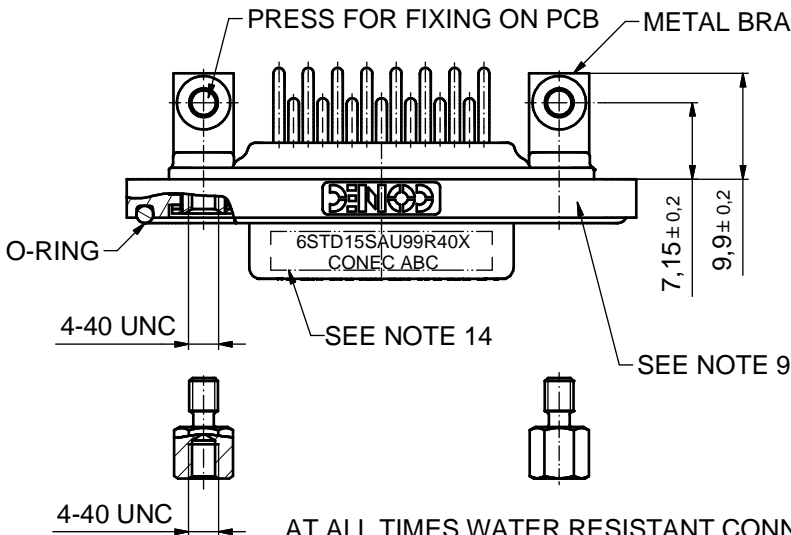
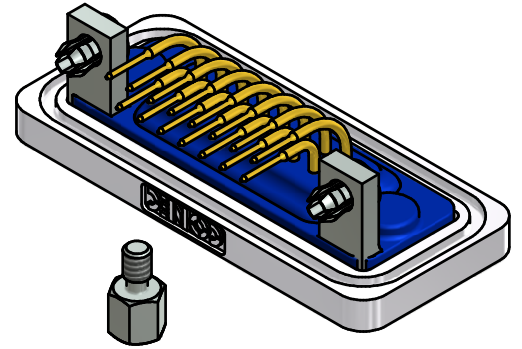
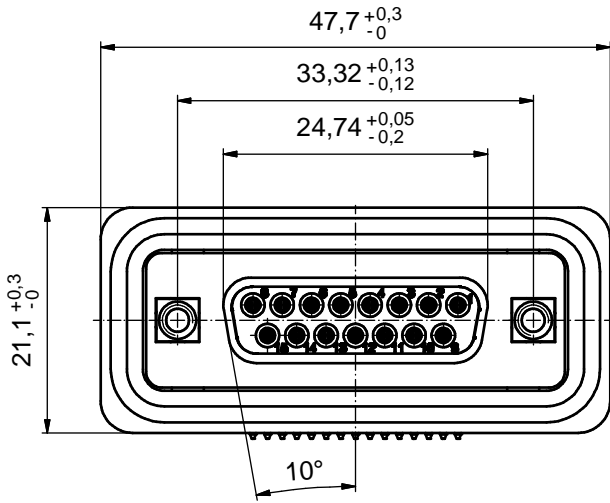
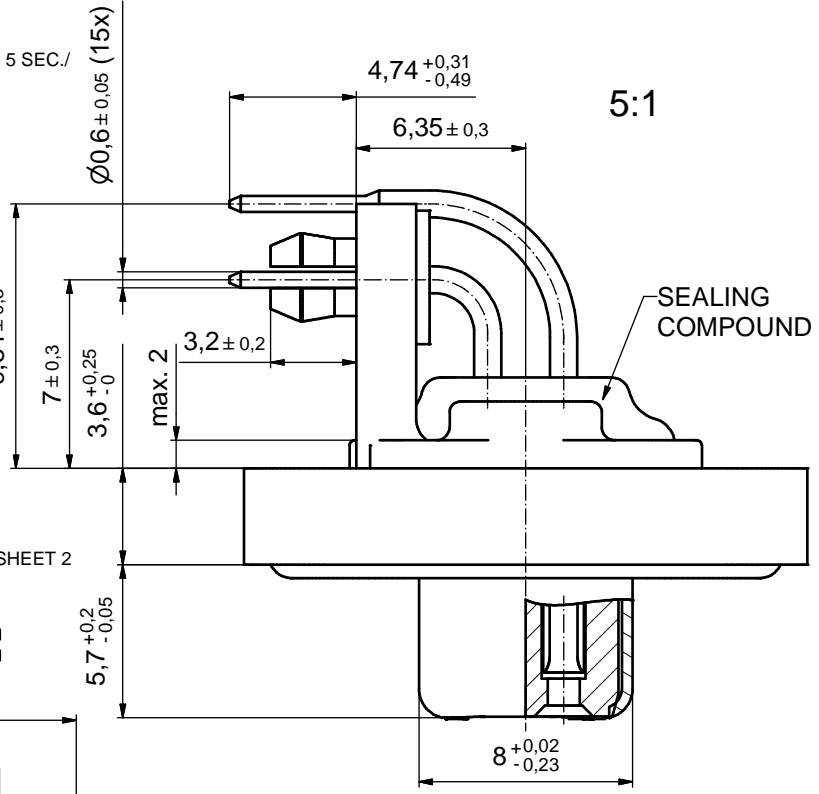


**NOTES:**

1. FOR WAVESOLDERING ( SOLDER BATH TEMPERATURE 240°C FOR 5 SEC./ AND SOLDER PREHEAT 120°C FOR 120 SEC. )
2. METALSHELLS: COPPER ALLOY;  
min. 315µin TIN over 40-80µin NICKEL
3. INSULATORS: PBT GF UL 94 V-0, BLACK
4. CONTACTS: COPPER ALLOY  
PLATING: GOLD FLASH over NICKEL
5. THREADED INSERTS: COPPER ALLOY;  
min. 200µin TIN over 80µin NICKEL
6. METAL BRACKETS: ZINC DIE CAST;  
300µin COPPER/ 40-120µin NICKEL/ 120-200µin TIN
7. PCB-SNAPS: COPPER ALLOY; min. 200µin TIN over 80µin NICKEL  
PCB-HOLE:  $\varnothing 3,1 \pm 0,1$ mm; PCB-THICKNESS: 1,6mm
8. HEXLOCKING SCREWS: STAINLESS STEEL
9. FRAME: ZINC DIE CAST; NICKEL PLATED
10. O-RING: SILICON; BLUE
11. SEALING COMPOUND: PUR; BLUE
12. P.C.B. HOLE DRILLINGS and RECOMMENDED PANEL CUT-OUT ON SHEET 2
13. RECOMMENDED TORQUE FOR MOUNTING SCREW  
35Ncm (3,1in.LB)/max. 40Ncm (3,5 in.LB)
14. CONNECTOR IS PART MARKED: 6STD15SAU99R40X CONEC ABC

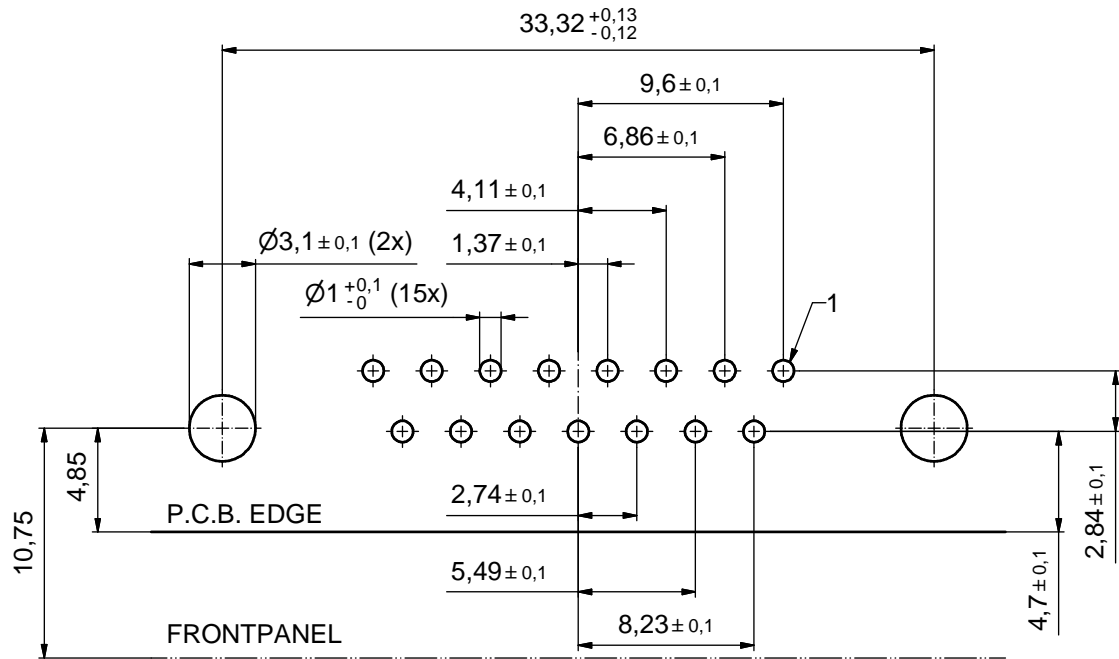


AT ALL TIMES WATER RESISTANT CONNECTORS NOT IN USE SHOULD BE COVERED WITH A CONEC WATER RESISTANT CAP OR WATER TIGHT HOOD.

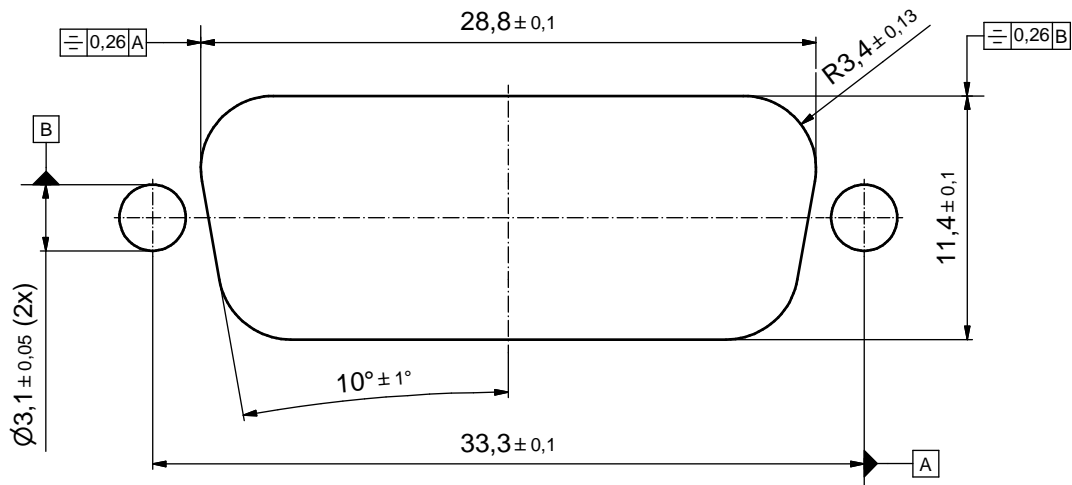
Directive 2002/95/EC RoHS compliant

THIS DRAWING MAY NOT BE COPIED OR REPRODUCED IN ANY WAY, AND MAY NOT BE PASSED ON TO A THIRD PARTY WITHOUT WRITTEN PERMISSION. OWNERSHIP AND COPYRIGHT OF CONEC GmbH DO NOT ALTER CAD DRAWING BY HAND	tolerance		dim. in mm		scale:	2:1 (5:1)	
					material:	SEE NOTES	
	date	name	title:				
	drawn 13.08.2014	Heinrich	D-SUB FEMALE 90°				
	appd. 13.08.2014	Lehmenkühler	15pos. SOLDER PIN ANGLED				
	norm		with threaded insert and metal bracket and snap				
	d-old		dwg no:				
a	Original	<b>CONEC</b>			15K1A1529		DIN-A3
rev.	description				part no: 6STD15SAU99R40X		sh: 1

P.C.B. HOLE DRILLINGS  
(P.C.B. TOP SIDE)



RECOMMENDED PANEL CUT-OUT



THIS DRAWING MAY NOT BE COPIED OR REPRODUCED IN ANY WAY, AND MAY NOT BE PASSED ON TO A THIRD PARTY WITHOUT WRITTEN PERMISSION. OWNERSHIP AND COPYRIGHT OF CONEC GmbH DO NOT ALTER CAD DRAWING BY HAND				tolerance		scale: 4:1
				date	name	material: SEE SHEET 1
				drawn	13.08.2014	Heinrich
				appd.	13.08.2014	Lehmenkühler
				norm		
			d-old			
			rev.	a	Original	title: P.C.B. HOLE DRILLINGS RECOMMENDED PANEL CUT-OUT D-SUB FEMALE 15pos. SOLDER PIN ANGLED
			description			dwg no: 15K1A1529
			date			DIN-A3
			name			sh: 2
			<b>CONEC</b> <sup>®</sup>			part no: SEE SHEET 1